

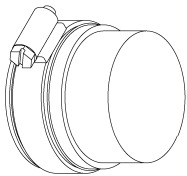
NEW

EZ Flex ProSeal Push Joint Connectors

EZ Flex ProSeal Push Joint Technology is Easier to Install 1-1/2" & 1-1/4" Tubular Traps Less Time and Cleaner Under Sinks & Lavs For The Modern-Day Plumber and It's Approved. No Trap adapters, Primer or Solvent Cement used.



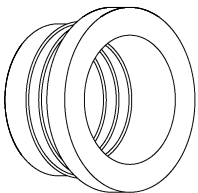
Part Nos. When used for 1-1/2" DWV copper Part number is P153470-Cap-C
P15470-Cap



When used to cap off 1-1/2" PVC Stub-out used Part No. P15470 Cap

P1515

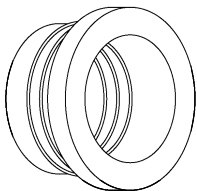
When used for DWV Copper Part No. is P1515-C



EZ Flex ProSeal Push Joint to connect 1-1/2" PVC pipe to 1-1/2" Tubular

P1514

When used for 1-1/2" DWV copper to 1-1/4" tubular Use part # P1514-C



EZ Flex ProSeal Push Joint to connect 1-1/2" PVC pipe to 1-1/4" Tubular.



Call ProVent for your area Wholesaler's name for your discount

ProVent Systems, Inc ■ 1355 Capital Circle ■ Lawrenceville, GA ■ 30043 ■ Phone ■ 800-262-5355

EZ-Flex ProSeal 1-1/2" PVC Cap

ProVent™ ProSeal Price List

The 1-1/2" PVC Stub-out should be cut off approximately 3/4" outside the drywall or cabinet wall in order to fit inside the hub of the test cap. Make sure the stainless steel band is on the top of the cap making it easier for the drywall cut out hole. Tighten up the stainless steel band no more than 60 inch pounds torque on the band. Maximum test at a 20 foot head pressure to prevent any blow offs. Test cap is reusable

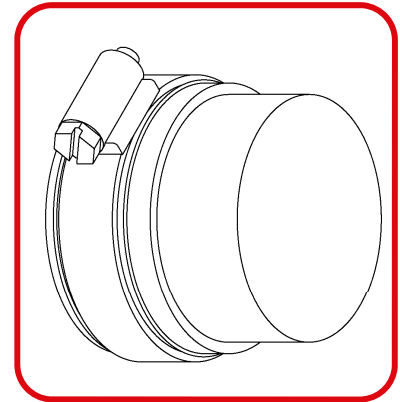
Carton Quantity

25

List Price

\$ 5.50 ea.

P15470 CAP



EZ-Flex ProSeal Push Joint 1-1/2" PVC Pipe to 1-1/2" to 1-1/2" Tubular

Insert the tubular P-Trap before inserting the Push Joint to obtain the cut-off measurement for the trap. Insert the P1515 ProSeal push joint inside the stub-out pipe with the stop pressed against the pipe wall. Make sure the inserted 1-1/2" tubular pipe does not have any cutting burrs on it to tear the inside of the flexible material.

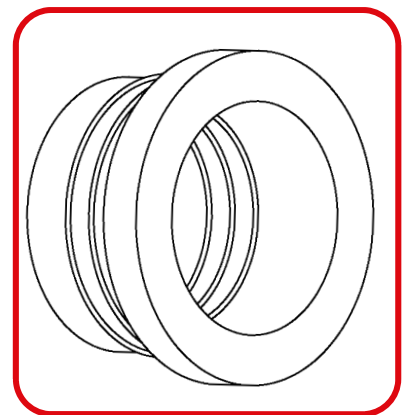
Carton Quantity

50

List Price

\$ 3.10 ea.

P1515



EZ-Flex ProSeal Push Joint 1-1/2" PVC Pipe to 1-1/2" to 1-1/4" Tubular

Insert the tubular P-Trap before inserting the Push Joint to obtain the cut-off measurement for the trap. Insert the P1514 ProSeal push joint inside the 1-1/2" PVC stub-out with the stop against the PVC pipe wall. Insert the 1-1/4" tubular P-Trap into the inside of the push joint, Make sure the push joint is secure around the PVC and tubular inserted pipe.

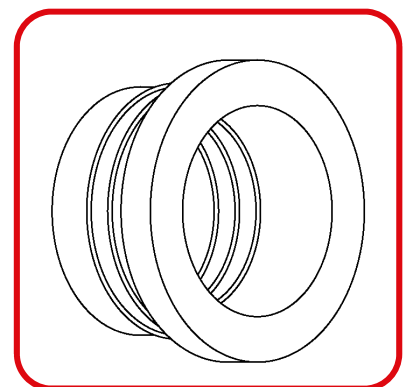
Carton Quantity

50

List Price

\$ 3.10 ea.

P1514



Prices are the same for PVC or DWV copper.

LIMITED PARTS WARRANTY

Sellers products are carefully inspected for manufacturing defects; however, it is not always possible to detect hidden defects. Said products are warranted only to the extent that seller will replace without charge, products proved to have manufacturing defects within 6 months of the date of delivery thereof and provided seller has been given an opportunity to inspect the product alleged to be defective and the installation or use thereof. NO WARRANTY IS INCLUDED AGAINST ANY EXPENSE FOR REMOVAL, REINSTALLATION OR OTHER CONSEQUENTIAL DAMAGES ARISING FROM ANY DEFECT. THE WARRANTIES SET OUT ABOVE ARE THE ONLY WARRANTIES MADE BY SELLER AND ARE EXPRESSLY IN LIEU OF ALL OTHER WARRANTIES, EXPRESSED OR IMPLIED, INCLUDING THE WARRANTIES OR MERCHANTABILITY AND FITNESS FOR A PARTICULAR PROPOSE.