

FIRESTOP SYSTEMS

ProSet Systems, Inc.

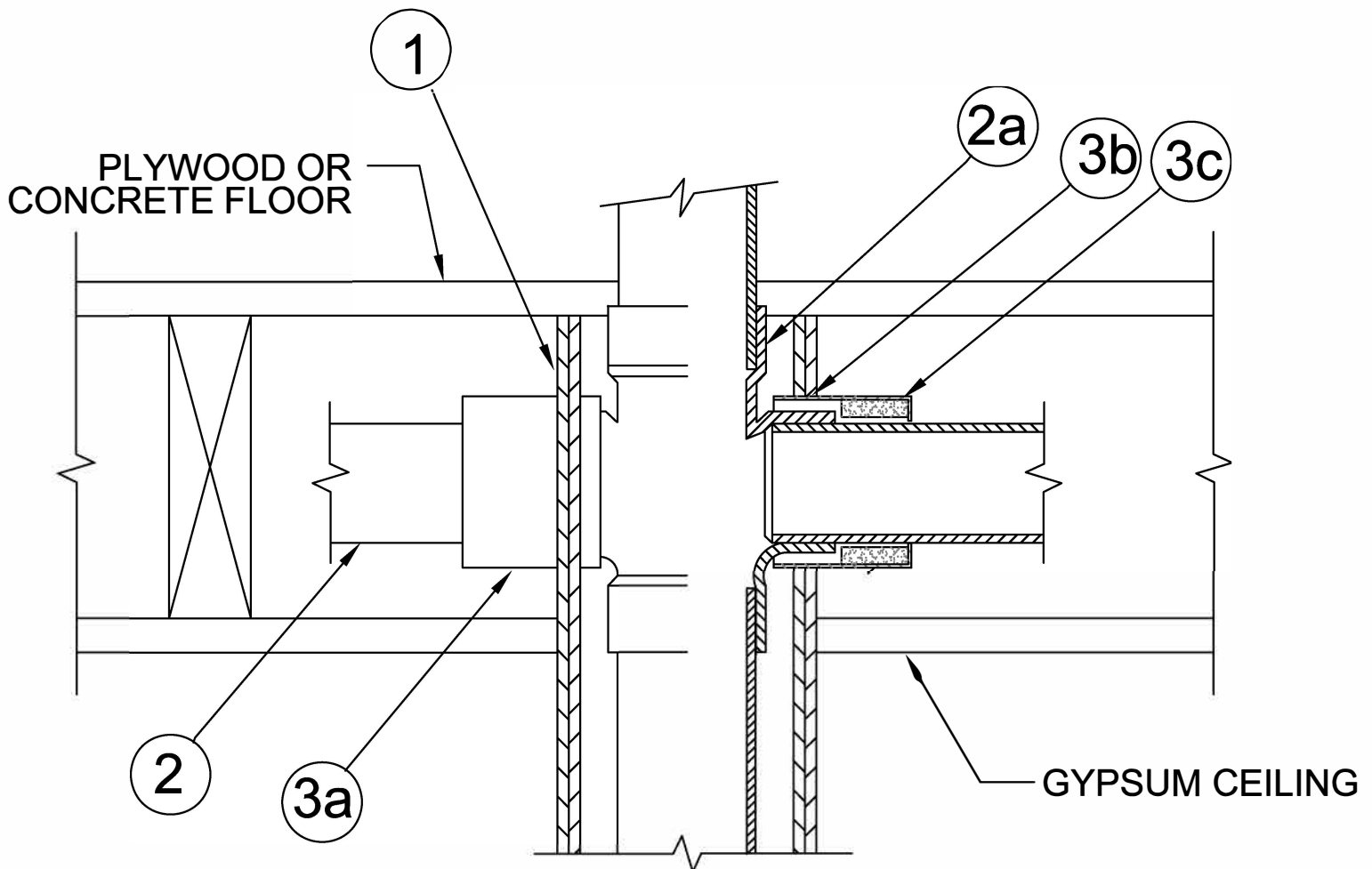
1355 Capital Circle Lawrenceville, GA 30043-5866 U.S.A.

Design No. PS/PV 120-06

Vertical (wall)

Ratings: ASTM E-814 - 2 Hrs. (F), 2 Hrs. (T)

Test Pressure Differential - 2.5 PA (0.0.1 in. of Water) Minimum



1. Wall:

Gypsum board / steel or wood stud wall, with minimum 4-1/2" cavity width, having a fire resistance rating of either 1 or 2 Hrs.

2. Pipe Materials & Support:

Maximum 4" diameter Vented - Solid or Cell-Core ABS, FR P.P. or PVC Pipe.

2a. Maximum 4" diameter ABS, FR P.P. or PVC Hub Fitting.

Pipe shall be reliably supported on both sides of the wall.

3. Hub Seal Poke-Out Firestop Device.

3a. ProSet 26 ga. Metal Sleeve*

3b. Integral PVC Ring secures the Metal Sleeve by solvent cementing the PVC Ring to the pipe.

3c. 3/8" thick X 1 1/2" wide intumescent Wrap Strip secured in end of ProSet 26 ga. metal sleeve.

* **Component Bearing the Warnock Hersey International Certification Mark.**