

# FIRESTOP SYSTEMS

## ProSet Systems, Inc.

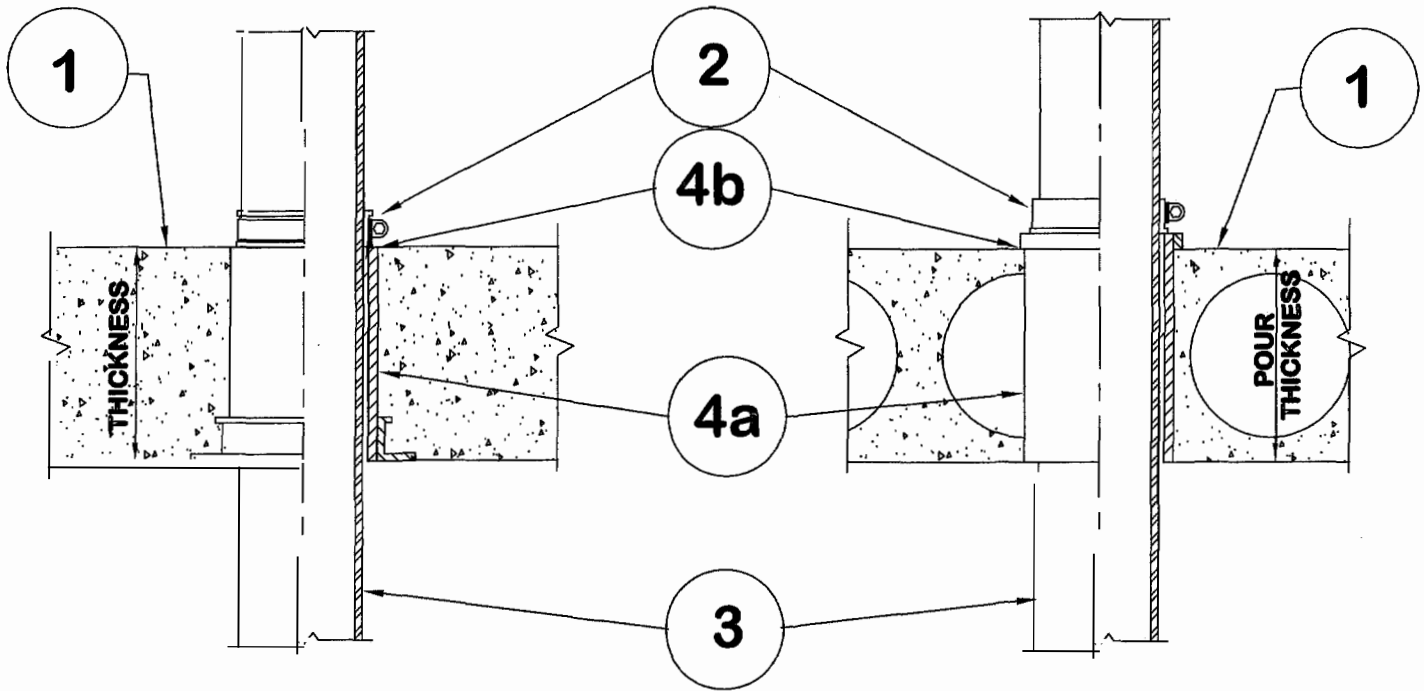
1355 Capital Circle Lawrenceville, GA. 30043-5866 U.S.A.

### Design No. PS/PHV 180-01

Horizontal (Floor), Vertical (Wall) - See item 1.

Ratings: ASTM E-814 -3 Hrs. (F), 30 Min. (T)

Test Pressure Differential -2.0 Pa (0.0.1 in. of Water) Minimum



#### 1. Floor:

Minimum 4-1/2" thick normal density concrete slab or 7-1/2" thick hollowcore precast concrete floor units. Fluted decks with 2-1/2" concrete slab, rating is 1Hr F/FH.

#### WALL:

Minimum 6" thick normal density concrete slab.

#### 2. Pipe Support:

ProSet Riser Clamp. - A ProSet Riser Clamp is required on both sides of a wall penetration. When the gap in between the clamps exceed 1/4", a silicone caulk can be used to seal the gap.

#### 3. Pipe Material:

Maximum diameter 6" cast iron, steel, copper, or glass pipe.

#### 4. Firestop System Components:

4a. ProSet PVC Coupling\*, cast-in-place, or Cored Hole Coupling\*, length equal to slab thickness.

4b. (Optional) Use ProSet Caulk for Waterproofing

Optional increase of T-Rating can be made by using a UL (BRGU) listed pipe covering material meeting a Flame Spread Index of 25 or less and a smoke developed index of 50 or less on the unexposed side side of the pipe penetration.

\* Components Bearing the Warnock Hersey International Certification Mark.