

FIRESTOP SYSTEMS

ProSet Systems, Inc.

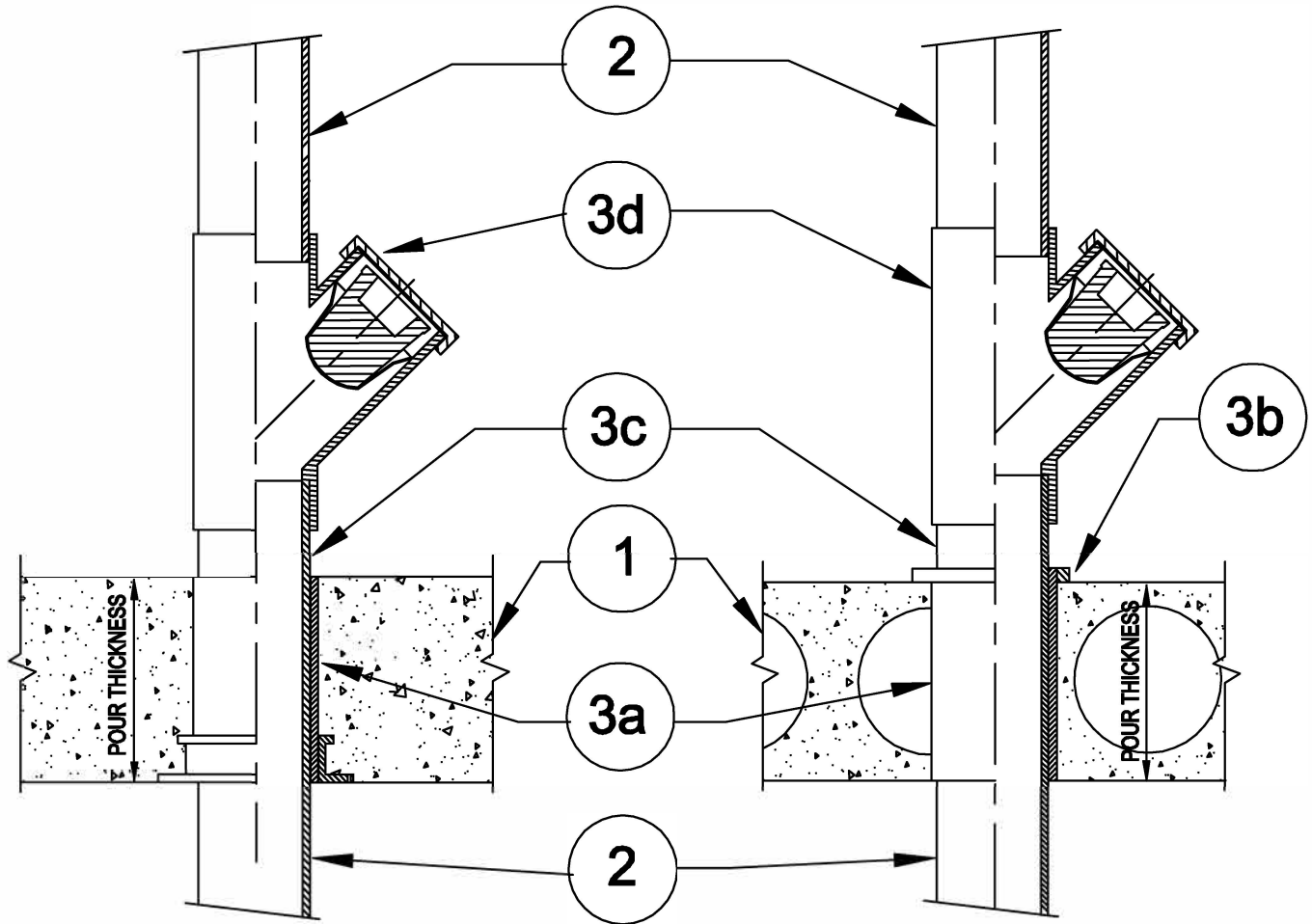
1355 Capital Circle Lawrenceville, GA 30043-5866 U.S.A.

Design No. PS/PH 120-03

Horizontal (Floor) -See item 1.

Ratings: ASTM E-814 - 2 Hrs. (F), 2 Hrs. (T)

Test Pressure Differential - 2.5 Pa (0.01 in. of Water) Minimum



1. Floor: Minimum 4-1/2" thick normal density concrete slab or 7-1/2" thick hollowcore precast concrete floor units. Fluted decks with 2-1/2" concrete slab, rating is 1Hr FT/FTH.
2. Pipe Materials & Pipe Support:
2" through 4" ABS, PVC, Solid or Cell-core pipe. Vertical riser pipe is supported by the firestop device.
3. Firestop System Components:
 - 3a. ProSet PVC Coupling, Cast-in place* or Cored hole Coupling*.
 - 3b. (Optional) ProSet Waterproofing Caulk PS35.
 - 3c. Sch. 40 PVC Pipe Solvent welded into coupling.
 - 3d. ProSet "Code Red" Firestop Wye Fitting* assembled as per manufacturer's instructions.

*** Component Bearing the Warnock Hersey International Certification Mark.**