

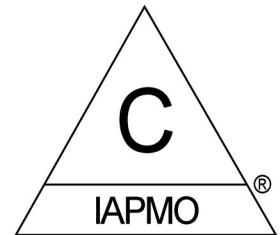
ProVent™ Price List

ProVent Single Stack System

Handling ■ Installation ■ Corrosion
Ease Simplicity Resistance

Effective December 2021

Version PL 09



Copyright © 2017, ProVent Systems Inc., All Rights Reserved

ProVent Systems Inc. ■ 1355 Capital Circle ■ Lawrenceville ■ Georgia ■ 30043-5866
770-339-1782 ■ 800-262-5355 ■ Fax: 770-339-1784

■ www.ProVentSystems.com ■

StackVent (Double Opening)

P4542-SD

4" ProVent Stack Fitting
Double Openings

\$145.20 ea.

P3542-SD

3" ProVent Stack Fitting
Double Openings

\$133.10 ea.

The 4" double fitting has 2 hub openings for back to back fixture openings and 2 spigot ends. The top spigot can be solvent cemented into the ProSet Part # P4549H-FF to self support the fitting. The bottom spigot end can be used for a fitting opening or a coupling E-Z Flex connection. 4"X 3" Bushings can be used in the hubs for 3" branches. EZ Flex connections can also be used in the hubs for ease of installation. There are optional recess-type top connections to raise the elevation of the branch openings wherever necessary.

The 3" double fitting is the same as above except embedded part is # P3549H-FF.

**StackVent (Single Opening - Left Side)**

P4542-SL

4" ProVent Stack Fitting
Single Opening on Left Side of Offset

\$145.20ea.

P3542-SL

3" ProVent Stack Fitting
Single Opening on Left Side of Offset

\$133.10ea.

The 4" and the 3" shown here is where the hub opening is on the left of the double offset side of the stack fitting. Can be installed in the same manner as the double fitting.

**StackVent (Single Opening - Right Side)**

P4542-SR

4" ProVent Stack Fitting
Single Opening on Right Side of Offset

\$145.20 ea.

P3542-SR

3" ProVent Stack Fitting
Single Opening on Right Side of Offset

\$133.10 ea.

The 4" and the 3" shown here is where the hub opening is on the right of the double offset side of the stack fitting. Can be installed in the same manner as the double fitting.



NOTE: Stack Vent Fittings Can Be Ordered With Both Branch Openings Capped At No Extra Charge.

4" ProVent Stack Vent Fitting Capped Both Sides P4542-SX

3" ProVent Stack Vent Fitting Capped Both Sides P3542-SX

BaseVent

P4542B	4"X 3" ProVent Base Fitting	\$104.10ea.
P3542B	3"X 2" ProVent Base Fitting	\$99.25 ea.

The P4542B Base fitting has a 4" run with a 3" upright branch. The two 3" ells are supplied by others. Center from wye to 45° ell is 7-1/2"

The P3542B Base fitting has a 3" run with a 2" upright branch. The two 2" ells are supplied by others. Center from wye to 45° ell is 6-1/8"



Poured-in-Place Sleeves

P4549H-FF	4" Self Seal Flush Fit Stack Sleeve	\$36.30ea.
P3549H-FF	3" Self Seal Flush Fit Stack Sleeve	\$30.90 ea.
P2549H-FF	2" Self Seal Flush Fit Stack Sleeve	\$15.70 ea.

*The Self Seal Sleeve Couplings are used to firestop, secure and waterproof the connecting PVC fittings or pipes passing through **a concrete poured-in-place floor**. Floor depth information required when ordering.*



Cored Hole Sleeves

P4549H-FF-CH	4" Self Seal Cored Hole Sleeve	\$42.35ea.
P3549H-FF-CH	3" Self Seal Cored Hole Sleeve	\$29.05 ea.
P2549H-FF-CH	2" Self Seal Cored Hole Sleeve	\$13.35ea.

*The Self Seal Sleeve Couplings are used to firestop, secure and waterproof the connecting PVC fittings or pipes passing through **a cored hole** through existing or precast concrete floors.*

Floor depth information required when ordering.



EZ-Flex Couplings

P45470	4" EZ-Flex Coupling	\$6.70 ea.
P35470	3" EZ-Flex Coupling	\$5.35 ea.
P25470	2" EZ-Flex Coupling	\$4.90 ea.

The EZ Flex Coupling can be used to insert pipe between the two fixed points by flexing the female end back, insert the pipe then fold back onto the pipe and tighten clamp. Also can be used for easier connection of branch piping to any opening.

EZ Mechanical Flex Coupling: Fits in-between 2-1/2" space, connecting two sections of DWV pipe. Connects PVC to PVC or PVC to Cast Iron DWV Pipe.

P25470-D	2" PVC Coupling w/ EZ-Flex Connection	\$12.35
P35470-D	3" PVC Coupling w/EZ Flex Connection	\$16.25
P45470-D	4" PVC Coupling w/EZ-Flex Connection	\$ 19.40
P3542-C	3" ProVent Cap	\$3.45
P4542-C	4" ProVent Cap	\$4.50
A81121	Quart of Solvent Cement	\$13.05
A81170	Quart Of Primer	\$11.55
P35470-WT	3" EZ Water Tester Device	\$25.75
P45470-WT	4" EZ Water Tester Device	\$28.45

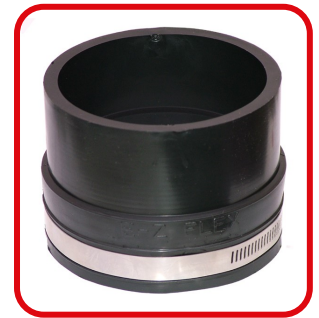
ProVent Double Wye

P35392	3" x 2" Double PVC Wye	\$20.50 ea.
--------	------------------------	-------------

"This special 3" X 2" Double Street Wye provides two openings on either side of the ProVent Stack and fits in between the stack and a 12" rough water closet opening. The side openings discharge into the horizontal pipe above the centerline.

ProVent Whisper-Quiet Shell Pipe (US Patent Pending)

PP443SP	4" Whisper Quiet Shell Pipe	\$6.25/ft
F42	Pre-Cut 4" Spacer Ring	\$1.65/ea.
PP343SP	3" Whisper Quiet Shell Pipe	\$5.75/ft
F22	Pre-Cut 2" Spacer Ring	\$1.55/ea.
F32	Pre-Cut 3" Spacer Ring	\$1.40/ea
PP243SP	2" Whisper Quiet Shell Pipe	\$5.00/ft



The Shell Pipe halves are snap around the Spacer Rings enclosing the pipe, providing an air space for enhanced sound proofing.

LIMITED PARTS WARRANTY

Sellers products are carefully inspected for manufacturing defects; however, it is not always possible to detect hidden defects. Said products are warranted only to the extent that seller will replace without charge, products proved to have manufacturing defects within 6 months of the date of delivery thereof and provided seller has been given an opportunity to inspect the product alleged to be defective and the installation or use thereof. **NO WARRANTY IS INCLUDED AGAINST ANY EXPENSE FOR REMOVAL, REINSTALLATION OR OTHER CONSEQUENTIAL DAMAGES ARISING FROM ANY DEFECT. THE WARRANTIES SET OUT ABOVE ARE THE ONLY WARRANTIES MADE BY SELLER AND ARE EXPRESSLY IN LIEU OF ALL OTHER WARRANTIES, EXPRESSED OR IMPLIED, INCLUDING THE WARRANTIES OF MERCHANTABILITY AND FITNESS FOR A PARTICULAR PROPOSE.**