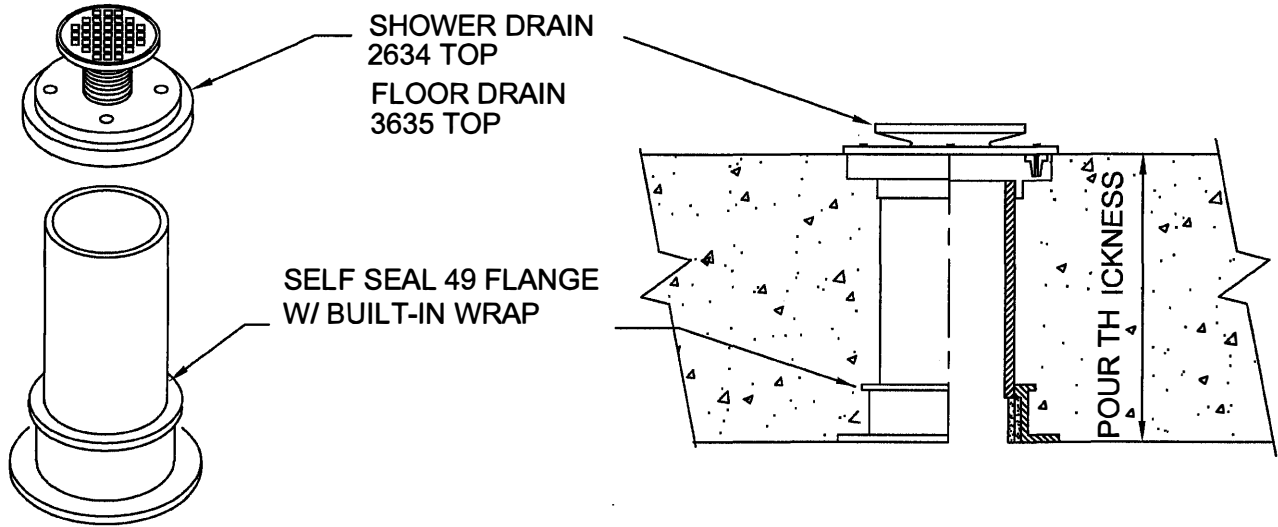


# TILE SHOWER DRAIN ASSEMBLY

CONCRETE ON WOOD FORM  
FOR FLOORS



SEE DRAWING C-6510-B FOR INSTALLATION ON STEEL FORMS.

Size	Part No.	Description	Price	Top Size
2"	P2563H-S/F-SSW	2" Shower Drain With built-in Wrap Strip	63.58	4.25" NB
2"	P2563HX-F-SSW	2" Floor Drain With built-in Wrap Strip	75.60	5.00" NB
3"	P3563HX- F-SSW	3" Floor Drain With built-in Wrap Strip	88.25	5.00" NB
4"	P4563HX- F-SSW	4" Floor Drain With built-in Wrap Strip	93.05	5.00" NB

-S After part number is for Shower Drain. -F After part number is for Floor Drain  
The Shower Drain extends above the floor - The Floor Drain is flush with the floor

Chrome or Polish Brass available at same price- Add CP or PB to the end of part number.

Call factory for pricing on other types and sizes of drain tops.



W.H. Directory Reference 99 Edition  
Firestop Device  
W.H. Design No. PS/PH 120-07  
F Rating 2 Hrs.



**PROSET**<sup>®</sup>  
**SYSTEMS**  
FIRESTOP PENETRATOR™

DATE :  
5-31-21

DRG. NO.  
C-6330-ASp