

FIRESTOP SYSTEMS

ProSet Systems, Inc.

1355 Capital Circle Lawrenceville, GA. 30043-5866 U.S.A.

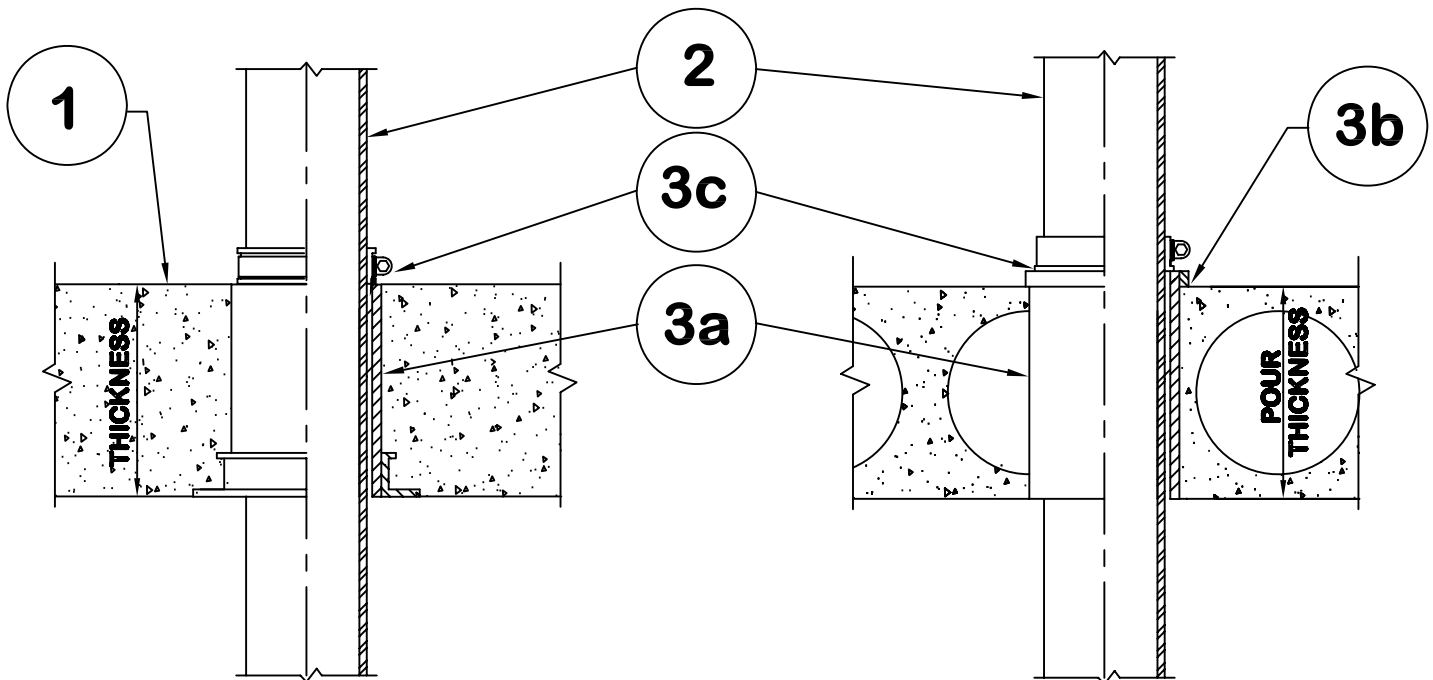
Design No. PS/PHV 120-05

Horizontal (Floor), Vertical (Wall) - See item 1.

Ratings: ASTM E-814 - 2 Hrs. (F), 2 Hrs. (T)

CAN/ULC-S115 - 2 Hrs. (F/FH), 2 Hrs. (FT/FTH)

Test Pressure Differential - 2.5 Pa (0.01 in. of Water) Minimum



1. Floor:

Minimum 4-1/2" thick normal density concrete slab or 7-1/2" thick hollowcore precast concrete floor units. Fluted decks with 2-1/2" concrete slab, rating is 1Hr FT/FTH.

WALL:

Minimum 6" thick normal density concrete slab.

2. Pipe Material:

Pressure piping, CPVC Sch. 40 or tubing wall thicknesses, maximum diameter 3".

Pressure piping, CPVC Sch. 80 or tubing wall thicknesses, maximum diameter 6".

3. Firestop System Components:

3a. ProSet PVC Coupling*, cast-in-place, or Cored Hole Coupling*, length equal to slab thickness.

3b. (Optional) Use ProSet Caulk for Waterproofing

3c. Proset Riser Clamp installed at top of coupling only for floors and both sides of coupling for walls.

3d. (Not Shown) A Blank ProSeal Plug device can be used on the top side to seal off any unused penetration. Part Numbers for blanks; 2" P20000, 3" P30200, 4" P40300, 6" P60000

*** Components Bearing the Warnock Hersey International Certification Mark.**