

FIRESTOP SYSTEMS

ProSet Systems, Inc.

1355 Capital Circle Lawrenceville, GA. 30043-5866 U.S.A.

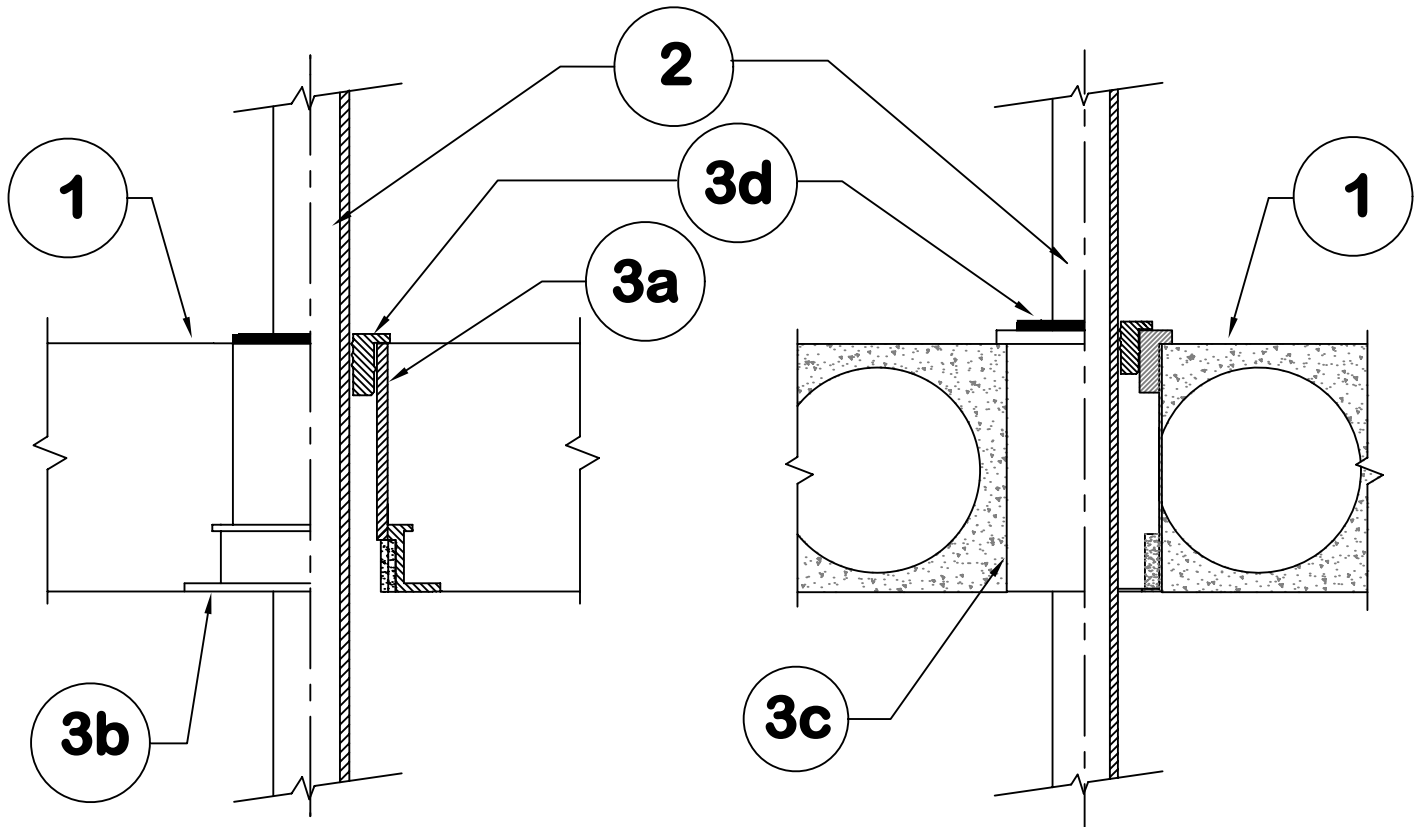
Design No. PS/PH 180-04

Horizontal (Floor) See item 1.

Ratings: ASTM E-814 - 3 Hrs. (F), 3 Hrs. (T)

CAN/ULC-S115 - 3 Hrs. (F/FH), 3 Hrs. (FT/FTH)

Test Pressure Differential - 50 Pa (0.20 in. of Water) Minimum



1. FLOOR: Minimum 4-1/2" thick normal density concrete slab or 7- 1/2" thick hollowcore precast concrete units. Fluted decks with 2-1/2" concrete, rating is 1 Hr.F/FH.

2. Pipe Materials & Support:

Pipe Sizes 1/2" through 4" diameter Vented or Unvented ABS, CPVC, PVC, Pex, Polypro piping. Riser pipe can be supported by the White ProSet ProSeal Plug.

3. Firestop System Components:

3a. ProSet Series #43 Sleeve Coupling* with 3/4" wide Intumescent Wrap Strip

3b. ProSet Series #49 Fastening Flange* with a Built-in 1 1/2" wide Intumescent Wrap Strip.

3c. ProSet Series #55 Cored hole coupling with adjustable 26 gauge metal insert collar with the same as item 3b factory built-in intumescent wrap at the bottom.

3d. Proper size ProSet White ProSeal Plugs installed into the top of the sleeves.

Important Note: Use the new White ProSeal Plug for PVC or CPVC pressure pipe.

*** Components Bearing the Warnock Hersey International Certification Mark.**