

FIRESTOP SYSTEMS

ProSet Systems, Inc.

1355 Capital Circle Lawrenceville, GA 30043-5866 U.S.A.

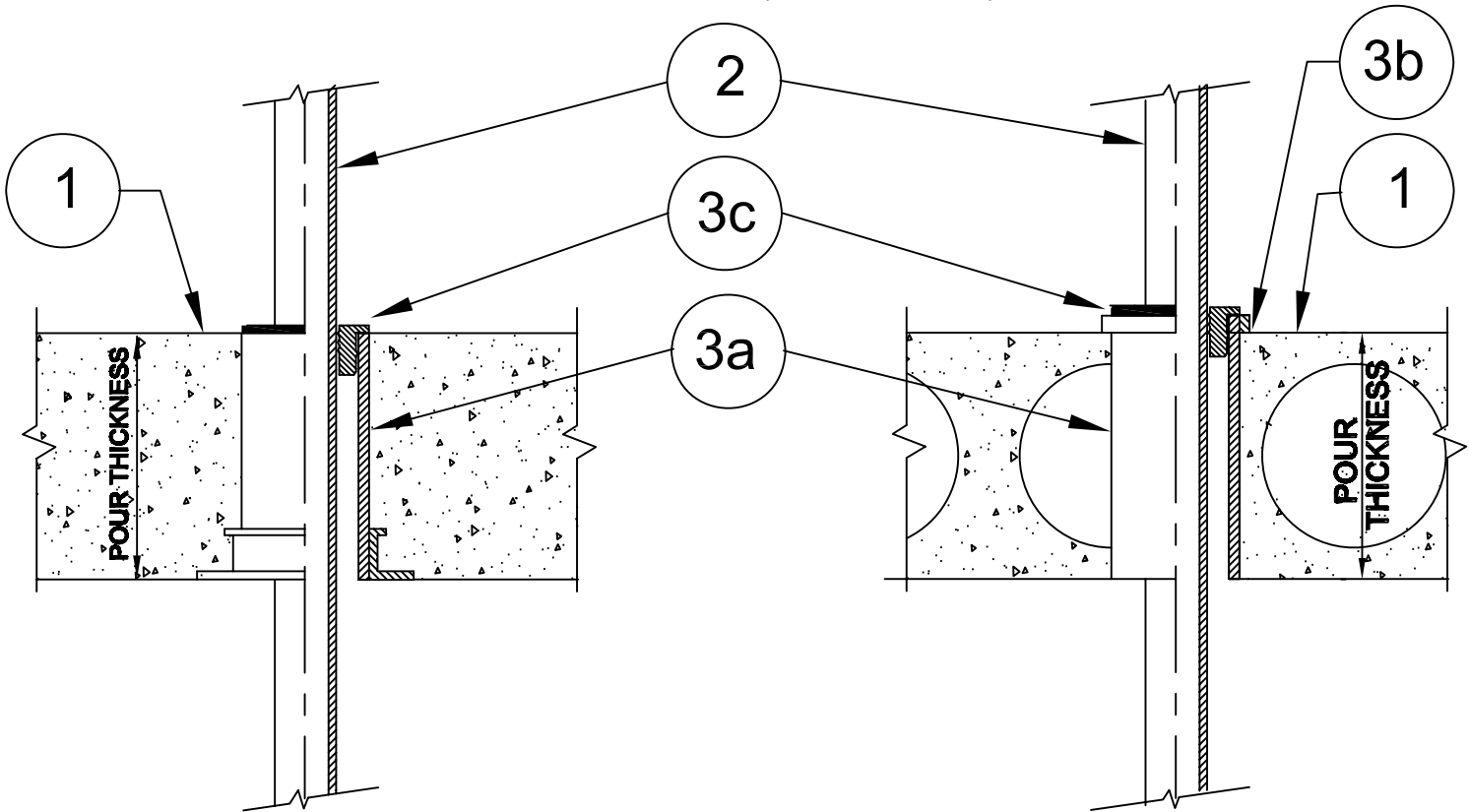
Design No. PS/PHV 120-04

Horizontal (Floor) Vertical (wall) -See item 1.

Ratings: ASTM E-814 - 2 Hrs. (F), 2 Hrs. (T)

CAN/ULC-S115 - 2 Hrs. (F/FH), 2 Hrs. (FT/FTH)

Test Pressure Differential - 50 Pa (0.20 in. of Water) Minimum



1. FLOOR:

Minimum 4-1/2" thick normal density concrete slab or 7-1/2" thick hollowcore precast concrete floor units. Fluted decks with 2-1/2" concrete slab, rating is 1Hr FT/FTH.

WALL:

Minimum 6" thick normal density concrete slab.

2. Pipe Materials & Pipe Support:

Vented or unvented piping CPVC, Pex or PVC Sch. 40 or tubing wall thickness, maximum diameter 1 1/2" Device can be used for waste pipe.

Vertical riser support for pass through pipe is supported by the ProSeal Plug firestop device.

3. Firestop System Components:

3a. ProSet Series # 43 Sleeve Coupling* Core a 2-3/4" or 3" hole for the # 43 CH sleeve.

3b. ProSet Seal Ring for cored hole sleeve and (Optional) ProSet Waterproofing Caulk.

3c. White ProSet ProSeal Plugs installed at top of sleeve coupling only for floors and on both sides for walls.

IMPORTANT: The new White Sanoprene ProSeal Plug must be used for CPVC or PVC pressure pipe - Not Black

* The T Rating for vented pipe is 1 Hr.

* Component Bearing the Warnock Hersey International Certification Mark.