

FIRESTOP SYSTEMS

ProSet Systems, Inc.

1355 Capital Circle Lawrenceville, GA. 30043-5866 U.S.A.

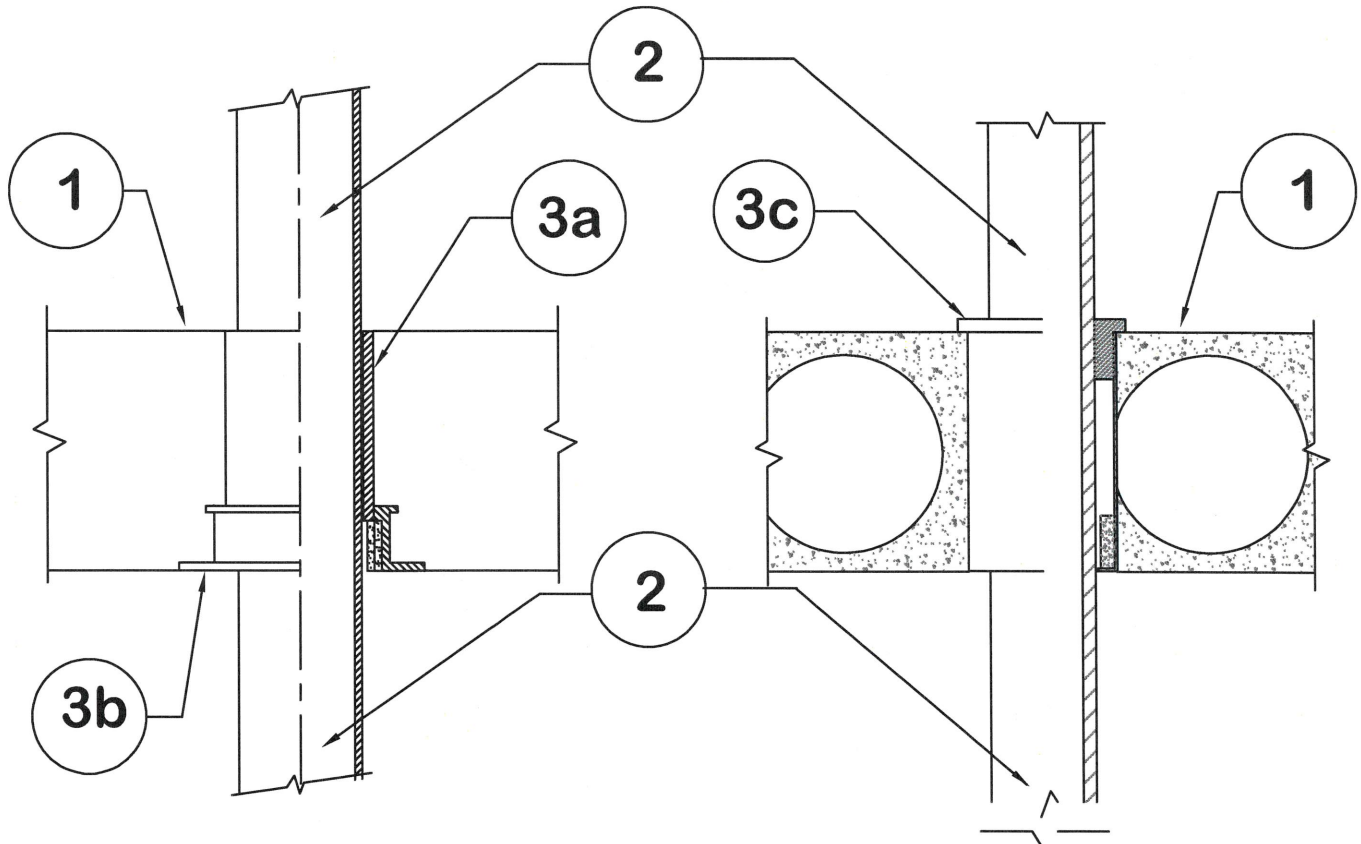
Design No. PS/PHV 180-03

Horizontal (Floor), Vertical (Wall)

Ratings: ASTM E-814 - 3 Hrs. (F), 3 Hrs. (T)

CAN/ULC-S115 - 3 Hrs. (F/FH), 3 Hrs. (FT/FTH)

Test Pressure Differential - 50 Pa (0.20 in. of Water) Minimum



- 1. FLOOR:** Minimum 4-1/2" thick normal density concrete slab.
Fluted decks with 2-1/2" concrete slab, rating is 1Hr F/FH
Or (Floor Only) 7-1/2" thick hollowcore precast concrete units.
- WALL:** Minimum 6" thick classified block or normal density concrete.

2. Pipe Materials & Support:

Maximum 4" diameter Vented or Unvented ABS, Solid or cell-core PVC, or F.R. P.P.
Riser pipe can be supported by solvent cementing or by using a ProSet Riser Clamp assembly.
Transitions from plastic to cast iron, cast iron to plastic or cast iron to cast iron can be made using approved connections from the penetration to the pipes on both sides. The ASTM E-814 F & T and the CAN/ULC S-115 (F/FH) & (FT/FTH) ratings are the same as shown above.

3. Firestop System Components:

- 3a.** ProSet Series #43 Sleeve Coupling*
- 3b.** ProSet Series #49 Fastening Flange* with a Built-in 1 1/2" wide Intumescent Wrap Strip.
Wrap strip flange is installed on the bottom of a floor and on both sides of a wall.
Built-in ProSet Self Seal Wrap Strips required: One 1/4" thick wrap for 2" pipe,
one 3/8" thick wrap for 3" pipe and one 5/8" thick wrap for 4" pipe.
- 3c.** ProSet Series #55 Cored hole coupling with adjustable 26 gauge metal insert collar
with the same as item 3b. sizes factory built-in intumescent wrap at the bottom.

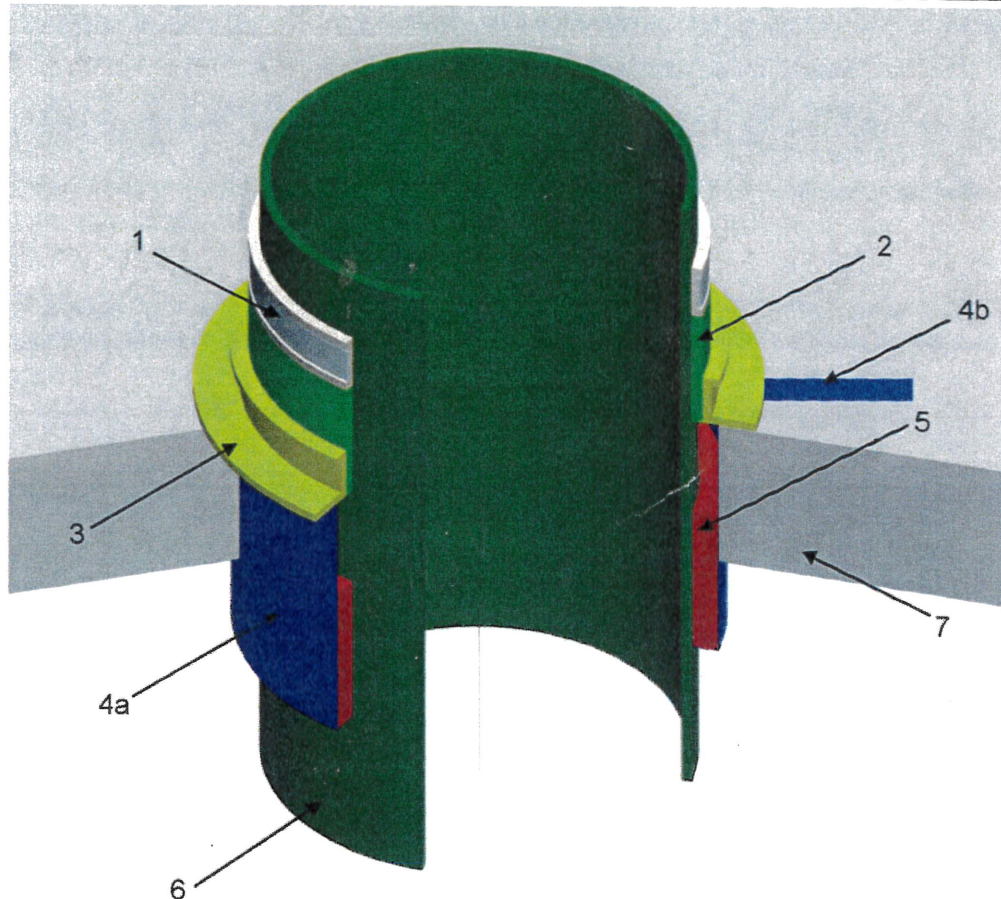
* Components Bearing the Warnock Hersey International Certification Mark.

Design No. PS/PH 180-05
6-INCH SELF SEAL STACK ASSEMBLY

ProSet Systems Inc.
Self Seal 6" Stack Assembly

ASTM E814 ratings achieved:

F Rating – 180 minutes
T Rating – 178 minutes



1. A06214-P 6" PVC riser clamp.
2. ProSet P-43 PVC pipe. PVC is constructed of Type 1 fire rated PVC resin.
3. ProSet P-43 PVC pipe predrilled fastening flange. PVC is constructed of Type 1 fire rated PVC resin.
4. a) 26 gage (min. 0.0179" thick) sheet steel extension sleeve. Sleeve has diameter of 7-1/2". Extends a minimum 3" below bottom surface of concrete.
b) Two 26 gage sheet metal pre-drilled fastening tabs extend from top edge of metal extension sleeve outward on the upper surface of the floor assembly from underneath the P-43 flange. These tabs are positioned on opposing sides of the assembly (180° apart).
5. ProSet part No. WSPS634: 3/4" x 4-1/2" Intumescent wrap.
6. Schedule 40 DWV 6" PVC drain pipe.
7. Concrete slab minimum 4-1/2" thick and with a minimum compressive strength of 2800 psi.

FIRESTOP SYSTEMS

ProSet Systems, Inc.

1355 Capital Circle Lawrenceville, GA. 30043-5866 U.S.A.

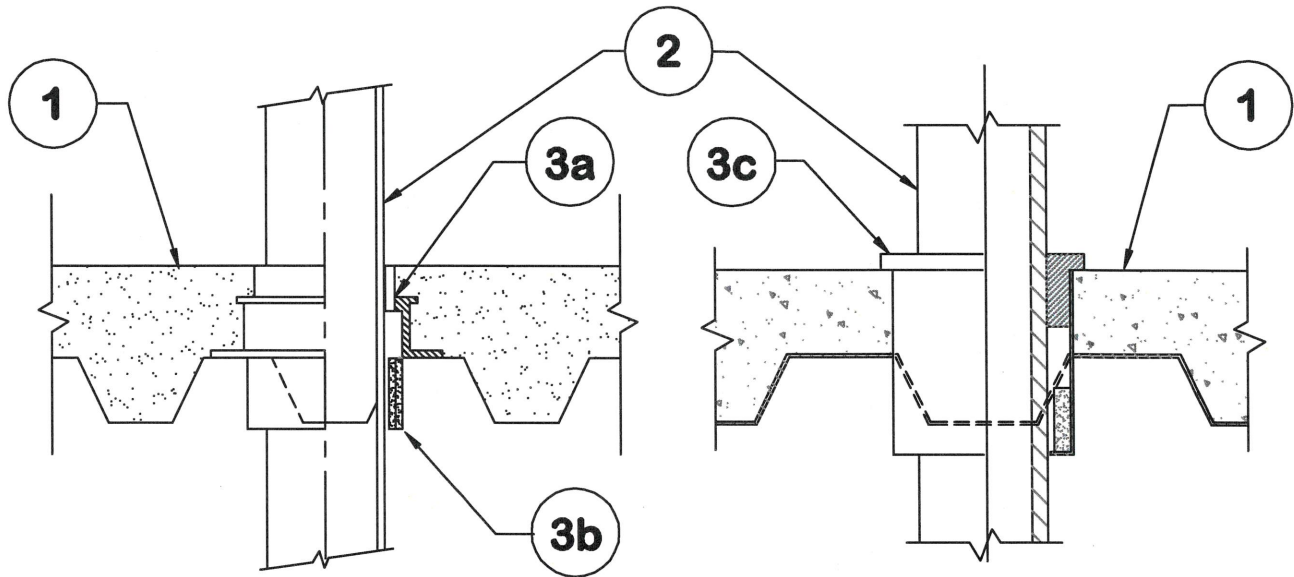
Design No. PS/PH 120-14

Horizontal (Floor) - See item 1.

Ratings: ASTM E-814 - 2 Hrs. (F), 2 Hrs. (T)

CAN/ULC-S115 - 2 Hrs. (F/FH), 2 Hrs. (FT/FTH)

Test Pressure Differential - 50 Pa (0.20 in. of Water) Minimum



1. Floor:

Minimum 2-1/2" concrete slab, poured on corrugated metal flutes.

2. Pipe Material and Pipe Support:

Maximum 4" F.R. PP, ABS, Cellular core PVC or F.R. PP. Support at penetration by solvent cementing the pass through pipe to the embedded PVC sleeve coupling device.

3. Firestop Device:

3a. Cast-in -Part numbers P2549H-G*, 2" P3549H-G* 3" and P4549H-G*, 4".

3b. Adjustable 26 gauge sheet metal insert collar with factory built-in intumescent wrap with collar extension to the bottom of the metal corrugations.

3c. ProSet Series #55 Cored hole coupling with adjustable 26 gauge insert collar with a factory built-in intumescent wrap at the bottom.

*** Components Bearing the Warnock Hersey International Certification Mark.**