

# FIRESTOP SYSTEMS

## ProSet Systems, Inc.

1355 Capital Circle Lawrenceville, GA. 30043-5866 U.S.A.

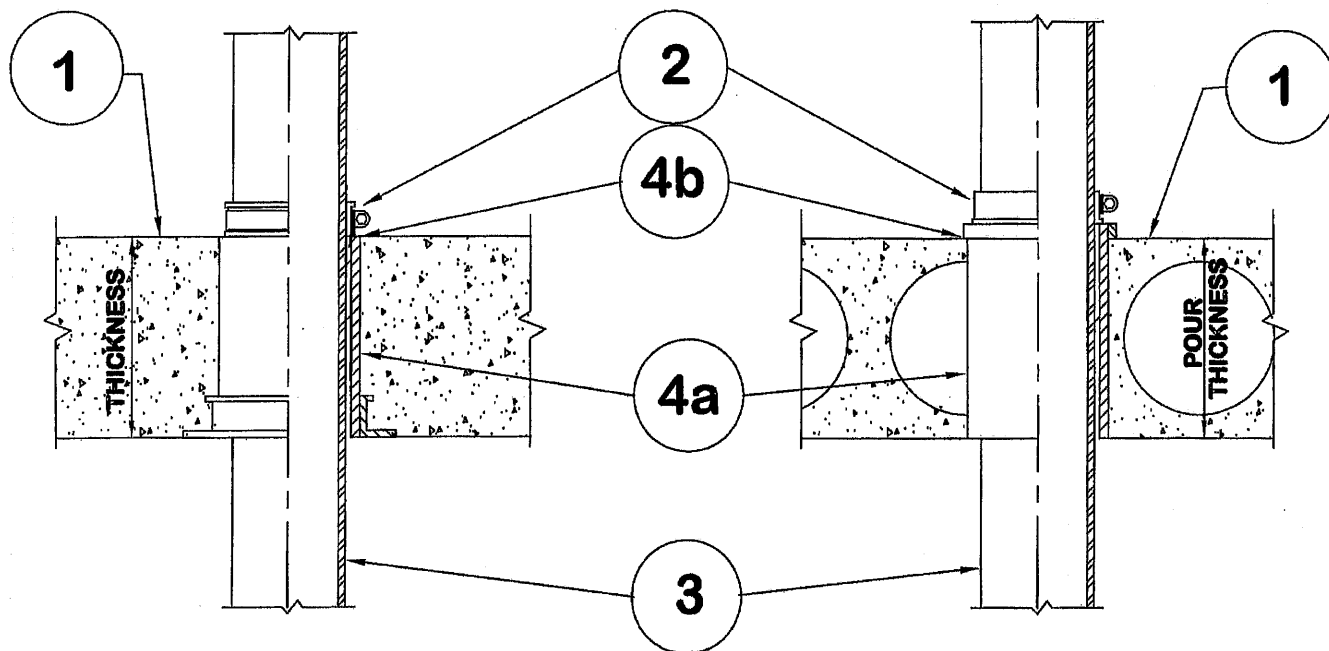
### Design No. PS/PHV 180-01

Horizontal (Floor), Vertical (Wall) - See item 1.

Ratings: ASTM E-814 - 3 Hrs. (F), 30 Min. (T)

CAN/ULC-S115 - 3 Hrs. (F/FH), 30 Min. (FT/FTH)

Test Pressure Differential - 10 Pa (0.05 in. of Water) Minimum



#### 1. Floor:

Minimum 4-1/2" thick normal density concrete slab or 7-1/2" thick hollowcore precast concrete floor units. Fluted decks with 2-1/2" concrete slab, rating is 1Hr F/FH.

#### WALL:

Minimum 6" thick normal density concrete slab.

#### 2. Pipe Support:

ProSet Riser Clamp. - A ProSet Riser Clamp is required on both sides of a wall penetration. When the gap in between the clamps exceed 1/4", a silicone caulk can be used to seal the gap.

#### 3. Pipe Material:

Maximum diameter 6" cast iron, steel, copper, or glass pipe.

#### 4. Firestop System Components:

4a. ProSet PVC Coupling\*, cast-in-place, or Cored Hole Coupling\*, length equal to slab thickness.

4b. (Optional) Use ProSet Caulk for Waterproofing

Optional increase of T-Rating can be made by using a UL (BRGU) listed pipe covering material meeting a Flame Spread Index of 25 or less and a smoke developed index of 50 or less on the unexposed side side of the pipe penetration.

\* Components Bearing the Warnock Hersey International Certification Mark.

# FIRESTOP SYSTEMS

## ProSet Systems, Inc.

1355 Capital Circle Lawrenceville, GA. 30043-5866 U.S.A.

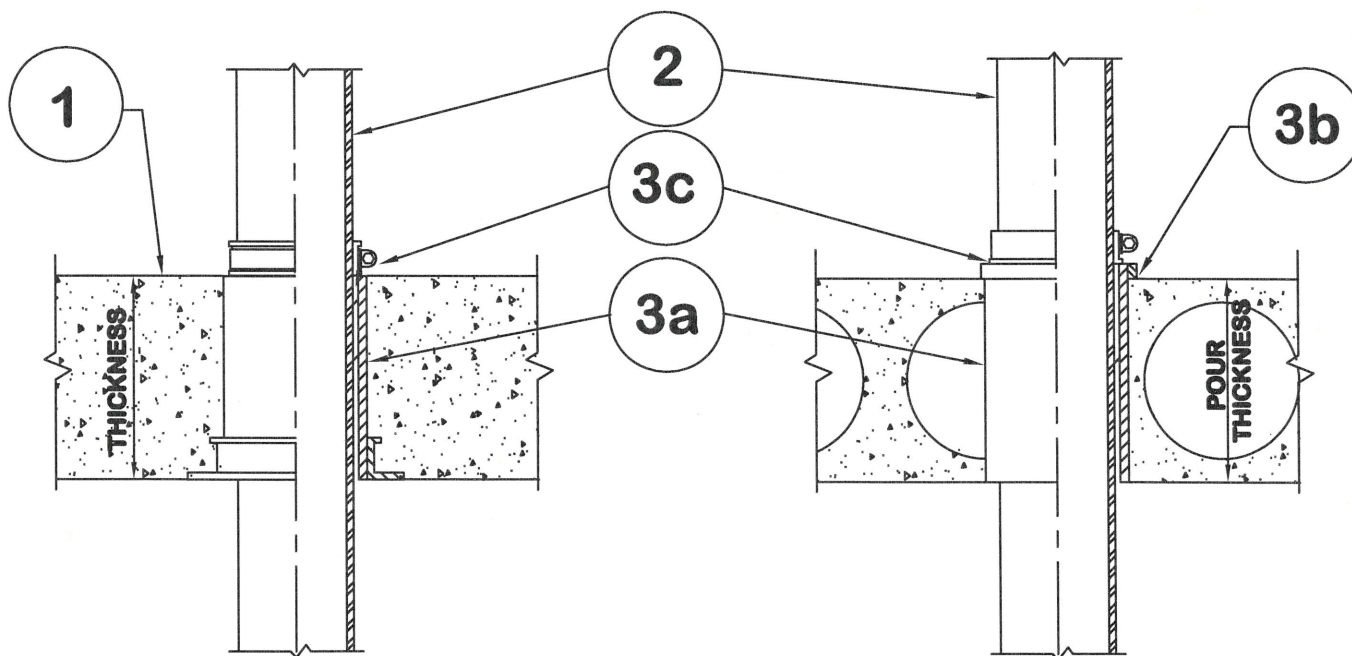
### Design No. PS/PHV 120-05

Horizontal (Floor), Vertical (Wall) - See item 1.

Ratings: ASTM E-814 - 2 Hrs. (F), 2 Hrs. (T)

CAN/ULC-S115 - 2 Hrs. (F/FH), 2 Hrs. (FT/FTH)

Test Pressure Differential - 2.5 Pa (0.01 in. of Water) Minimum



#### 1. Floor:

Minimum 4-1/2" thick normal density concrete slab or 7-1/2" thick hollowcore precast concrete floor units. Fluted decks with 2-1/2" concrete slab, rating is 1Hr FT/FTH.

#### WALL:

Minimum 6" thick normal density concrete slab.

#### 2. Pipe Material:

Pressure piping, CPVC Sch. 40 or tubing wall thicknesses, maximum diameter 3".

Pressure piping, CPVC Sch. 80 or tubing wall thicknesses, maximum diameter 6".

#### 3. Firestop System Components:

3a. ProSet PVC Coupling\*, cast-in-place, or Cored Hole Coupling\*, length equal to slab thickness.

3b. (Optional) Use ProSet Caulk for Waterproofing

3c. Proset Riser Clamp installed at top of coupling only for floors and both sides of coupling for walls.

3d. (Not Shown) A Blank ProSeal Plug device can be used on the top side to seal off any unused penetration. Part Numbers for blanks; 2" P20000, 3" P30200, 4" P40300, 6" P60000

**\* Components Bearing the Warnock Hersey International Certification Mark.**