

FIRESTOP SYSTEMS

ProSet Systems, Inc.

1355 Capital Circle Lawrenceville, GA. 30043-5866 U.S.A.

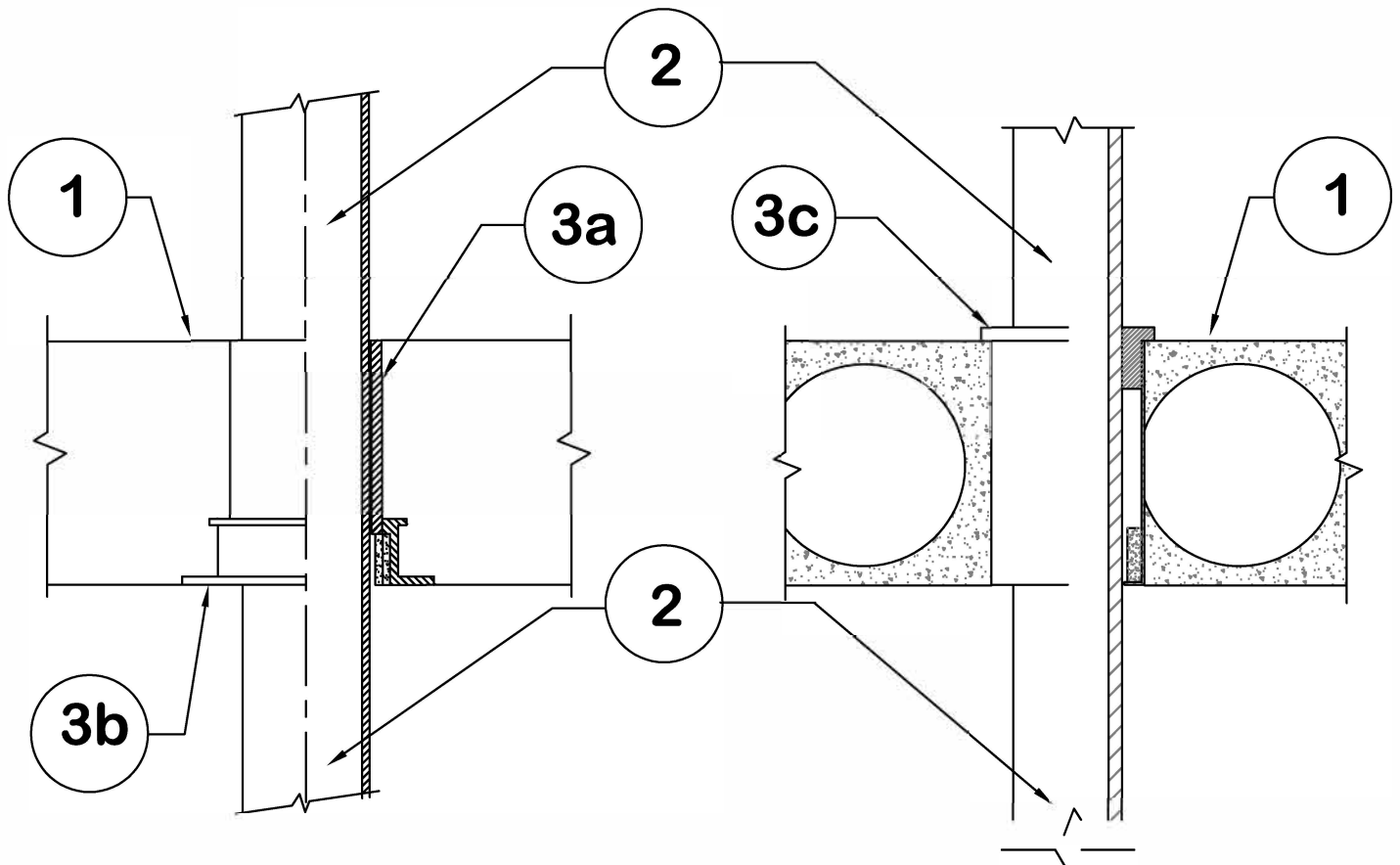
Design No. PS/PHV 180-03

Horizontal (Floor), Vertical (Wall)

Ratings: ASTM E-814 - 3 Hrs. (F), 3 Hrs. (T)

CAN/ULC-S115 - 3 Hrs. (F/FH), 3 Hrs. (FT/FTH)

Test Pressure Differential - 50 Pa (0.20 in. of Water) Minimum



- 1. FLOOR:** Minimum 4-1/2" thick normal density concrete slab.
Fluted decks with 2-1/2" concrete slab, rating is 1Hr F/FH
Or (Floor Only) 7-1/2" thick hollowcore precast concrete units.
- WALL:** Minimum 6" thick classified block or normal density concrete.

2. Pipe Materials & Support:

Maximum 4" diameter Vented or Unvented ABS, Solid or cell-core PVC, XFR or F.R. P.P.
Riser pipe can be supported by solvent cementing or by using a ProSet Riser Clamp assembly.
Transitions from plastic to cast iron, cast iron to plastic or cast iron to cast iron can be made using approved connections from the penetration to the pipes on both sides. The ASTM E-814 F & T and the CAN/ULC S-115 (F/FH) & (FT/FTH) ratings are the same as shown above.

3. Firestop System Components:

3a. ProSet Series #43 Sleeve Coupling*

3b. ProSet Series #49 Fastening Flange* with a Built-in 1 1/2" wide Intumescent Wrap Strip.
Wrap strip flange is installed on the bottom of a floor and on both sides of a wall.
Built-in ProSet Self Seal Wrap Strips required: One 1/4" thick wrap for 2" pipe,
one 3/8" thick wrap for 3" pipe and one 5/8" thick wrap for 4" pipe.

3c. ProSet Series #55 Cored hole coupling with adjustable 26 gauge metal insert collar
with the same as item 3b. sizes factory built-in intumescent wrap at the bottom.

*** Components Bearing the Warnock Hersey International Certification Mark.**