

FIRESTOP SYSTEMS

ProSet Systems, Inc.

1355 Capital Circle Lawrenceville, GA 30043-5866 U.S.A.

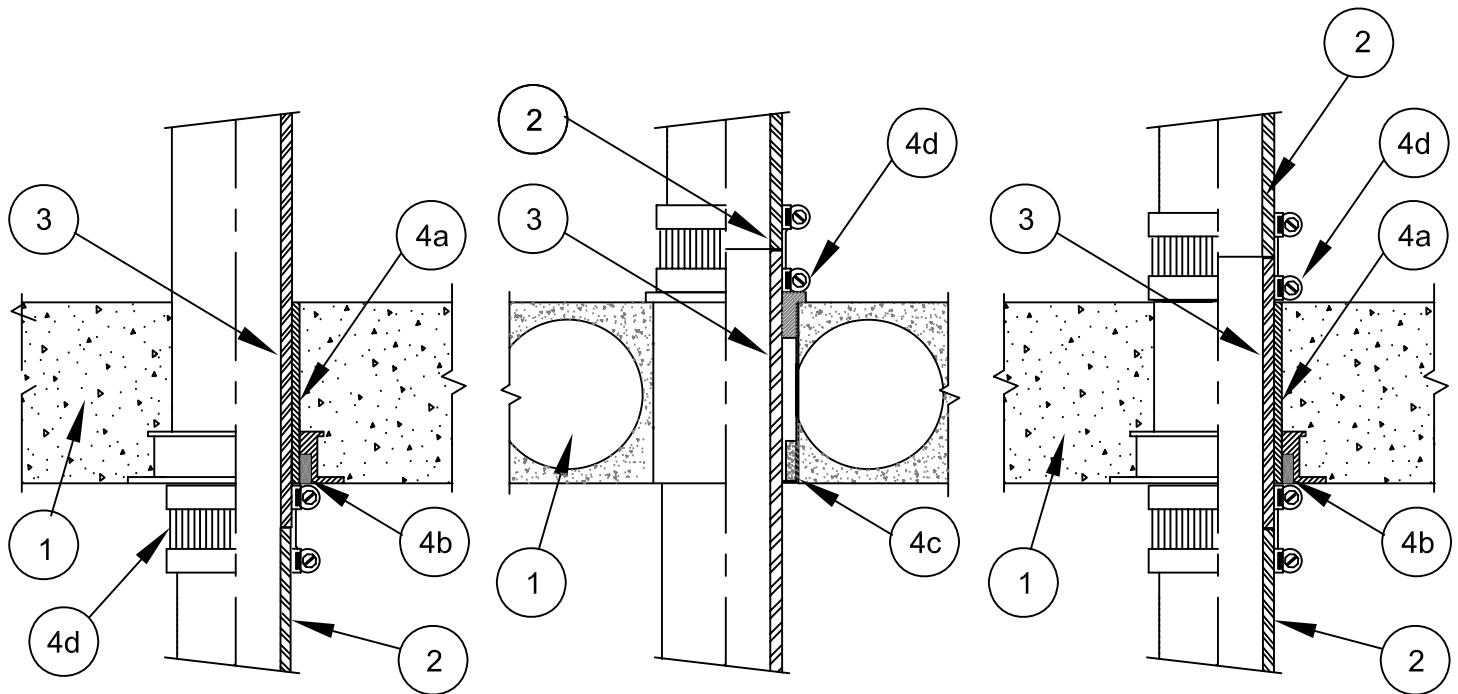
Design No. PS/PHV 180-04

Horizontal (Floor) or Vertical (Wall)

Ratings: ASTM E-814 - 3 Hrs. (F), 3 Hrs. (T)

CAN/ULC-S115 - 3 Hrs. (F/FH), 3 Hrs. (FT/FTH)

Test Pressure Differential - 50 Pa (0.20 in. of Water) Minimum



- 1. Floor:** Minimum 4-1/2" thick normal density concrete slab.
Or (Floor Only) 7-1/2" thick hollowcore precast concrete units.
Wall: Minimum 6" thick normal density slab.

2. Pipe Materials & Support:

Maximum 4" diameter Vented or Unvented Solid or cell-core to Cast Iron transition pipe. Plastic riser pipe is supported by solvent cementing the pipe to the sleeve or using a ProSet Riser Clamp. Transitions from plastic to cast iron, cast iron to plastic or cast iron to cast iron can be made using approved connections from the penetration to the pipes on both sides. The ASTM E-814 F & T and the CAN/ULC S-115 (F/FH) & FT/FTH) ratings are the same as shown above.

3. Pass Through Pipe:

Solid or cell-core PVC or ABS.

4. Firestop System Components:

4a. ProSet Series #43 Sleeve Coupling*

4b. ProSet Series #49 Fastening Flange* with Built-in Intumescent Wrap Strips.

Wrap strip flange is Installed on the bottom of a floor and both sides of a wall.

Built-in ProSet Self Seal Wrap Strips required: One 1/4" thick for 2" pipe,
one 3/8" thick wrap for 3" pipe and one 5/8" thick wrap for 4" pipe.

4c. ProSet Series #55 Cored hole coupling with adjustable 26 gauge metal sleeve with wrap strip.

4d. ProSet Mechanical Joint adaptor coupling.

*** Component Bearing the Warnock Hersey International Certification Mark**