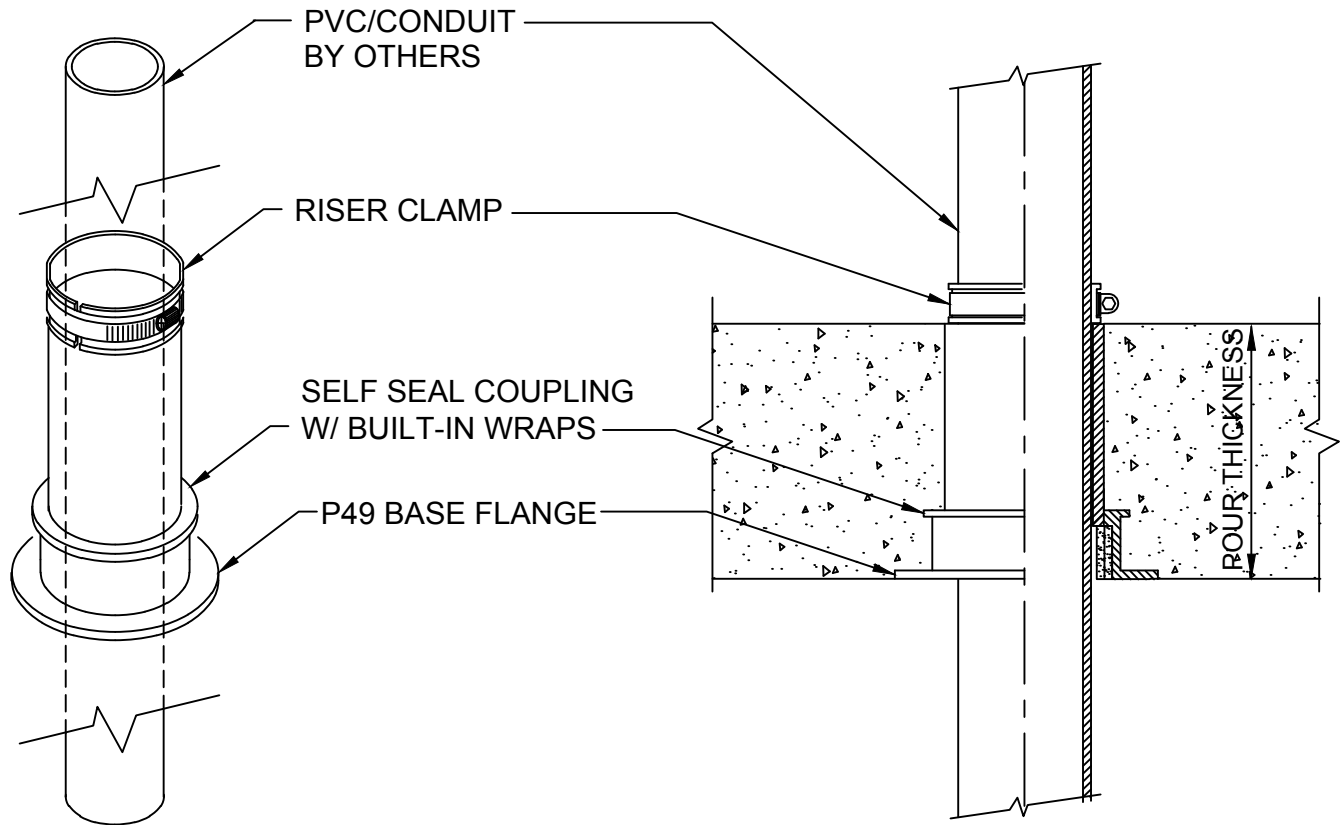


CAST IN PLACE PENETRATION

FOR 3½" AND 4" PVC CONDUIT
POUR CONCRETE ON WOOD FORM
FOR FLOORS



IMPORTANT NOTES :

1. Use nails through flange holes to mount the sleeve coupling to the deck.
2. After concrete is poured, remove protective cap.
3. Insert the through pipe from either the top or the bottom side of the Green lettered coupling.
4. Install riser clamp around pipe to support and draftstop clamp on both sides for walls.



W.H. Directory Reference 00 Edition
Firestop Device
W.H. Design No. PS/PHV 180-03
F Rating 3 Hrs.



PROSET[®]
SYSTEMS
FIRESTOP PENETRATOR™

DATE :
12-10-19
DRG . NO .
E-9049-A