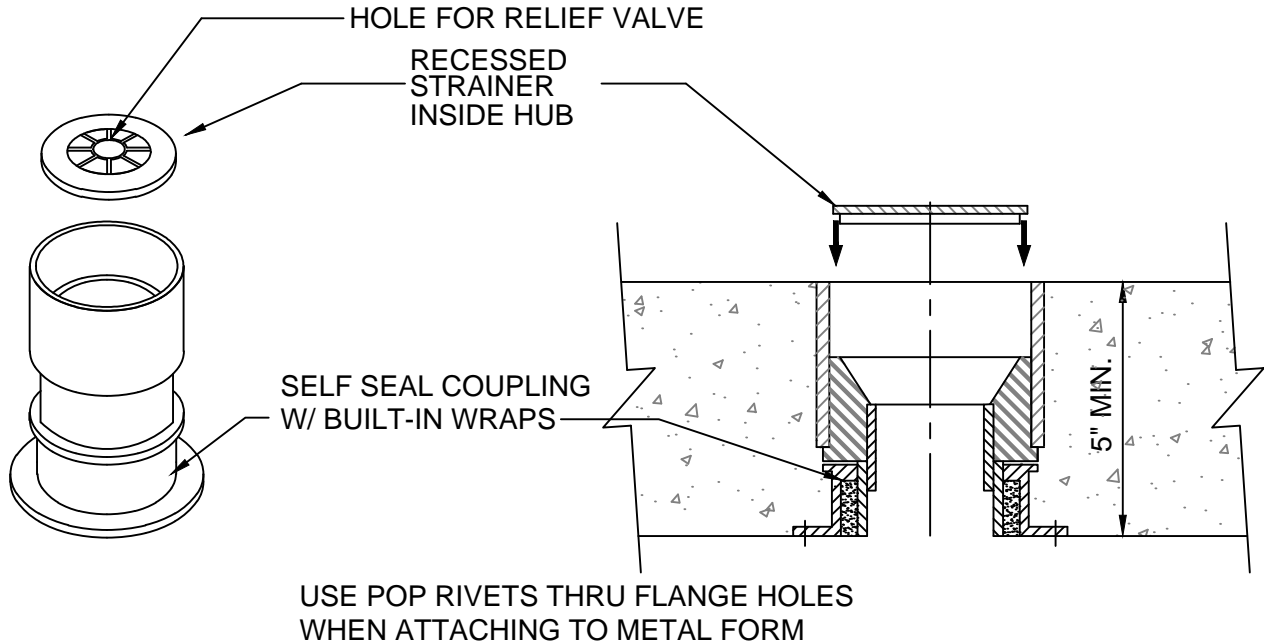


HUB/FLOOR COMBO DRAIN ASSEMBLY

CONCRETE ON WOOD OR STEEL FORM
FOR UTILITY ROOM FLOORS



STRAINER CAN BE FLUSH WITH FLOOR FOR FLOOR DRAIN OR
RECESSED 1-1/4" INTO HUB FOR COMBO HUB/FLOOR DRAIN

| Size | Part No. | Description | Price |
|------|--------------|---|-------|
| 2" | P23FHDRS-SSW | 2" X 3" Hub Drain w/ recess strainer & wrap | 29.35 |
| 2" | P23FHDS-SSW | 2" X 3" Hub Drain w/ flush strainer & wrap | 29.35 |
| 2" | P24FHDRS-SSW | 2" X 4" Hub Drain w/ recess strainer & wrap | 37.85 |
| 2" | P24FHDS-SSW | 2" X 4" Hub Drain w/ flush strainer & wrap | 37.85 |
| 3" | P34FHDRS-SSW | 3" X 4" Hub Drain w/ recess strainer & wrap | 47.20 |
| 3" | P34FHDS-SSW | 3" X 4" Hub Drain w/ flush strainer & wrap | 47.20 |

FURNISH THE DEPTH OF THE CONCRETE WHEN ORDERING

H = 6" replace 6" with your concrete slab size


 W.H. Directory Reference 01 Edition
 Firestop Device
 W.H. Design No. PS/PH 120-07
 F Rating 2 & 3 Hrs.



PROSET[®]
SYSTEMS
 FIRESTOP PENETRATOR[™]

DATE :
 5-31-21
 DRG . NO .
 C-6120-Ap