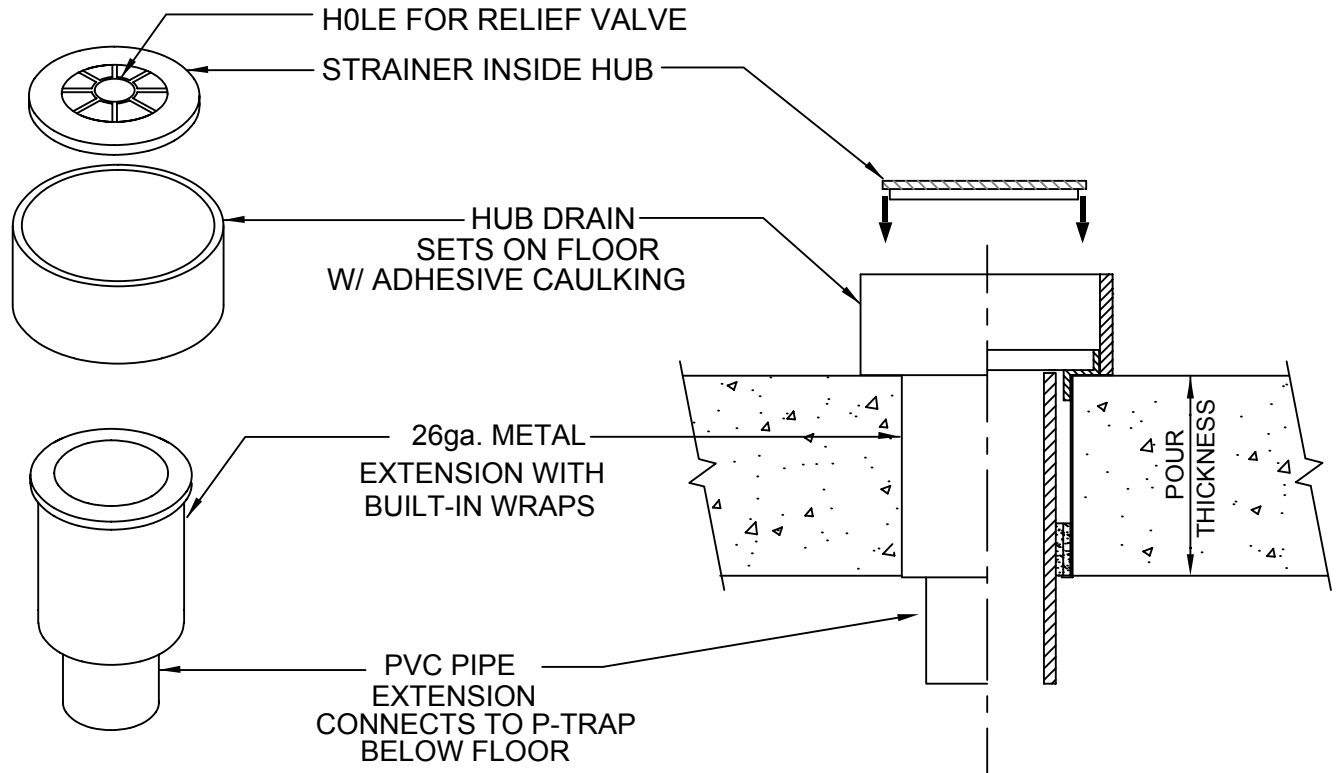


HUB/FLOOR COMBO DRAIN ASSEMBLY

FOR CORED HOLES THROUGH CONCRETE FLOORS



SEE DRAWINGS C-6320-A & B FOR INSTALLATION IN
POURED IN PLACE CONCRETE FLOORS.

IMPORTANT NOTES:

1. Core a 3" hole with a 2" PVC drain extension through the floor to a P-Trap.
2. Insert the Hub drain into the cored hole, use adhesive caulk under the hub for waterproofing.
3. Connect the PVC P-Trap to the extended pipe to complete the installation.

NOTE: The hub portion can be cut down into the concrete floor if necessary



W.H. Directory Reference 99 Edition
Firestop Device
W.H. Design No. PS/PH 120-07
F Rating 2 Hrs.



PROSET[®]
SYSTEMS
FIRESTOP PENETRATOR™

DATE :

5-31-21

DRG . NO .
C-6120-D