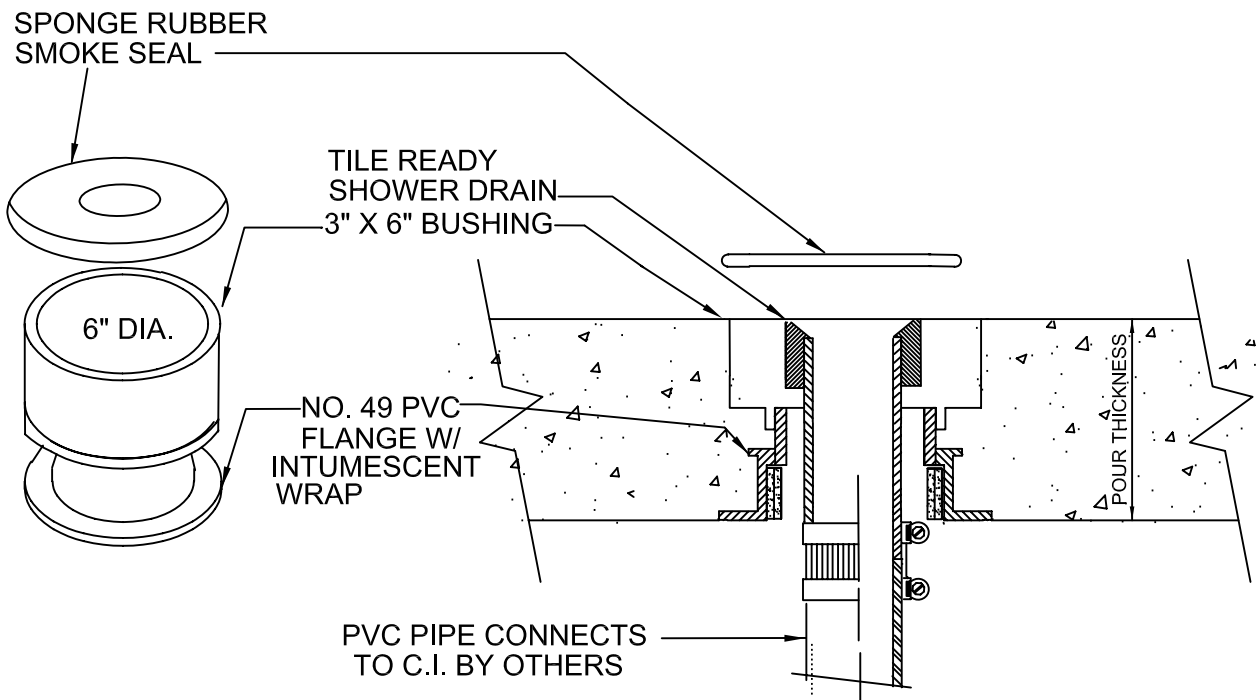


T-RITE TILE READY SHOWER DRAIN

CONCRETE ON WOOD FORM
FOR FLOORS



SEE DRAWING T-6330-C FOR METAL DECKS & T-6330-D FOR CORED HOLES.

IMPORTANT NOTES FOR CAST IRON:

1. Use nails through the special fastening flange holes to mount the # 49 flange to deck.
2. Solvent cement the floor drain base to the 3" X 6" bushing to the proper pour height.
3. Set the Tile Ready pan and solvent cement the 2" PVC extension pipe to the drain.
4. Connect the PVC with a transitional no-hub couling to the cast iron pipe just below the intumescent material.
5. Place the 7" X 3" sponge rubber smoke seal between the precast drain and the hub opening.



W.H. Directory Reference 08 Edition
Firestop Device
W.H. Design No. PS/PHV 180-03
F Rating 3 Hrs.



PROSET[®]
SYSTEMS
FIRESTOP PENETRATOR™

DATE :
1-10-12

DRG . NO .
T-6335-ATR