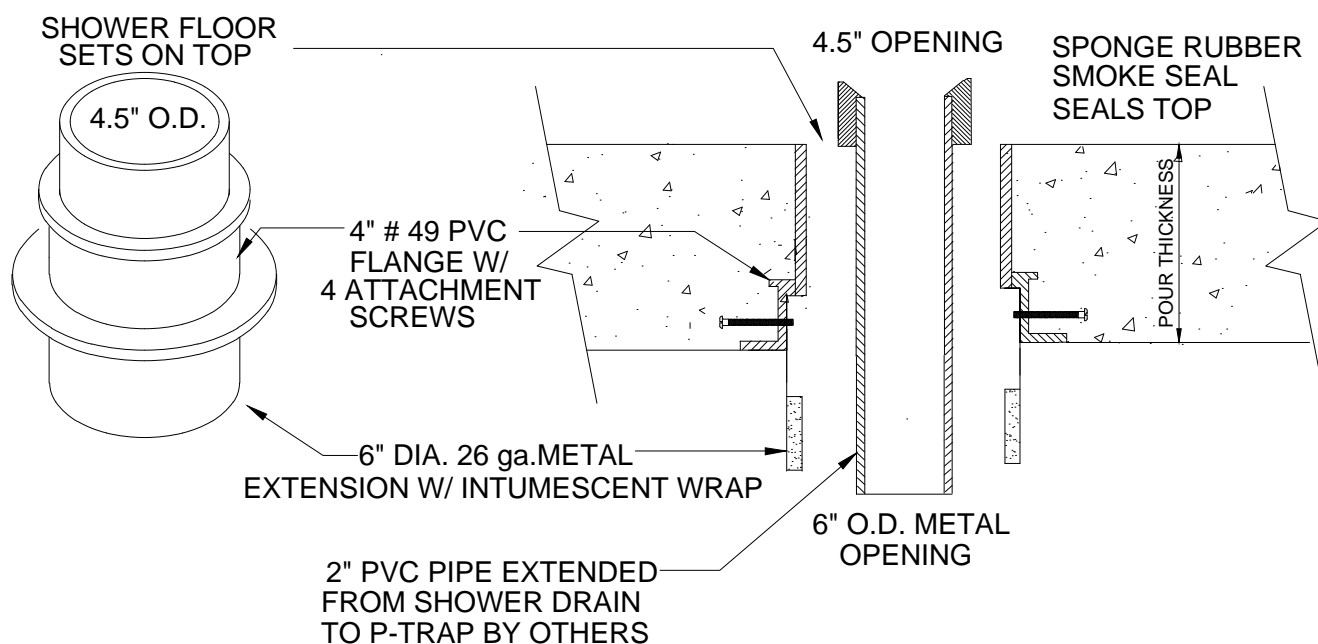


T-RITE PRECAST SHOWER FLOOR

CONCRETE ON WOOD FORM
FOR FLOORS



SEE DRAWING T-6330-C FOR METAL DECKS & T-6330-D FOR CORED HOLES.

IMPORTANT NOTES :

1. Use nails through the #49 flange holes to fasten at the center point of the precast shower drain.
2. After the concrete is poured remove the protective cap from the top of the sleeve.
3. Set the Precast shower floor over the sleeve opening and solvent cement the 2" PVC extension pipe through the bottom of the sleeve.
4. Connect the metal extension below by using the slots in the extension and turn clockwise to lock the metal into the four screws to secure the extension to the embedded coupling.
5. Place the 7" X 3" sponge rubber smoke seal between the precast drain and the hub opening.
6. Solvent cement the 2" PVC pipe extension to connect the P-Trap to finish the installation.



W.H. Directory Reference 08 Edition
Firestop Device
W.H. Design No. PS/PH 120-18
F & T Rating 2 Hrs.



PROSET[®]
SYSTEMS
FIRESTOP PENETRATOR™

DATE :

12-4-13

DRG . NO .

T-6330-ASF