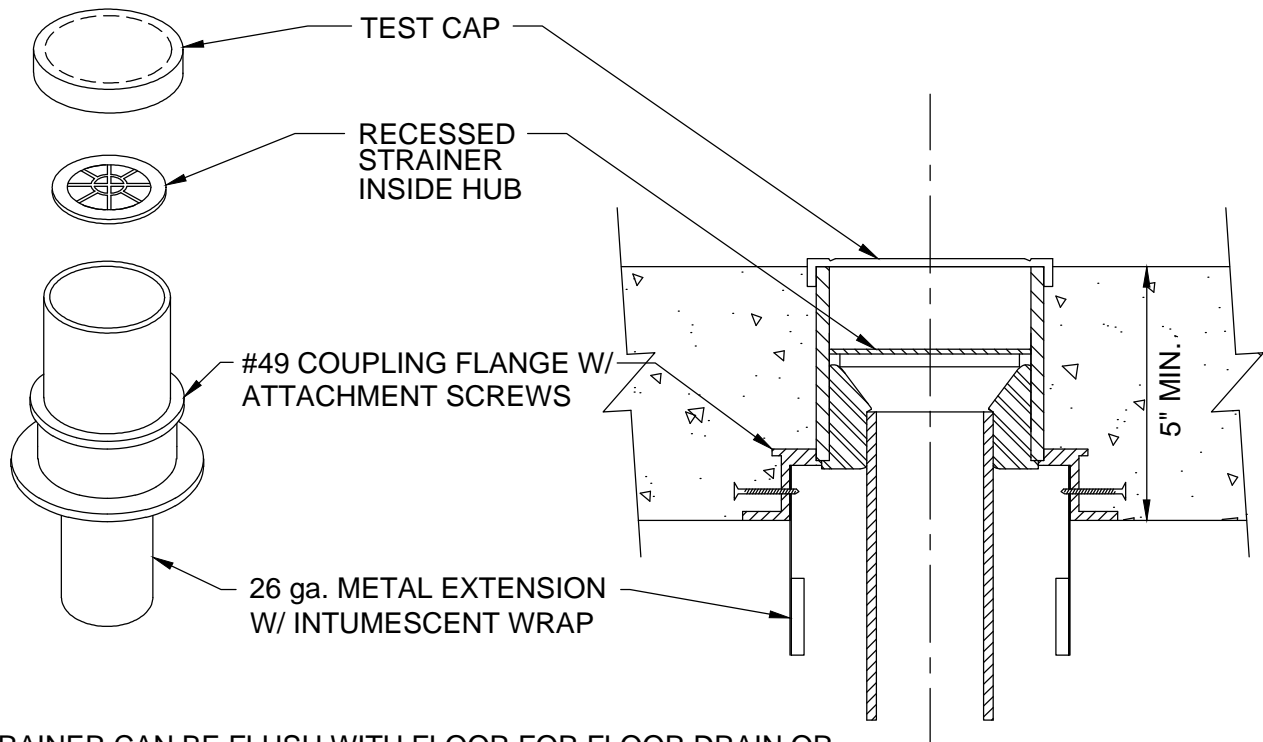


T-RITE HUB/FLOOR DRAIN

CONCRETE ON WOOD OR STEEL FORM
FOR UTILITY ROOM FLOORS



STRAINER CAN BE FLUSH WITH FLOOR FOR FLOOR DRAIN OR
RECESSED INTO HUB FOR COMBO HUB/FLOOR DRAIN

IMPORTANT NOTES:

1. Use nails or pop rivets through the fastening flange holes to mount the self-seal flange to the deck.
2. The drain comes with a hard test cap solvent cemented to the top for water testing when required.
3. After the concrete pour connect the metal extension by using the slots in the extension and turn clockwise to lock the metal into the four screws to secure the extension into the embedded coupling.
4. Solvent cement the 2" PVC pipe into the socket that is up inside the sleeve to the proper length to connect the P-Trap to the drain.
5. Knock out the test cap to complete the drain opening.

 W.H. Directory Reference 08 Edition
Firestop Device
W.H. Design No. PS/PH 120-18
F Rating 2 or 3 Hrs.



PROSET[®]
SYSTEMS
FIRESTOP PENETRATOR™

DATE :

7-22-15

DRG . NO .

T-6123-TR