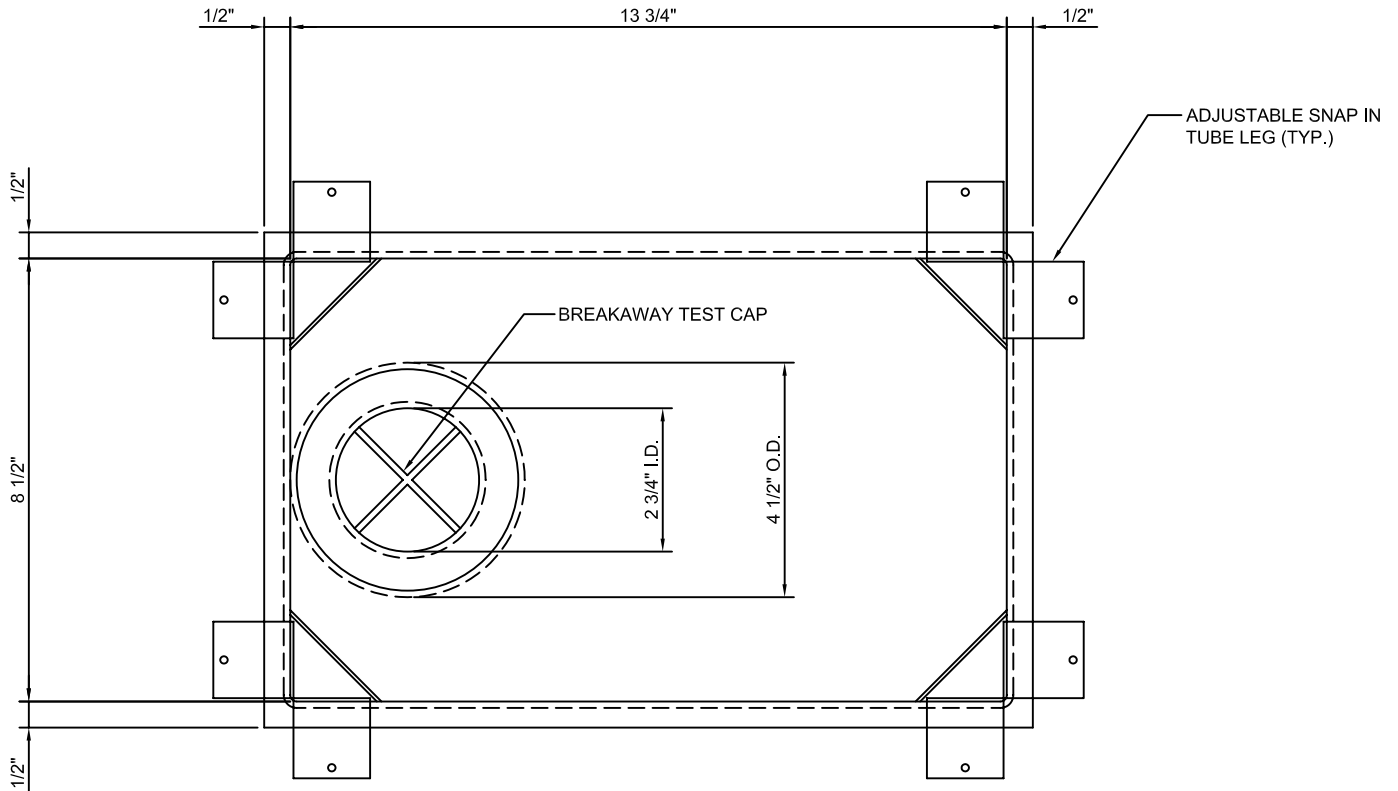
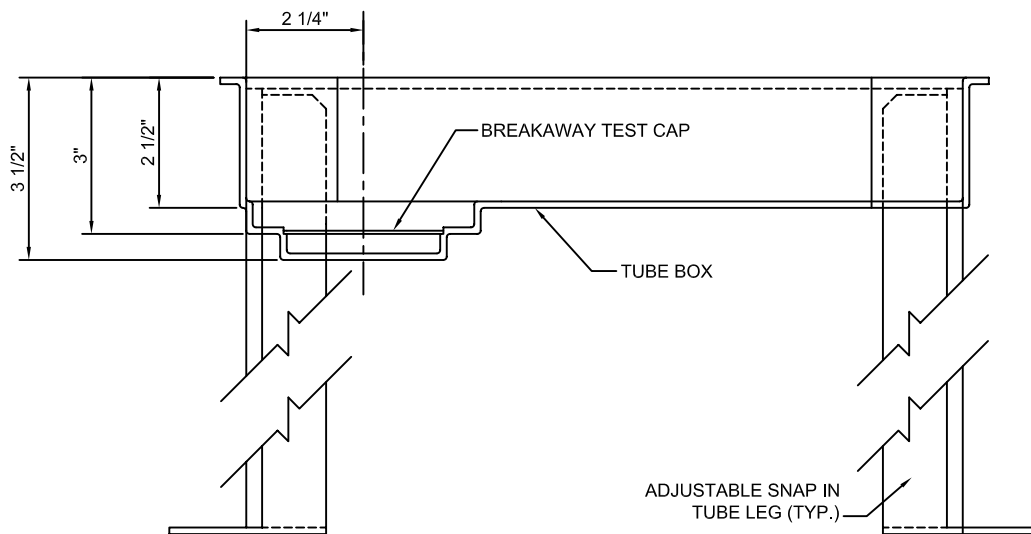


TUB BOX ASSEMBLY



Material for box is high impact polystyrene.
Material for adjustable legs is polypropylene



FUNCTION OF COMPONENT

- * Provides for a recess in the concrete floor to connect a waste & overflow assembly from bathtub openings
- * Extra styrofoam can be used inside the box to lower the recess.



PROSET[®]
SYSTEMS
FIRESTOP PENETRATOR™

DATE :

10-8-03

DWG NO.

P-62