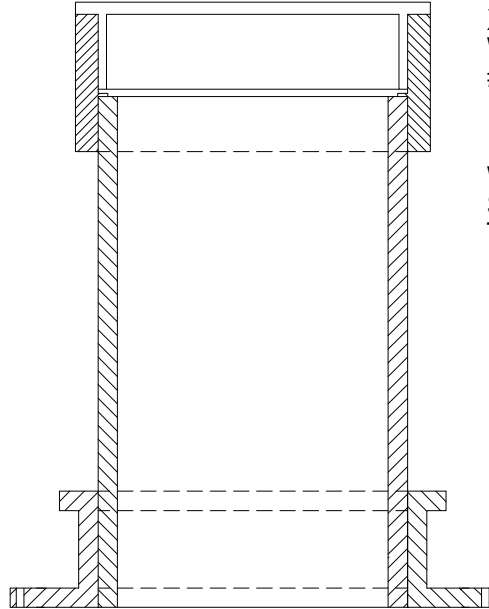


SERIES 43-WC SLEEVE COUPLING WITH COUPLING EXTENSION



XH PROTECTIVE PLUG COMPLIES
WITH OSHA FLOOR OPENING
1910.23 SAFETY REQUIREMENTS

WATERPROOF EXTENSION SLEEVE
SHOULD EXTEND UP 3" ABOVE THE
TOP OF CONCRETE FLOOR

Size	Part No.	Description	Price
2"	P2543H-WC	2" Sleeve W / Cplg.	8.65
3"	P3543H-WC	3" Sleeve W / Cplg.	11.80
4"	P4543H-WC	4" Sleeve W / Cplg.	14.40
5"	P6843H-WC	5" Sleeve W / Cplg.	25.00
6"	P6543H-WC	6" Sleeve W / Cplg.	23.00

4" LONG EXTENSION PIECES

P25404	1.60
P35404	2.00
P45404	3.20
P65404	6.00

FUNCTION OF COMPONENT

This special sleeve coupling is made for waterproofing the pass through pipe and the sleeve coupling while providing the required fire ratings through the floor.



PROSET[®]
SYSTEMS
FIRESTOP PENETRATOR™

DATE :
10-12-05

DRG . NO .
P - 43-WC