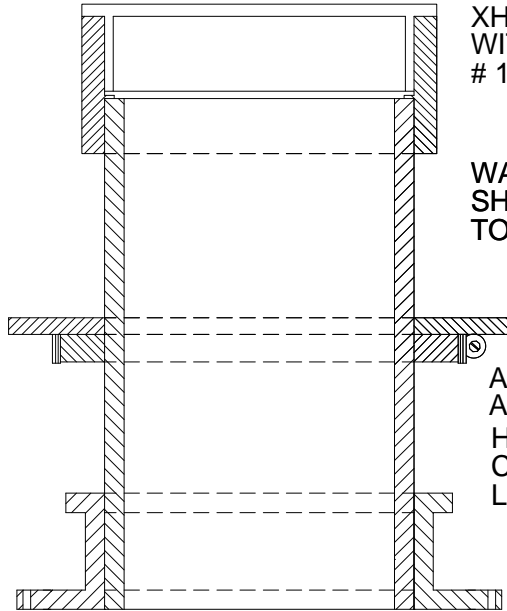


SERIES 43-WCR SLEEVE COUPLING EXTENSION WITH WATERGUARD



XH PROTECTIVE PLUG COMPLIES
WITH OSHA FLOOR OPENING
1910.23 SAFETY REQUIREMENTS

WATERPROOF EXTENSION SLEEVE
SHOULD EXTEND UP 3" ABOVE THE
TOP OF THE CONCRETE FLOOR

ALL SIZES WATERPROOF TESTED IN
A 4-1/2" CONCRETE SLAB FOR 72
HOURS AGAINST A 36" HEAD OF WATER
CERNY & IVEY TESTING ENGINEERS
LABORATORY REPORT NO. 25259

Size	Part No.	Description	Price
2"	P2543H-WCR	2" Sleeve W / C & R	14.65
3"	P3543H-WCR	3" Sleeve W / C & R	18.45
4"	P4543H-WCR	4" Sleeve W / C & R	23.40
5"	P6843H-WCR	5" Sleeve W / C & R	37.30
6"	P6543H-WCR	6" Sleeve W / C & R	35.50

4" LONG EXTENSION PIECES

P25404	1.60
P35404	2.00
P45404	3.20
P65404	6.00

FUNCTION OF COMPONENT

This special sleeve coupling is made for waterproofing both the pass through pipe & the sleeve coupling while providing the required fire ratings through the floor.



PROSET[®]
SYSTEMS
FIRESTOP PENETRATOR™

DATE :
10-12-05

DRG . NO .
P-43-WCR