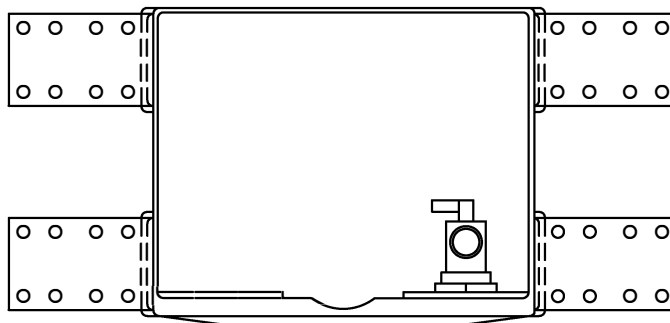


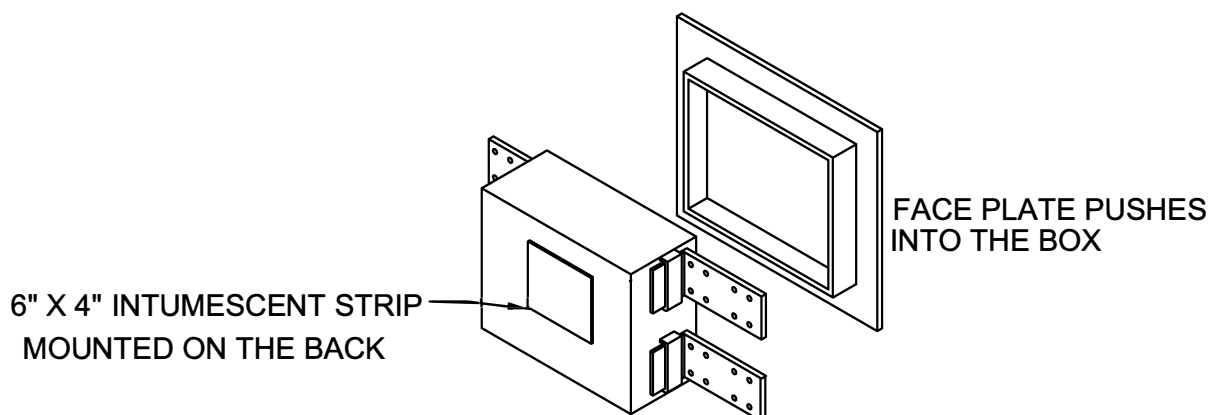
# FIRE GUARD ICE MAKER BOX

FOR ICE MACHINES



## BOX SIZE

8" W X 6" H X 3-1/2" D.



## IMPORTANT INSTALLATION NOTES :

1. Remove all parts from the package. Insert the four mounting brackets into the slots on both sides of the box.
2. Align the ball valve so the spouts point out of the box; tighten lock nut. Connect water supply to valve.
3. The drywall cut out should be as close to the sides of the box as possible. Gaps of 3/8" or less can be filled with regular drywall cement. Gaps larger than 1/2" must be filled with an approved silicone caulk.
4. When the wall surface is completely finished, snap the face plate into the box to complete the installation.



W.H. Directory Reference 05 Edition  
Firestop Device  
W.H. Design No. PS/PV 120-08  
F Rating 1 Hr. or 2 Hrs. Walls



**PROSET**<sup>®</sup>  
**SYSTEMS**  
FIRESTOP PENETRATOR™

DATE :  
5-31-21

DRG . NO .  
C-8123-F