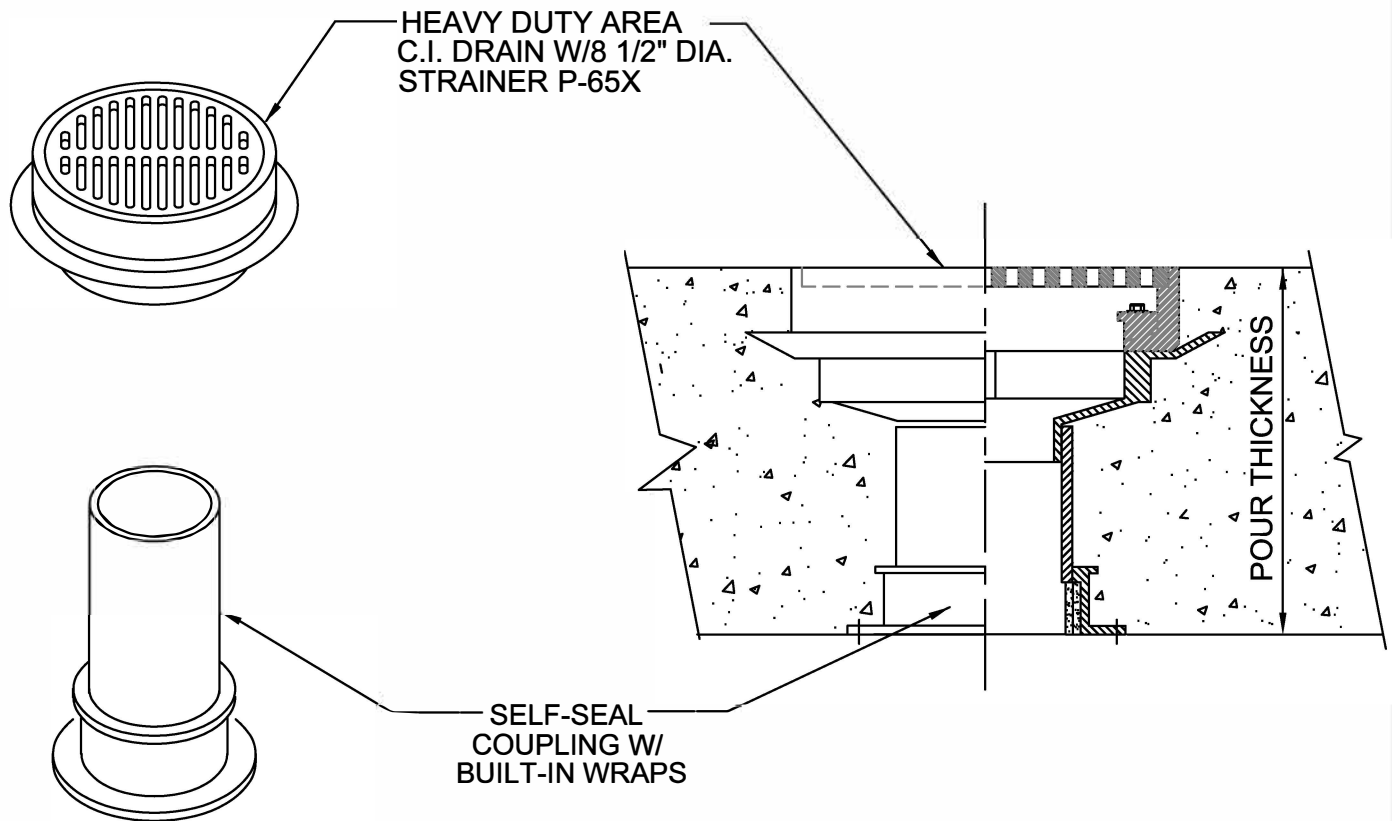


# HEAVY DUTY FLOOR DRAIN SLEEVE ASSEMBLY

CONCRETE ON WOOD OR STEEL FORM FOR FLOORS



## IMPORTANT NOTES:

1. Order the floor drain stub height to reflect the amount of pitch of concrete to the drain top.  
1/2" pitch requires ordering the drain stub 1/2" shorter than the pour.
2. Use nails through the flange holes to mount the self seal stub to the deck.
3. Solvent cement the heavy duty drain onto the top of the drain stub.
4. After the concrete pour, connect the plastic pipe to the bottom of the self seal stub.



W.H. Directory Reference 97 Edition  
Firestop Device  
W.H. Design No. PS/PH 120-07  
F Rating 2 Hrs.



**PROSET**<sup>®</sup>  
**SYSTEMS**  
FIRESTOP PENETRATOR™

DATE :

5-31-21

DRG . NO .

C-6510X-A