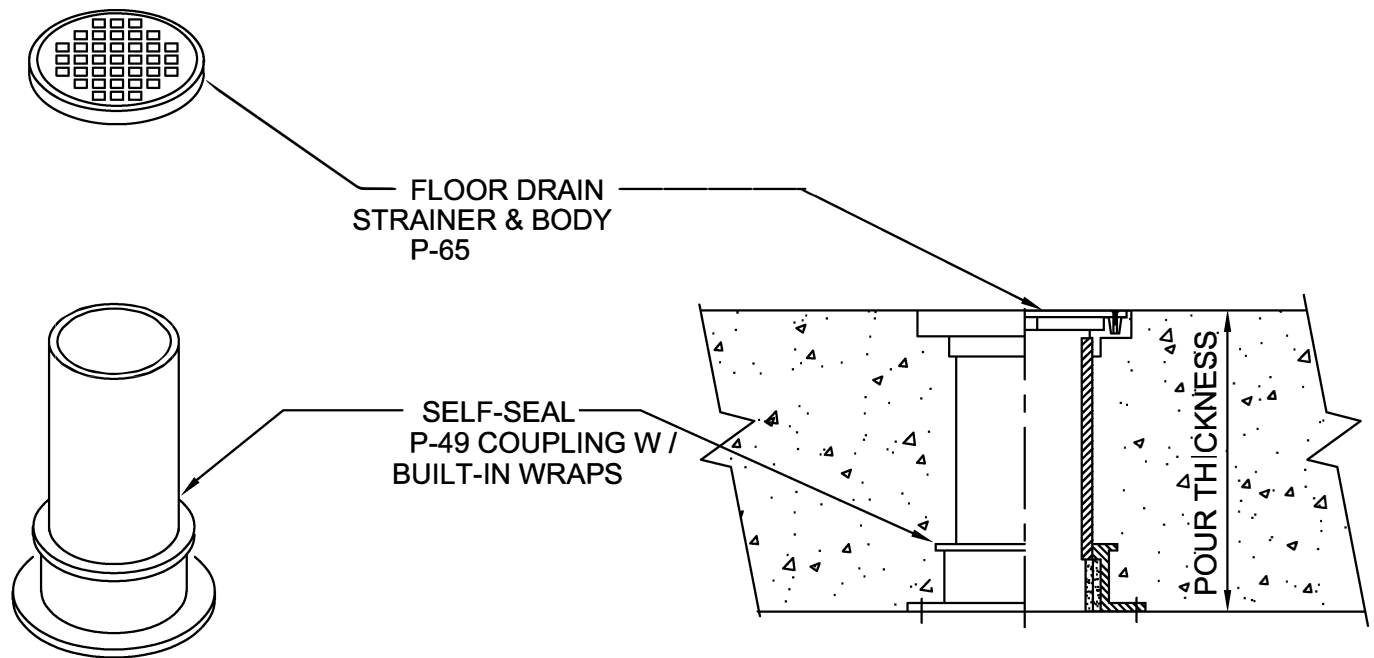


FLOOR DRAIN SLEEVE ASSEMBLY

CONCRETE ON WOOD FORM
FOR FLOORS



IMPORTANT NOTES:

1. Order floor drain stub height to reflect the amount of pitch of concrete to the drain.
1/2" pitch requires ordering drain stub 1/2" shorter than the pour.
2. Use nails through the flange holes to mount the self-seal flange to the deck.
3. Use duct tape over the top of strainer to protect during the concrete pour.
4. Solvent weld the top strainer assembly onto the top of the drain stub.
5. After the concrete pour, connect plastic pipe and trap to the bottom of the drain stub and complete the installation.



W.H. Directory Reference 97 Edition
Firestop Device
W.H. Design No. PS/PH 120-07
F Rating 2 Hrs.



PROSET[®]
SYSTEMS
FIRESTOP PENETRATOR™

DATE :
5-31-21

DRG . NO .
C-6510-A