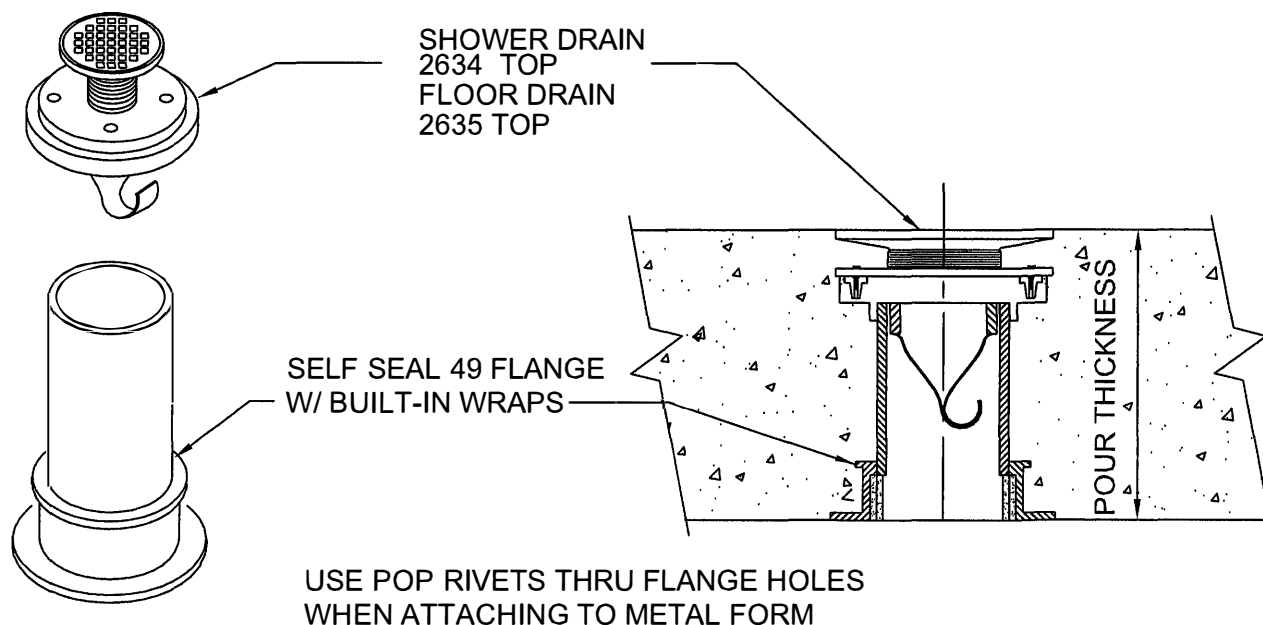


TRAP GUARD SHOWER/FLOOR DRAIN ASSEMBLY

CONCRETE ON WOOD OR STEEL FORM
FOR FLOORS



SEE COMPONENT DETAIL P-63 FOR STRAINER OPTIONS

Size	Part No.	Description	Price	Top Size
2"	T2563H-S/ F-SSW W/ Built-in T.G.	2" Shower/Floor Drain With built-in Wrap Strips	124.05	4.25"
2"	T2563H-F-SSW W/ Built-in T.G.	2" Floor Drain With built-in Wrap Strips	124.05	5"
3"	T3563H-F-SSW W/ Built-in T.G.	3" Floor Drain With built-in Wrap Strips	143.40	5"
4"	T4563H- F-SSW W/ Built-in T.G.	4" Floor Drain With built-in Wrap Strips	159.15	5"

-S After part number is for Shower Drain. -F After part number is for Floor Drain
The Shower Drain extends above the floor - The Floor Drain is flush with the floor

ALL STRAINERS ARE CHROME FINISH- CALL THE FACTORY FOR PRICING ON OTHER
TYPES AND FINISHES.



W.H. Directory Reference 01 Edition
Firestop Device
W.H. Design No. PS/PH 120-07
F Rating 2 & 3 Hrs.



PROSET[®]
SYSTEMS
FIRESTOP PENETRATOR™

DATE :
5-31-21

DRG . NO .
C-6331-ATGp