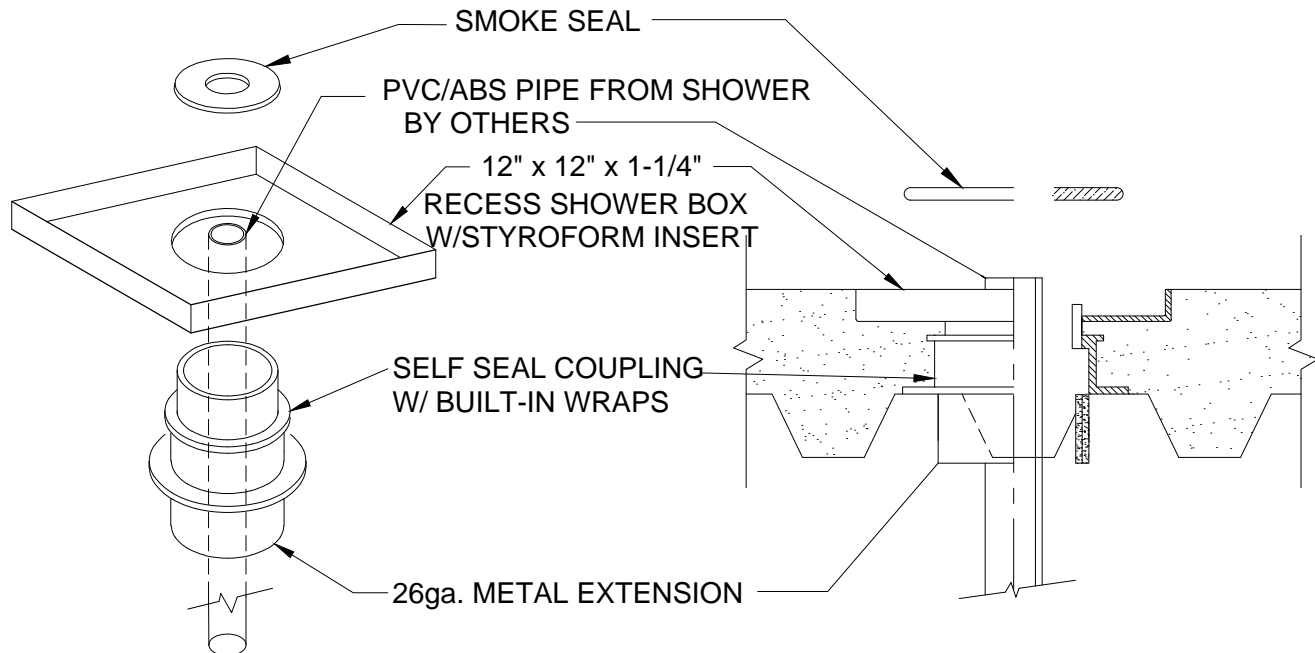


PRECAST SHOWER SLEEVE ASSEMBLY

CONCRETE ON CORRUGATED METAL DECK
FOR FLOORS



IMPORTANT NOTES:

1. Cut a 6" hole through the corrugated metal deck to accommodate the 26 gauge metal extension to the bottom of the corrugations.
2. Mount the # 49 flange to the corrugated metal with sheet metal screws. If necessary use a right angle metal strip, S-34348, to span the corrugations.
3. After the pour, remove styroform insert from box and install the smoke ring over the opening.
4. Set the precast shower with built-in drain over the sleeve opening.
5. Connect the precast shower drain pipe through the 4" corrugated sleeve to the 2" P-Trap.



W.H. Directory Reference 99 Edition
Firestop Device
W.H. Design No. PS/PH 120-14
F Rating 2 Hrs.



PROSET[®]
SYSTEMS
FIRESTOP PENETRATOR™

DATE :

5-31-21

DRG . NO .

C-61-CSF