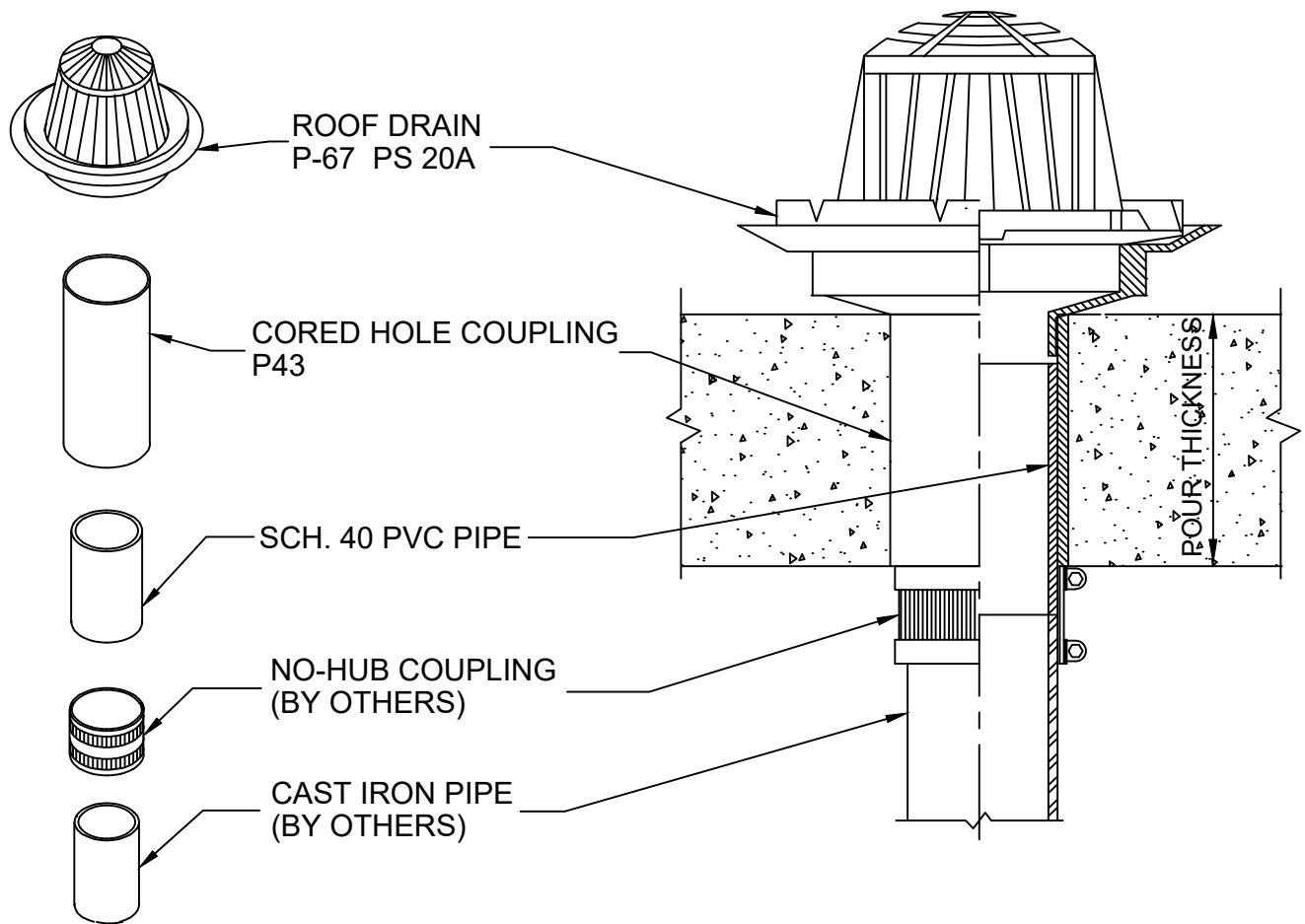


ROOF DRAIN STUB

PRECAST CONCRETE OR EXISTING CONCRETE



IMPORTANT NOTES :

1. Core a 3" hole for a 2" drain, a 4" hole for a 3" drain and a 5" hole for a 4" Roof Drain.
2. Install a bead of ProSet Caulk around the roof drain body for waterproofing.
3. Insert the cored hole coupling into the cored hole from the top.
- * 4. Solvent weld the P90 pipe and connect the EZ No Hub coupling.
5. Connect the cast iron pipe into the EZ No Hub coupling & tighten S.S. band.

Note: The Roof Drain with an attached sleeve coupling can be inserted from the top side with a #43 Mounting Flange cemented onto the sleeve coupling extension to fit tight against the ceiling so the Roof Drain is anchored into slab to prevent expansion/contraction problems.

* See E-Z Flex installation instruction sheet.



W.H. Directory Reference 99 Edition
Firestop Device
W.H. Design No. PS/PH 120-02
F Rating 2 Hrs.



PROSET[®]
SYSTEMS
FIRESTOP PENETRATOR™

DATE :
05-31-21
DRG . NO .
B-6700-D