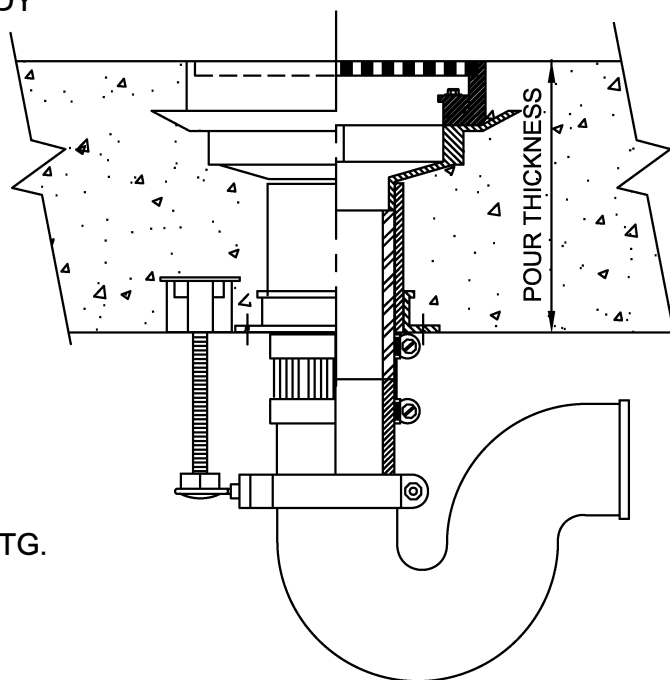
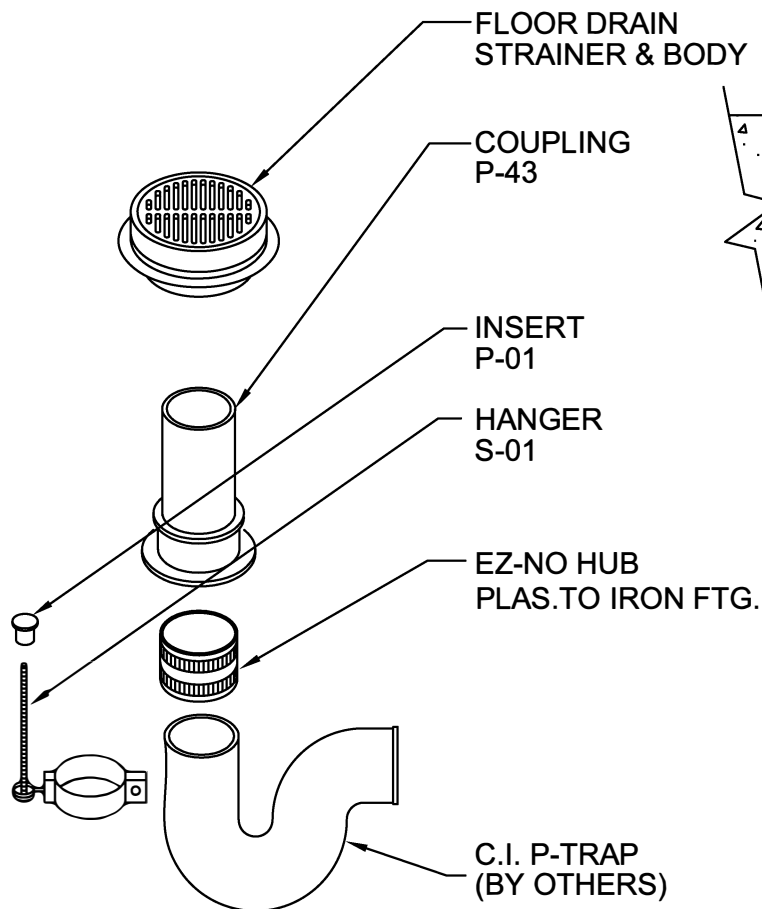


# FLOOR DRAIN FITTING ASSEMBLY

CONCRETE ON WOOD FORM  
FOR FLOORS



NOTE: USE PROSET'S P-90 HI-TEMP PVC TO CONNECT THE DRAIN TO THE TRAP

## IMPORTANT NOTES :

1. Order floor drain stub height to reflect the amount of pitch of concrete to the drain - 1/2" pitch requires ordering drain 1/2" shorter than the pour.
2. Use duct tape over the top of floor drain to protect during concrete pour.
3. Use nails through flange holes to mount the floor drain to the deck.
4. Set the P-01 insert abutting against the mounting flange.
5. Insert & solvent weld the proper length P-90 pipe into the bottom of coupling.
6. Connect the P-Trap to the P-90 fitting using a transitional no-hub coupling.
7. Install the S-01 hanger to the P-Trap in a secure manner.



W.H. Directory Reference 99 Edition  
Firestop Device  
W.H. Design No. PS/PH 120-02  
F Rating 2 Hrs.



**PROSET**<sup>®</sup>  
**SYSTEMS**  
FIRESTOP PENETRATOR™

DATE :  
5-31-21

DRG . NO .  
B-6510X-A