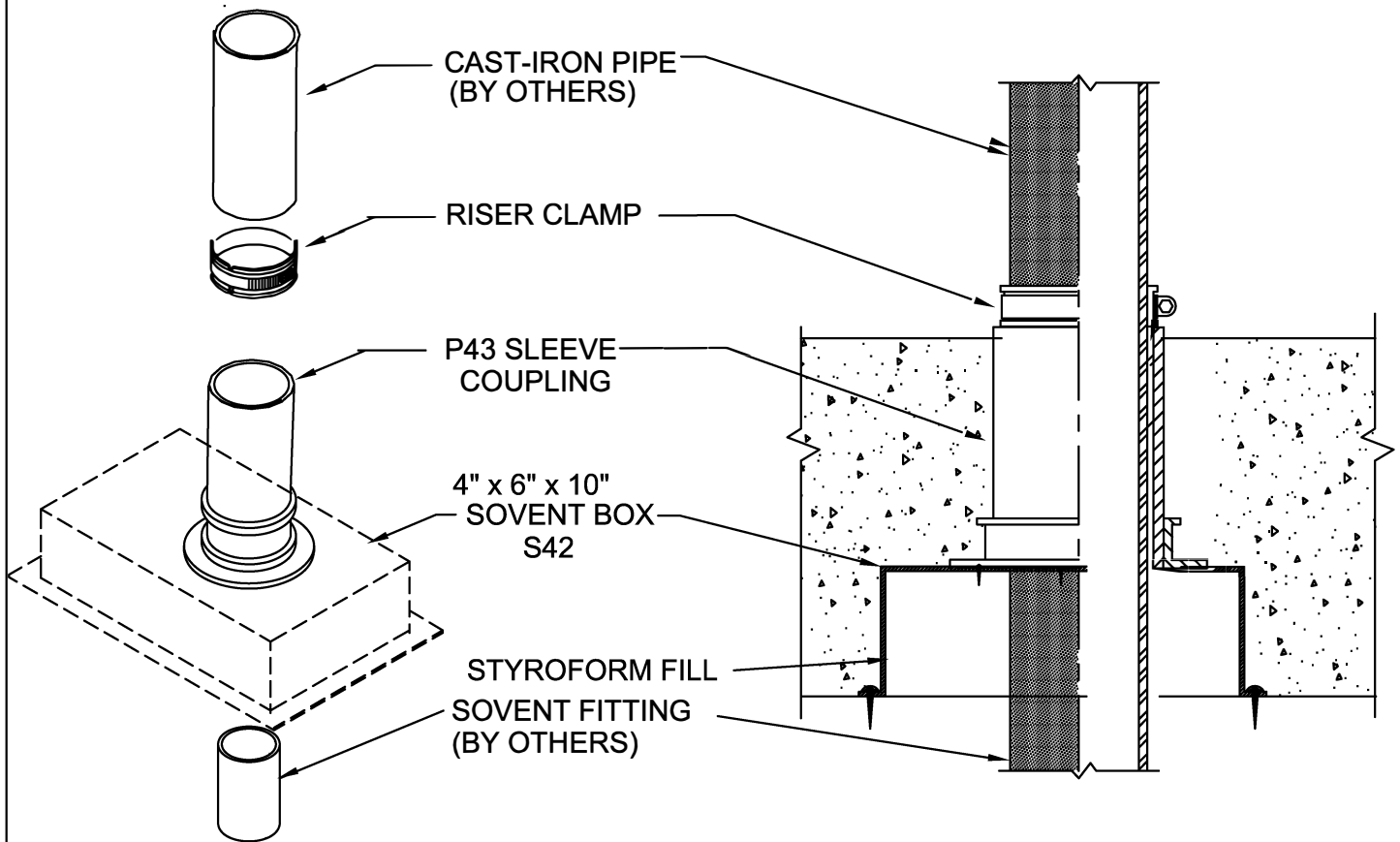


# PASS-THRU AERATOR RECESS ASSEMBLY

POURED CONCRETE ON WOOD FORM  
FOR FLOORS



## IMPORTANT NOTES :

1. Use nails through flange holes to mount the sleeve coupling to the deck.
2. After concrete is poured, remove protective cap.
3. Install the pass through pipe through the sleeve.
4. Install the Riser Clamp on the top side to draft stop and support the pass through pipe.



W.H. Directory Reference 99 Edition  
Firestop Device  
W.H. Design No. PS/PHV 180-01  
F Rating 3 Hrs.



**PROSET**<sup>®</sup>  
**SYSTEMS**  
FIRESTOP PENETRATOR™

DATE :  
5-31-21  
DRG . NO .  
B-4814-A