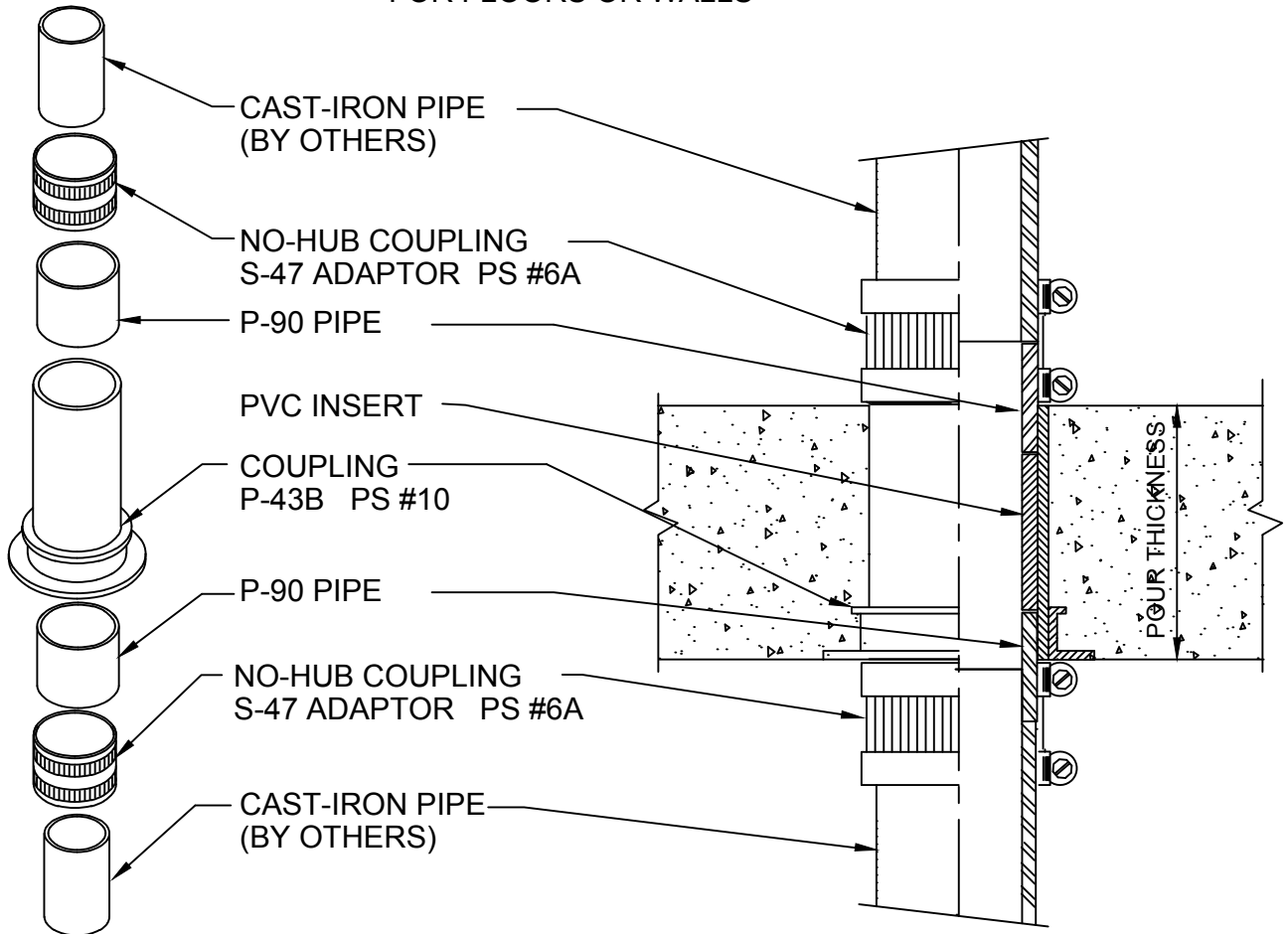


WATERPROOF C.I. STACK STUB

POURED CONCRETE ON WOOD FORM
FOR FLOORS OR WALLS



Size	Part No.	Description	Price	Unit Total
2"	P2548H	2" Stack Stub	7.65	
2"	P25902 (2)	2" P-90 F.R. Nipple	1.30	
2"	S25470 (2)	2" E-Z No-Hub Coupling	7.05	16.00
3"	P3548H	3" Stack Stub	10.50	
3"	P35903 (2)	3" P-90 F.R. Nipple	2.85	
3"	S35470 (2)	3" E-Z No-Hub Coupling	11.20	24.55
4"	P4548H	4" Stack Stub	13.10	
4"	P45904 (2)	4" P-90 F.R. Nipple	3.90	
4"	S45470 (2)	4" E-Z No-Hub Coupling	16.40	33.40
6"	P6548H	6" Stack Stub	20.10	
6"	P65906 (2)	6" Sch.80 F.R. Nipple	16.50	
6"	S65470 (2)	6" E-Z No-Hub Coupling	76.00	112.60



W.H. Directory Reference 97 Edition
Firestop Device
W.H. Design No. PS/PHV 120-06
F Rating 2 Hrs.



PROSET[®]
SYSTEMS
FIRESTOP PENETRATOR™

DATE :
08-01-18
DRG . NO .
B-4806-A/B