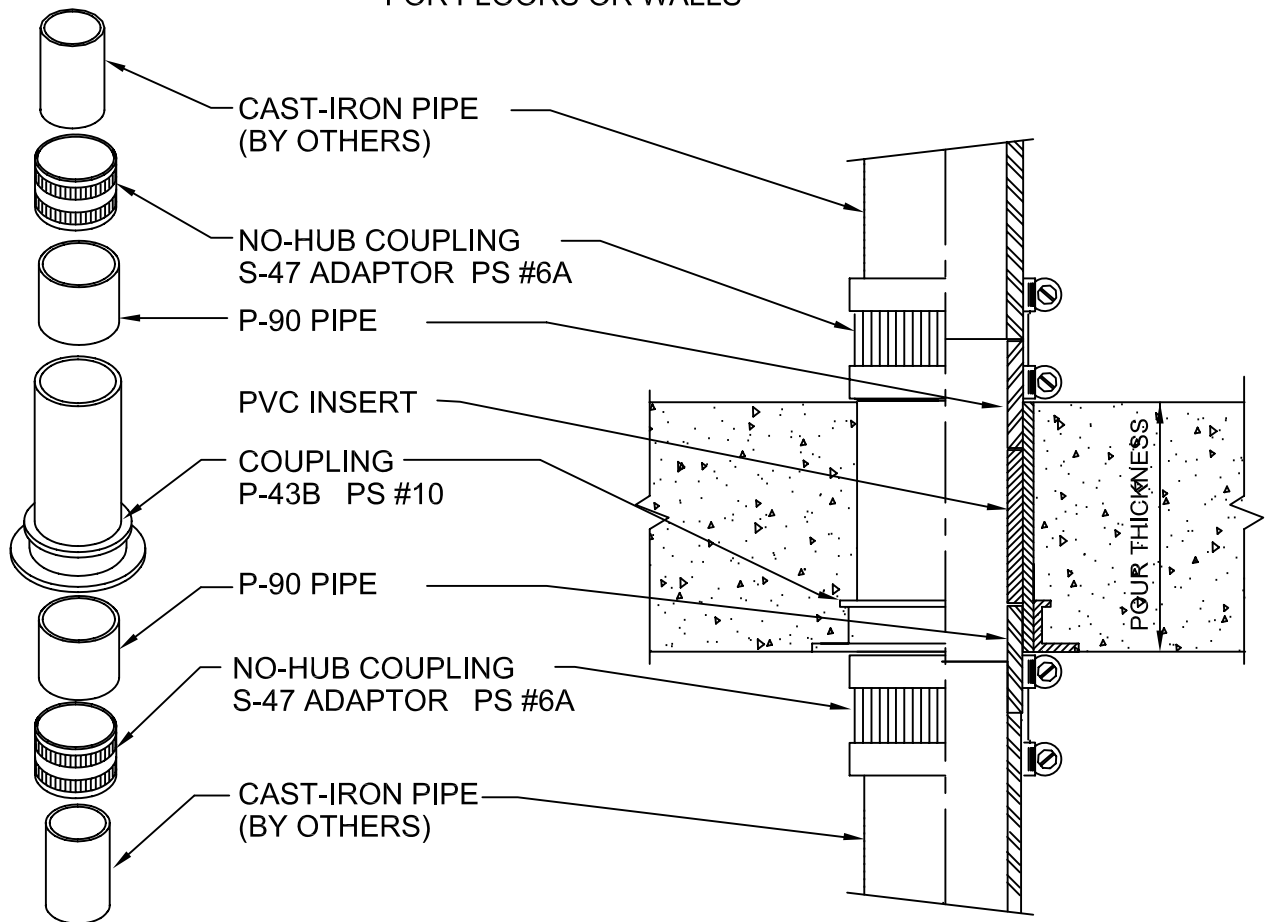


WATERPROOF C.I. STACK STUB

POURED CONCRETE ON WOOD FORM
FOR FLOORS OR WALLS



IMPORTANT NOTES:

1. Use nails or pop-rivets through the holes to mount the sleeve to the wood or metal form.
2. After the concrete pour, remove protective cap and solvent weld the special Hi-temp P-90 PVC pipe stub-outs into the sockets of the embedded sleeve coupling.
3. Install the S-47 No-hub adaptor mechanical joint couplings to connect the cast iron pipe to the plastic P-90 pipe on top and bottom. When using 6" cast iron use 6" Sch. 80 PVC.

Note: This optional stack assembly is intended to provide a positive waterproof penetration.



W.H. Directory Reference 97 Edition
Firestop Device
W.H. Design No. PS/PHV 120-06
F Rating 2 Hrs.



PROSET[®]
SYSTEMS
FIRESTOP PENETRATOR™

DATE :
1-10-06

DRG . NO .
B-4806-A/B