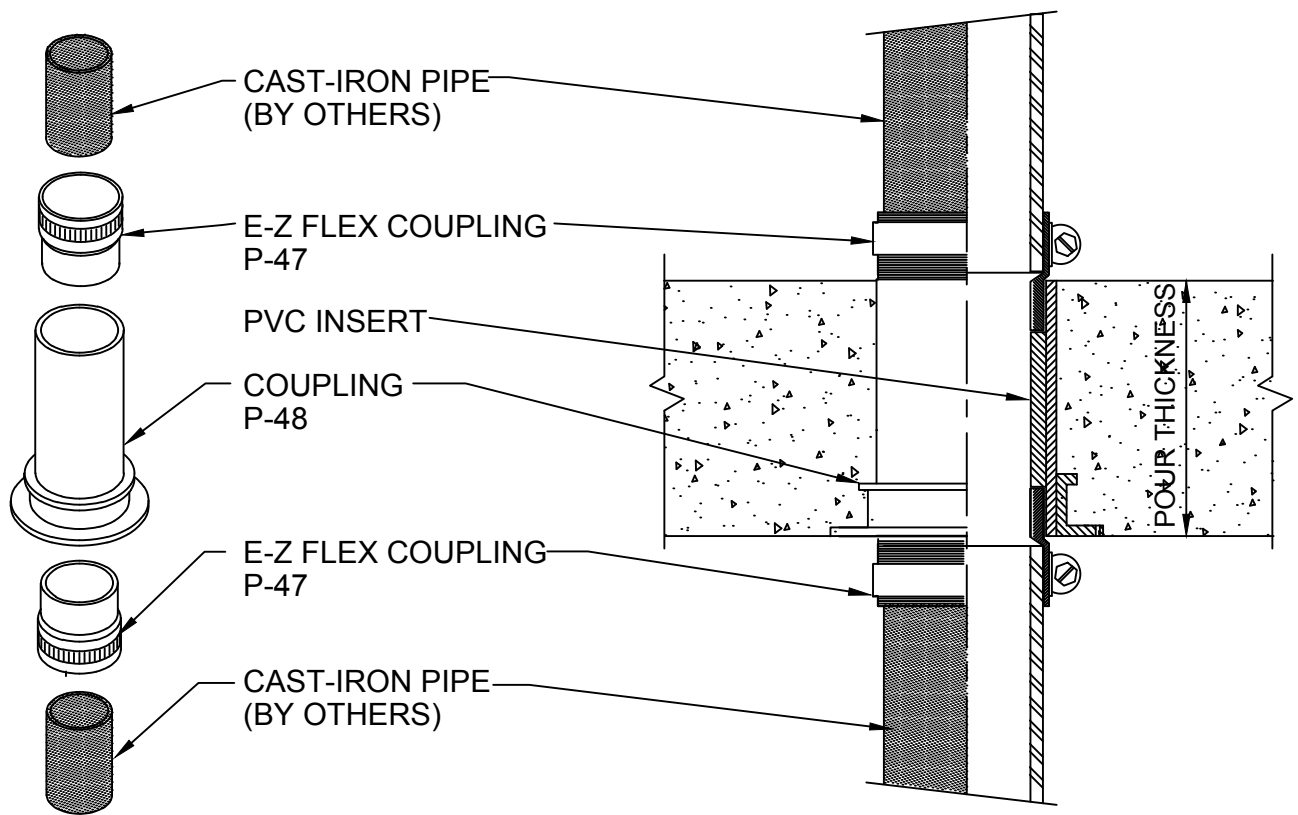


C.I. STACK STUB - OPTION 5

CONCRETE ON TUNNEL OR PAN FORMS
FOR FLOORS OR WALLS



SEE DRAWING B-4804-C OR D FOR INSTALLATION
IN CORRUGATED METAL OR EXISTING CONCRETE

| Size | Part No. | Description | Price | Unit Total |
|------|------------|----------------------|-------|------------|
| 2" | P2548H | 2" Stack Stub | 7.65 | |
| 2" | P25470 (2) | 2" E-Z Flex Coupling | 8.80 | |
| | | | | 16.45 |
| 3" | P3548H | 3" Stack Stub | 10.50 | |
| 3" | P35470 (2) | 3" E-Z Flex Coupling | 9.70 | |
| | | | | 20.20 |
| 4" | P4548H | 4" Stack Stub | 13.10 | |
| 4" | P45470 (2) | 4" E-Z Flex Coupling | 13.00 | |
| | | | | 26.10 |



W.H. Directory Reference 97 Edition
Firestop Device
W.H. Design No. PS/PHV 120-01
F Rating 2 Hrs.



PROSET[®]
SYSTEMS
FIRESTOP PENETRATOR™

DATE :
08-06-2018
DRG . NO .
B-4805-A