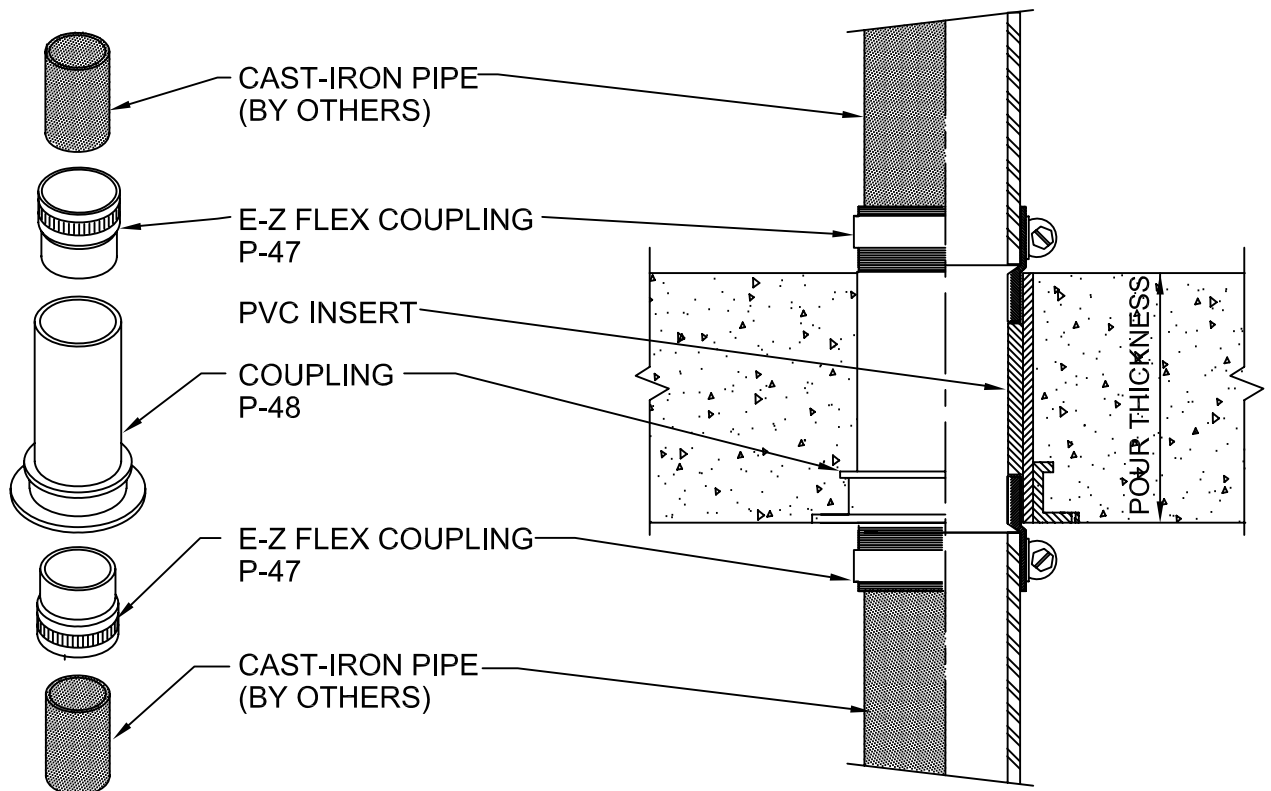


C.I. STACK STUB - OPTION 5

CONCRETE ON TUNNEL OR PAN FORMS
FOR FLOORS OR WALLS



SEE DRAWING B-4804-C OR D FOR INSTALLATION
IN CORUGATED METAL OR EXISTING CONCRETE.

IMPORTANT NOTES :

1. Use nails through flange holes to mount the sleeve coupling to the deck.
2. After concrete is poured, remove protective cap.
3. Insert & Solvent weld the E-Z Flex into the top & bottom of coupling.(See E-Z Flex instructions.)
4. Connect other no-hub pipe or fitting into the E-Z Flex couplings.s

Option 5 : Use when connecting fittings need to be close to the ceiling and floor. E-Z Flex couplings are the easiest for connecting pipes & fittings.



W.H. Directory Reference 97 Edition
Firestop Device
W.H. Design No. PS/PHV 120-01
F Rating 2 Hrs.



PROSET[®]
SYSTEMS
FIRESTOP PENETRATOR™

DATE :
1-10-06

DRG . NO .
B-4805-A