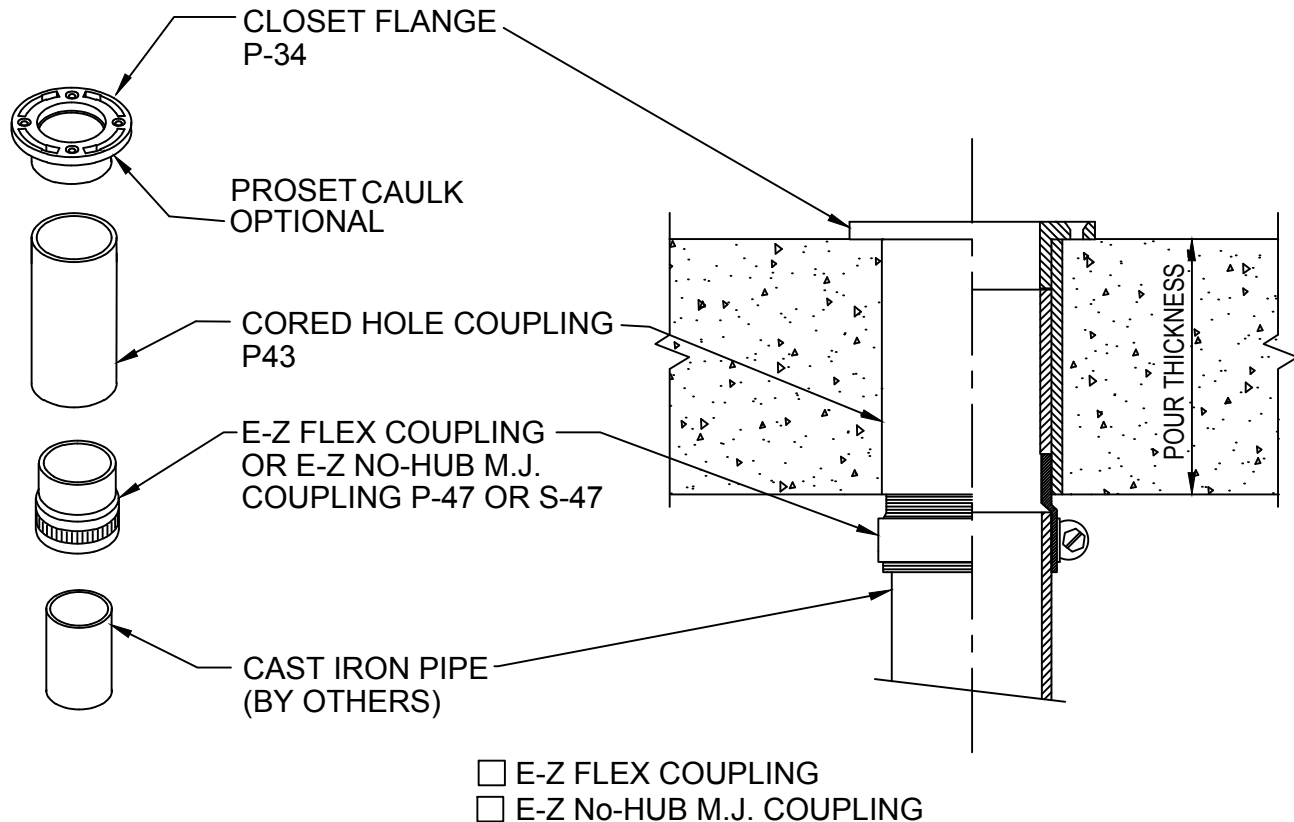


# PROSEAL CLOSET STUB

CORED HOLES OR EXISTING CONCRETE



## IMPORTANT NOTES :

1. Core a 4" hole for a 3" closet stub & a 5" hole for a 4" closet flange and stub .
2. Before inserting the stub into the hole install a bead of ProSet Caulk under the flange to waterproof.
3. Insert the closet flange into the hole with the EZ Flex and anchor the flange to the concrete floor.
4. Connect the cast iron closet bend to the EZ Flex coupling. After water test, knock out the test cap and set the water closet using a wax ring and closet bolts.

\* See E-Z Flex installation instructions.



W.H. Directory Reference 01 Edition  
Firestop Device  
W.H. Design No. PS/PH 120-15  
F Rating 2 & 3 Hrs.



**PROSET**<sup>®</sup>  
**SYSTEMS**  
FIRESTOP PENETRATOR™

DATE :  
7-30-15  
DRG . NO .  
B-3401-D