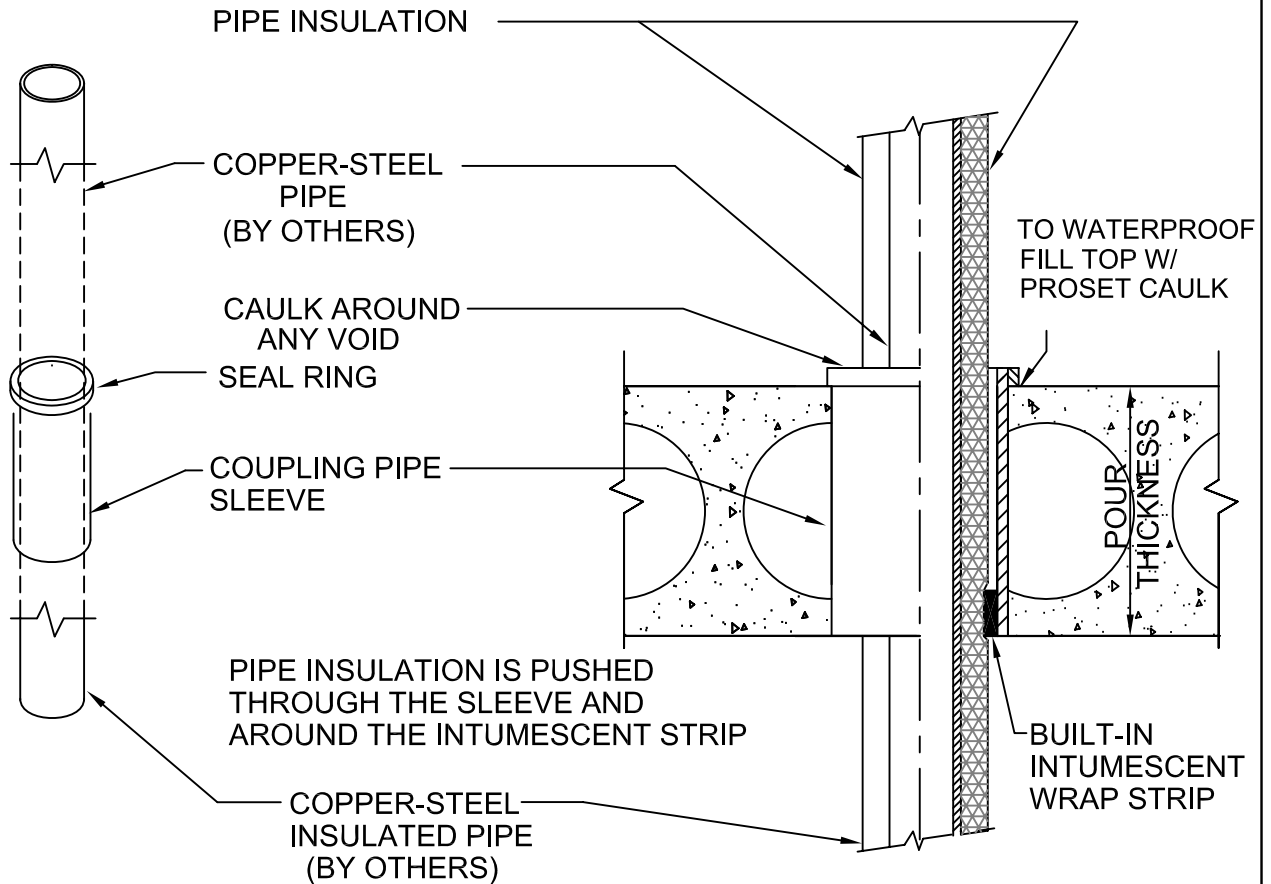


# RISER CLAMP DEVICE

PRECAST CONCRETE OR EXISTING CONCRETE  
FOR FLOORS



## IMPORTANT NOTES

1. Core a 2 3/4" hole for a 2.50" dia.- 4" hole for a 3.70" - 5" hole for a 4.60" - 7" for a 6.6" dia.
2. Install a bead of ProSet Caulk around the coupling flange to waterproof.
3. Insert the insulation around the pipe through the sleeve and push around the wrap strip.
4. Fill void completely around the top of sleeve where necessary with ProSet fire rated Caulking to seal off.
5. Install a vertical riser support around the pipe on the top side of penetration
6. All above sizes are based on using black lettered ProSet sleeve pipe.

Note: Larger sizes up through 12" I.D. are available.



W.H. Directory Reference 00 Edition  
Firestop Device  
W.H. Design No. PS/PHV 180-01  
F Rating 3 Hrs.



**PROSET**<sup>®</sup>  
**SYSTEMS**  
FIRESTOP PENETRATOR™

DATE :  
1-10-06

DRG . NO .  
A-1014-di