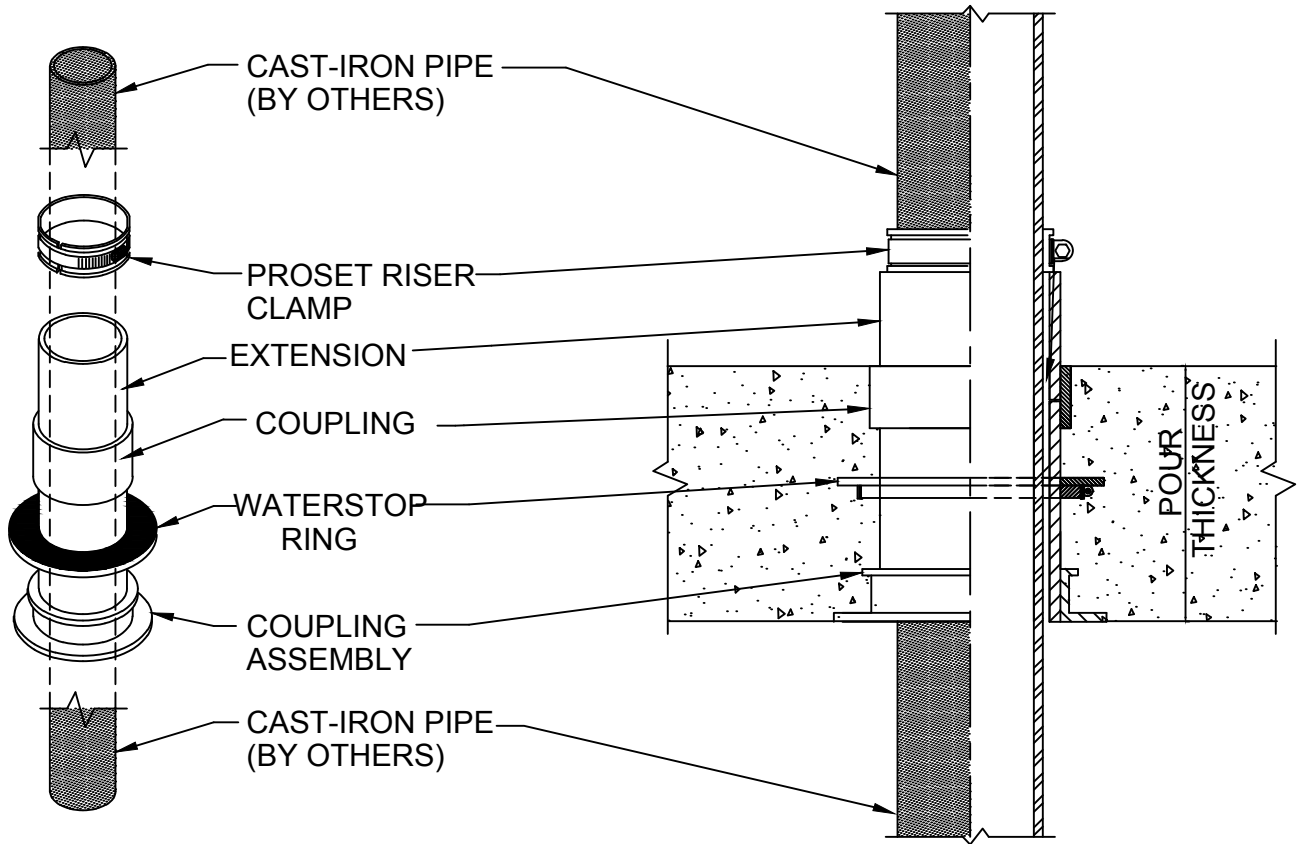


WATERPROOF C.I. PIPE- OPTION 4

CONCRETE ON WOOD FORM
FOR FLOORS OR WALLS



Use temporary caps on extensions when sealing off floors.

Size	Part No.	Description	Price	Unit Total
2"	P2543H-CR	2" Sleeve W / C & R	19.85	
2"	A02214-CI	2" Riser Clamp	2.95	
2"	P2G-43-3	2" X 3" Extension Piece	1.35	23.15
3"	P3543H-CR	3" Sleeve W / C & R	24.10	
3"	A03214-CI	3" Riser Clamp	3.30	
3"	P3G-43-3	3" X 3" Extension Piece	1.65	29.05
4"	P4543H-CR	4" Sleeve W / C & R	28.05	
4"	A04214-CI	4" Riser Clamp	4.15	
4"	P4G-43-3	4" X 3" Extension Piece	2.65	34.85
6"	P6543H-CR	6" Sleeve W / C & R	43.00	
6"	A06214-CI	6" Riser Clamp	6.75	
6"	P6B-43-3	6" X 3" Extension Piece	4.95	54.70



W.H. Directory Reference 97 Edition
Firestop Device
W.H. Design No. PS/PHV 180-01
F Rating 3 Hrs.



PROSET[®]
SYSTEMS
FIRESTOP PENETRATOR™

DATE :
08-01-18
DRG . NO .
B-4804-ACR