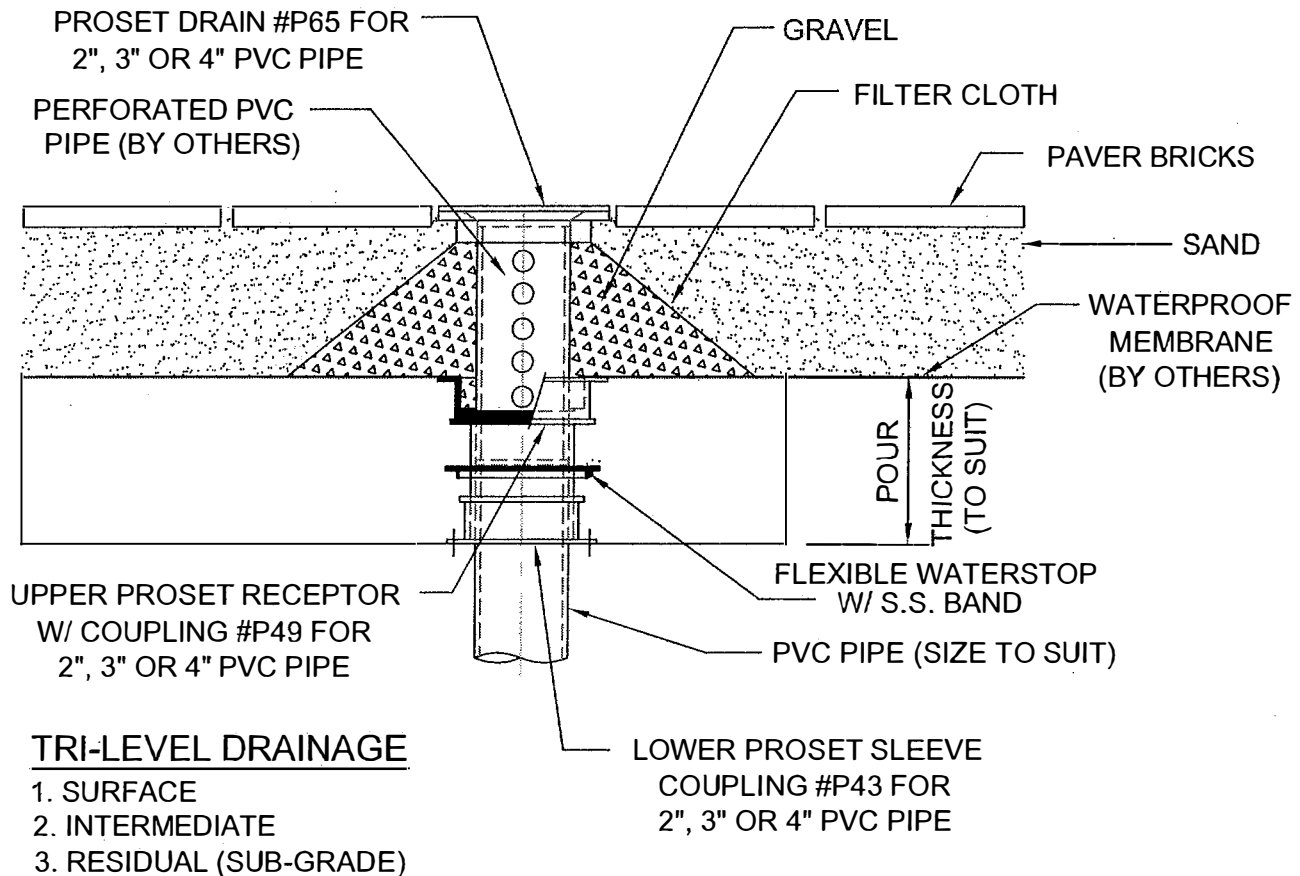


WATER PROOF DECK DRAIN SLEEVE ASSEMBLY

CONCRETE ON WOOD FORM



IMPORTANT NOTES :

1. To mount lower ProSet sleeve coupling, nail through flange holes to wood deck. Glue in the upper ProSet assembly with waterstop ring. Set top flange of upper receptor so that it will be flush with top of concrete.
2. Pour concrete slab for drainage area basin. After concrete has cured, remove covers from receptors.
3. Install the waterproof membrane over the concrete slab and bond to flange of upper receptor.
4. Install perforated PVC standpipe (and laterals if necessary) and install ProSet P65 drain.
5. Fill around the standpipe (and laterals) with gravel and then cover with filter cloth.
6. Backfill over filter cloth with sand to bring near proper grade elevation. Water down to settle.
7. Set paver bricks to the proper grade elevation then fill cracks with additional sand.
8. Water down the area to settle the sand and refill cracks with sand as necessary.
9. Repeat step #8 until proper finish and grade is achieved.

**SPECIALITY DRAINS FOR
OUTDOOR AREA DRAINAGE**



PROSET[®]
SYSTEMS
FIRESTOP PENETRATOR[™]

DATE:
5-31-21

DWG. #
C-6500-AR