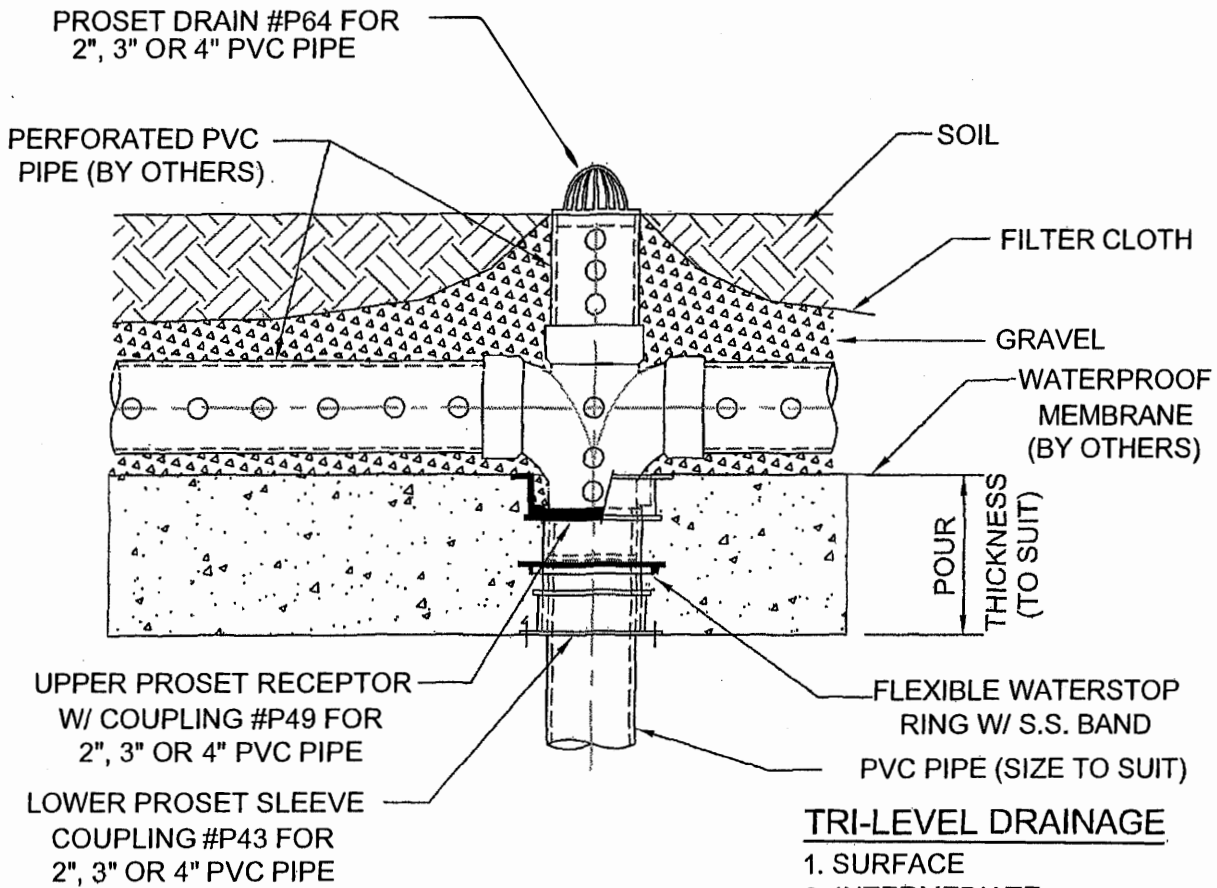


WATER PROOF PLANTER DRAIN SLEEVE ASSEMBLY

CONCRETE ON WOOD FORM



IMPORTANT NOTES:

1. To mount lower ProSet sleeve coupling, nail through flange holes to wood deck. Glue in upper ProSet assembly with waterstop ring. Set top flange of upper receptor so that it will be flush with top of concrete.
2. Pour concrete slab for drainage area basin. After concrete has cured, remove covers from receptors.
3. Install the waterproof membrane over the concrete slab and into the flange of upper receptor.
4. Install perforated PVC standpipe (laterals if necessary) and install ProSet P64 dome drain using pitch.
5. Fill around the standpipe (and laterals) with gravel and then cover with filter cloth.
6. Backfill over filter cloth with soil to bring to proper grade elevation. Water down to settle.

**SPECIALITY DRAINS FOR
OUTDOOR AREA DRAINAGE**



PROSET[®]
SYSTEMS
FIRESTOP PENETRATOR™

DATE:
5-31-21

DWG. #
C-6400-AR