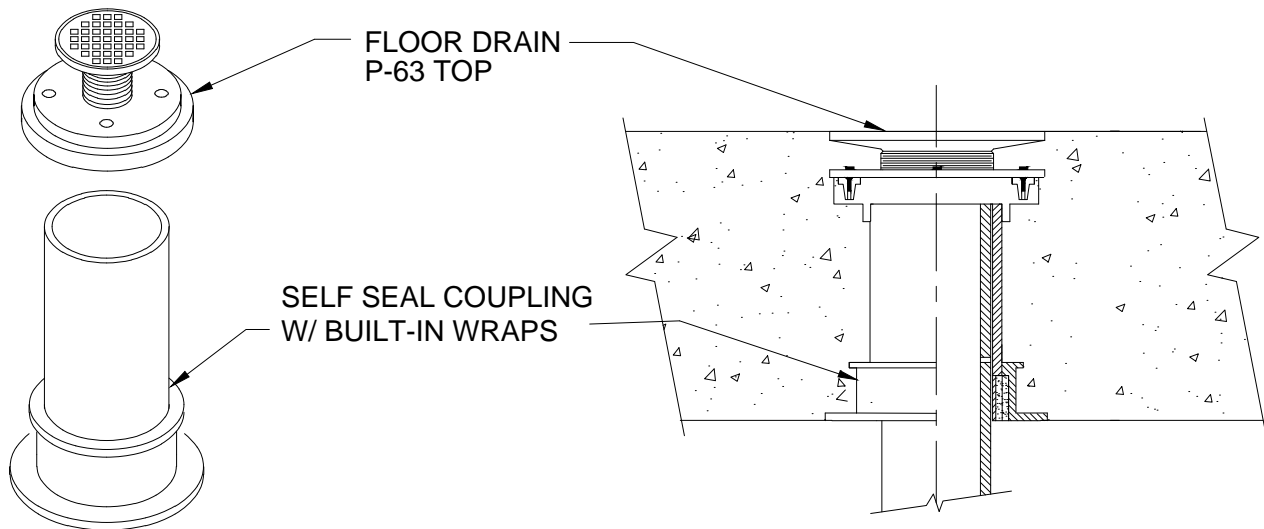


FLOOR DRAIN ASSEMBLY

CONCRETE ON WOOD FORM
FOR FLOORS



SEE COMPONENT DETAIL P-63 FOR STRAINER OPTIONS
USED FOR SHOWERS OR FLOOR DRAINS. WITH OPTIONAL TOPS

IMPORTANT NOTES :

1. Remove the clamping ring & strainer use duct tape over the top of shower base flange to protect during concrete pour. Note: Not required for adjustable top floor drain.
2. Use nails through the special fastening flange holes to mount the self-seal flange to deck.
3. Solvent cement the shower/floor drain top to the top of the drain stub.
4. After the concrete pour, connect plastic pipe and trap to the bottom of the drain stub and complete the installation.

ProSet clamping rings are available to fit any other manufacturers tailpiece and strainer tops.



W.H. Directory Reference 99 Edition
Firestop Device
W.H. Design No. PS/PH 120-07
F Rating 2 Hrs.



PROSET[®]
SYSTEMS
FIRESTOP PENETRATOR™

DATE :
5-31-21

DRG . NO .
C-6330-AF