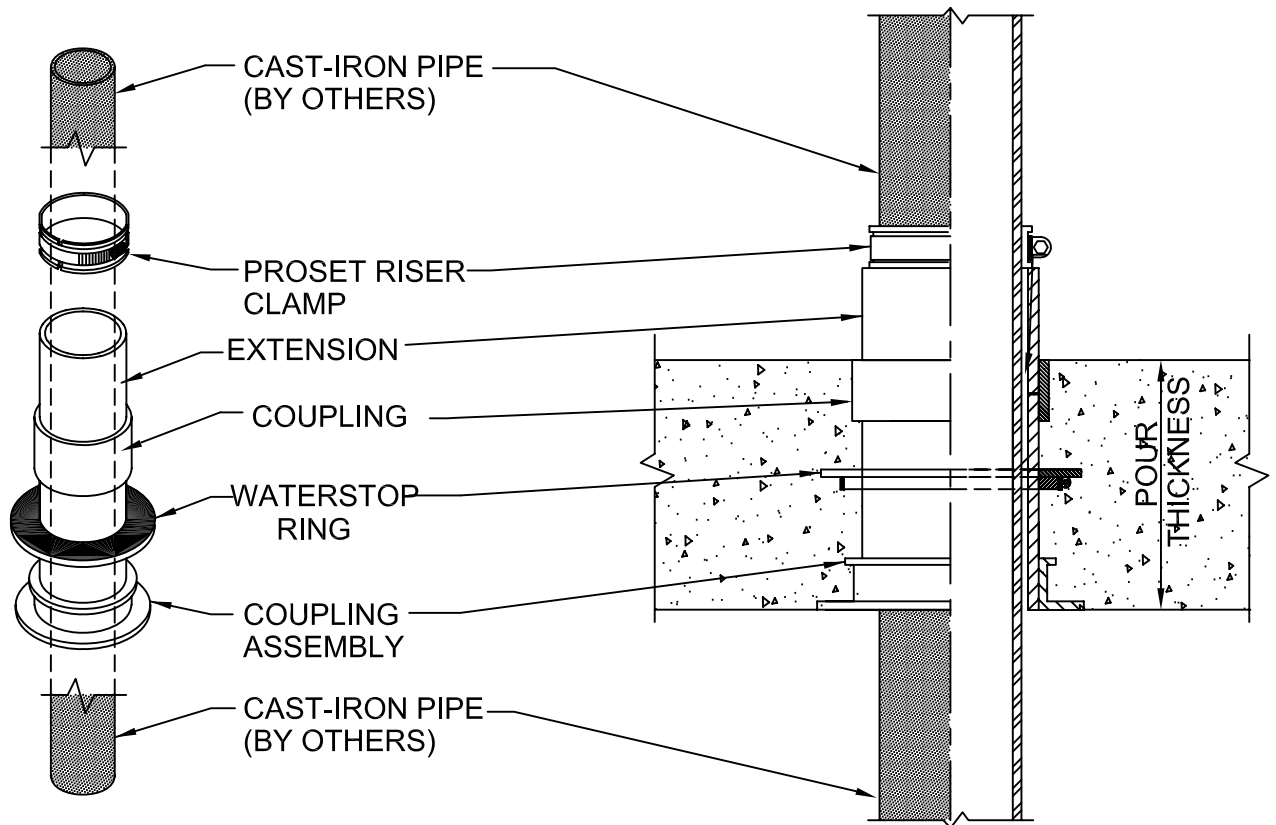


# WATERPROOF C.I. PIPE- OPTION 4

CONCRETE ON WOOD FORM  
FOR FLOORS OR WALLS



Use temporary caps on extensions when sealing off floors.

## IMPORTANT NOTES :

1. Use nails through flange holes to mount the flange to the deck.
2. Solvent cement the sleeve assembly with the Ring, Coupling & Cap into the flange.
3. After the concrete is poured, remove the protective cap that is flush with the concrete floor.
4. Solvent cement the sleeve extension into the coupling to raise the sleeve above the floor.
5. Install the cast iron pipe through the sleeve and the top extension.
6. Install the proper size ProSet Riser Clamp around the pipe onto the sleeve top then tighten clamp.

Option 4. Use when cast iron pipe passes completely through the penetration, such as rainwater drains.



W.H. Directory Reference 97 Edition  
Firestop Device  
W.H. Design No. PS/PHV 180-01  
F Rating 3 Hrs.



**PROSET**<sup>®</sup>  
**SYSTEMS**  
FIRESTOP PENETRATOR™

DATE :

1-10-06

DRG . NO .

B-4804-ACR