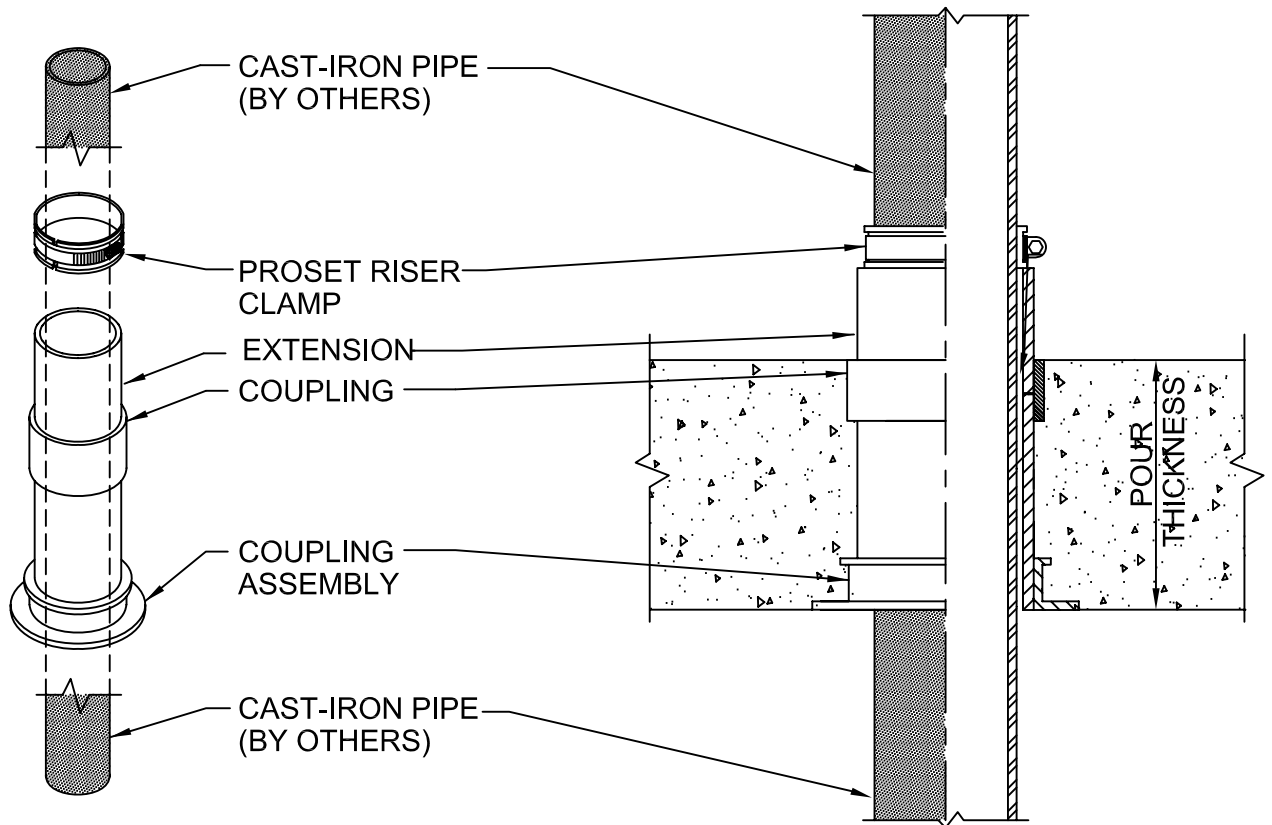


WATER RESISTANT C.I. PIPE - OPTION 4

CONCRETE ON WOOD FORM
FOR FLOORS OR WALLS



Use temporary caps on extensions when sealing off floors.

IMPORTANT NOTES :

1. Use nails through flange holes to mount the coupling to the deck.
2. After the concrete pour, remove protective cap that is flush with with concrete floor.
3. Solvent cement the sleeve extension into the coupling to raise the sleeve above the floor.
4. Install the pass through pipe through the sleeve and the top extension.
5. Install the proper size ProSet Riser Clamp around pipe onto the sleeve then tighten clamp.
6. Use regular no-hub couplings to connect the other cast iron piping.

Option 4. Use when cast iron pipe passes completely through the penetration, such as rainwater piping.



W.H. Directory Reference 97 Edition
Firestop Device
W.H. Design No. PS/PHV 180-01
F Rating 3 Hrs.



PROSET[®]
SYSTEMS
FIRESTOP PENETRATOR™

DATE :

1-10-06

DRG . NO .

B-4804-AC