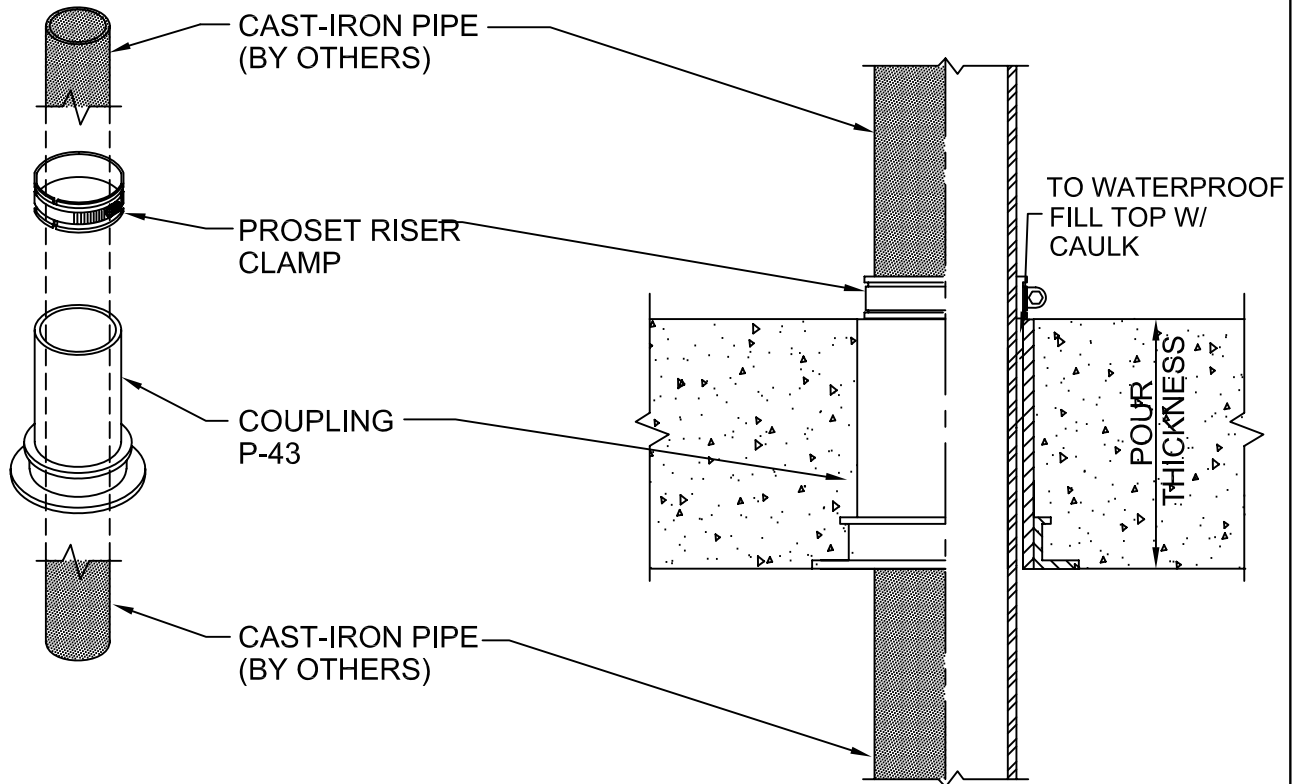


C.I. STACK STUB - OPTION 4

CONCRETE ON WOOD FORM
FOR FLOORS OR WALLS



IMPORTANT NOTES :

1. Use nails through flange holes to mount the coupling to the deck.
2. After the concrete pour, remove protective cap.
3. Insert regular no-hub pipe through the coupling.
4. Fill void at top with ProSet caulking to waterproof or see drawing B-4804-AC or ACR.
5. Install riser clamp around pipe to support and draft stop.
6. Use regular no-hub couplings to connect the other cast iron piping.

Option 4. Use when cast iron pipe passes completely through the penetration, such as rainwater piping. Must install a riser clamp. Caulk void to waterproof.



W.H. Directory Reference 97 Edition
Firestop Device
W.H. Design No. PS/PHV 180-01
F Rating 3 Hrs.



PROSET[®]
SYSTEMS
FIRESTOP PENETRATOR™

DATE :

1-10-06

DRG . NO .

B-4804-A