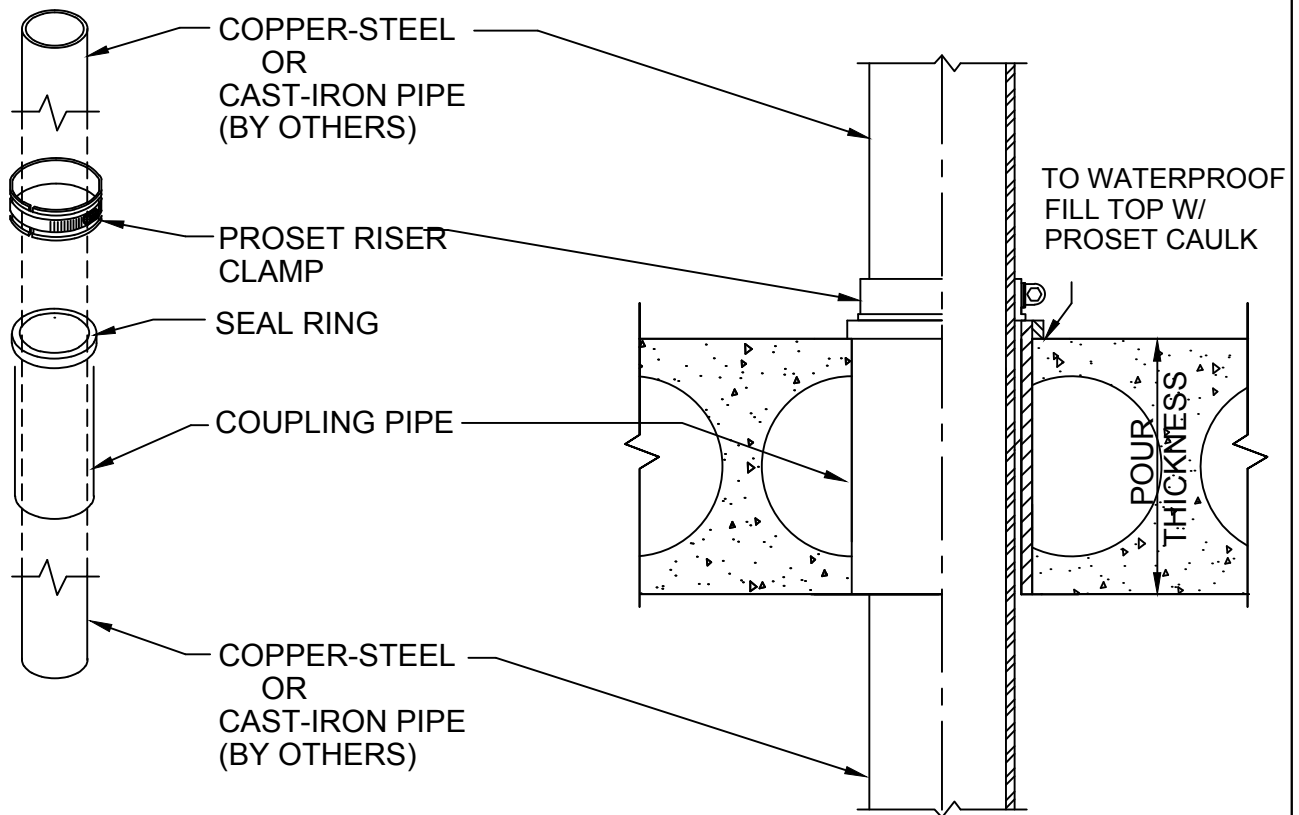


RISER CLAMP DEVICE

PRECAST CONCRETE OR EXISTING CONCRETE
FOR FLOORS OR WALLS



Size	Part No.	Description	Price	Unit Total	Core Size
2"	P2543H-B or G-CH A02214	2" Sleeve Coupling	4.95	8.20	2 3/4"
		2" Riser Clamp	3.25		
2½"	P3843H-CH A03212	2½" Sleeve Coupling	8.15	12.40	4"
		2½" Riser Clamp	4.25		
3"	P3543H-B or G-CH A03214	3" Sleeve Coupling	7.40	11.05	4"
		3" Riser Clamp	3.65		
4"	P4543H-B or G-CH A04214	4" Sleeve Coupling	10.15	14.75	5"
		4" Riser Clamp	4.60		
5"	P6843H A05214	5" Sleeve Coupling	24.90	32.20	7-1/2"
		5" Riser Clamp	7.30		
6"	P6543H-B A06214	6" Sleeve Coupling	16.85	24.30	7-1/2"
		6" Riser Clamp	7.45		

Use "B" Black letter sleeve pipe for cast iron, glass or steel or "G" Green for copper or plastic
Use suffix CU for copper -CI for cast iron -S for steel pipe when ordering Riser Clamps.



W.H. Directory Reference 97 Edition
Firestop Device
W.H. Design No. PS/PHV 180-01
F Rating 3 Hrs.



PROSET[®]
SYSTEMS
FIRESTOP PENETRATOR™

DATE :
07-14-23

DRG. NO.
A-1014-DHC