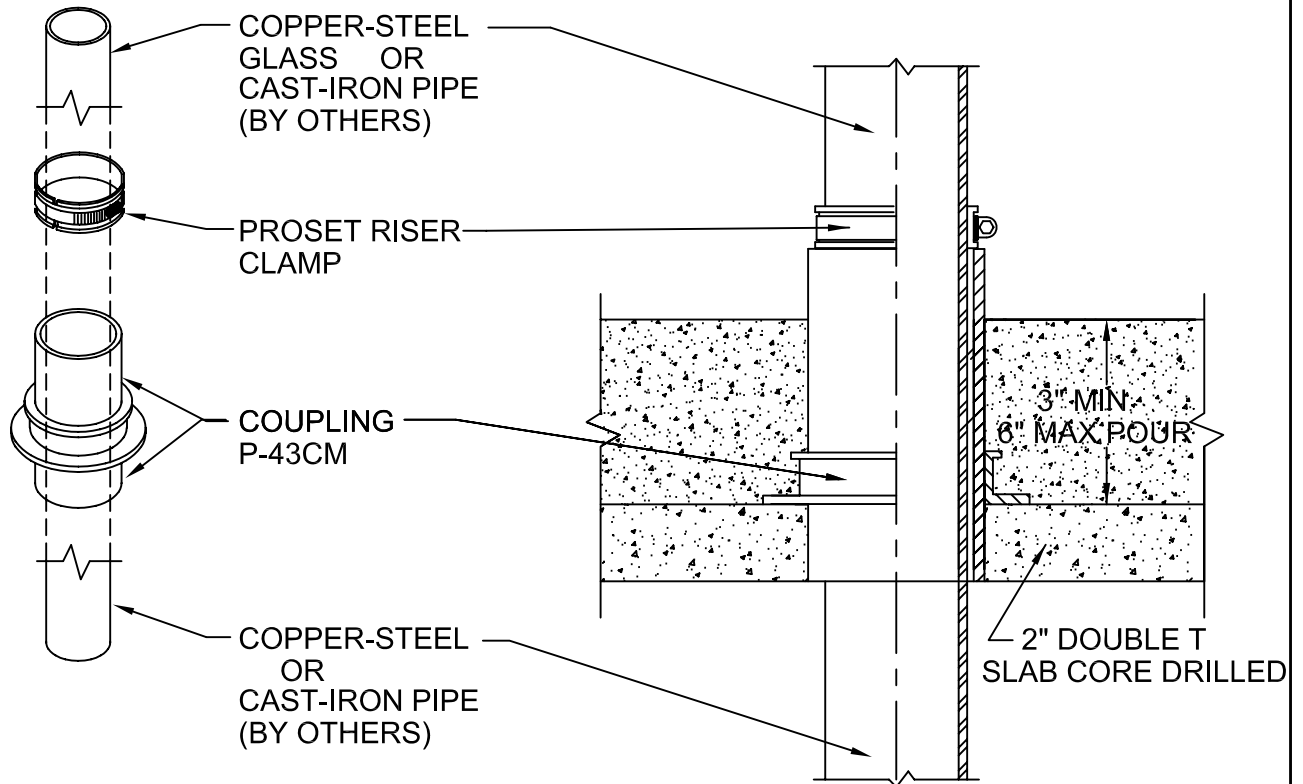


RISER CLAMP DEVICE

CONCRETE ON PRECAST CONCRETE DECK
FOR FLOORS



IMPORTANT NOTES :

1. Core hole through the deck to accommodate the coupling sleeve to the bottom of the pour.
2. Mount coupling to the precast deck through the predrilled holes with the sleeve extending up 1" above the second pour.
3. After the concrete pour, remove protective cap.
4. Insert the copper, c.i. or steel pipe through the coupling.
5. Install riser clamp around the pipe support and draft stop.
6. When ordering riser clamp - Use suffix CU for copper - CI for cast iron, glass or S for steel pipe.
7. Use Black letter Sleeve Pipe for steel/cast iron - Red letter pipe for copper.



W.H. Directory Reference 97 Edition
Firestop Device
W.H. Design No. PS/PHV 180-01
F Rating 3 Hrs.



PROSET[®]
SYSTEMS
FIRESTOP PENETRATOR™

DATE :
5-9-06

DRG . NO .
A-1014-CX