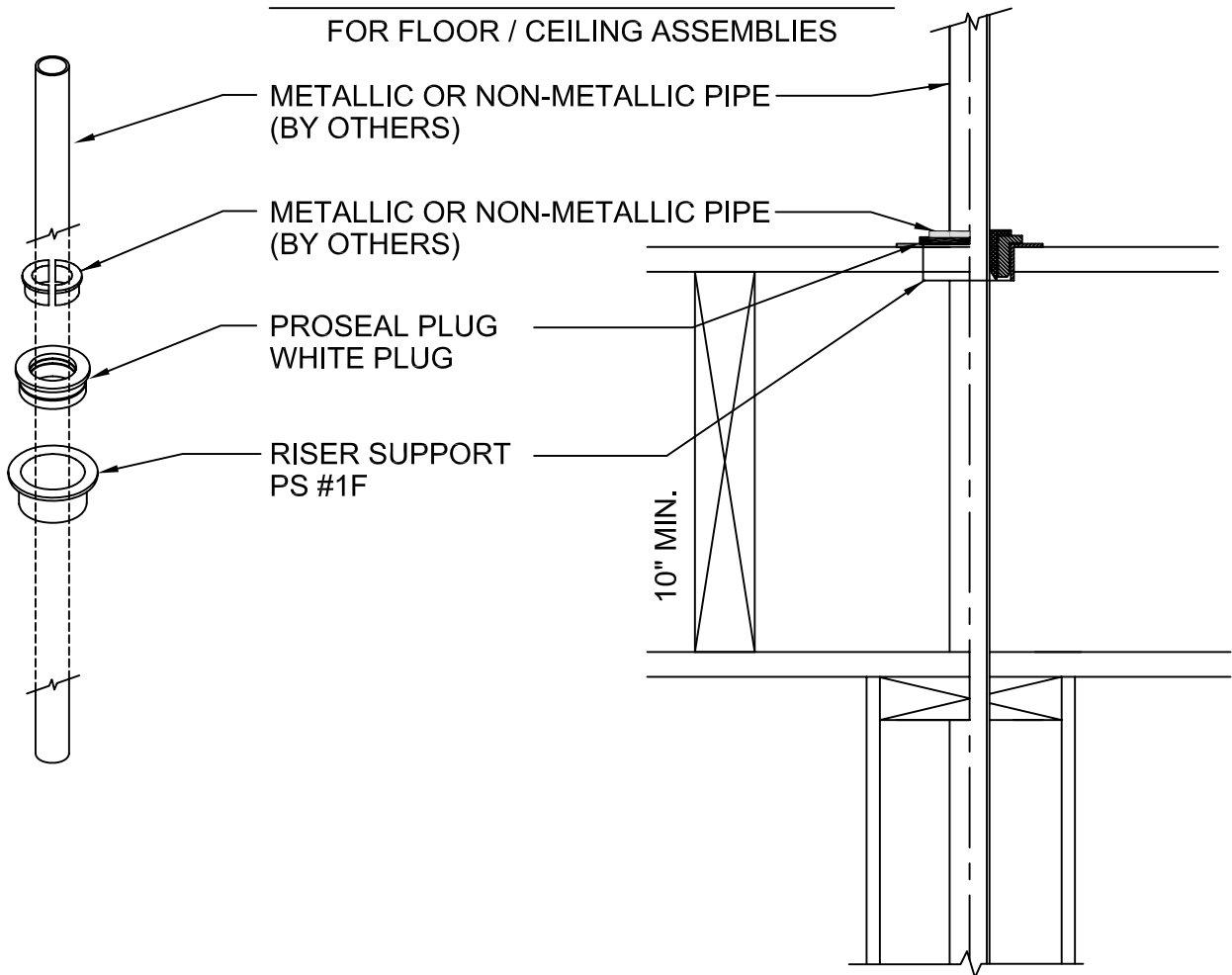


# PROSEAL PLUG DEVICE

FOR FLOOR / CEILING ASSEMBLIES



## IMPORTANT NOTES :

1. Drill a 3" hole through the floor to accommodate the Riser support fitting.
2. Drill the proper size hole through the lower plate to accommodate water pipe size.
3. Insert the Riser support into the hole and secure with nails or screws.
4. Insert the pass through pipe through the bottom plate and Riser support fitting.
5. Install the proper size split ProSeal Plug around the pipe and drive into the Riser support.

Important: Use ProSet's White ProSeal Plug when using CPVC pipe

For 1/2" through 1-1/2" Pipe .



W.H. Directory Reference 99 Edition  
Firestop Device  
W.H. Design No. PS/PH 120-05  
F Rating 1 hr or 2 Hrs.



**PROSET**<sup>®</sup>  
**SYSTEMS**  
FIRESTOP PENETRATOR™

DATE :  
1-10-06  
DRG . NO .  
A-1011-E