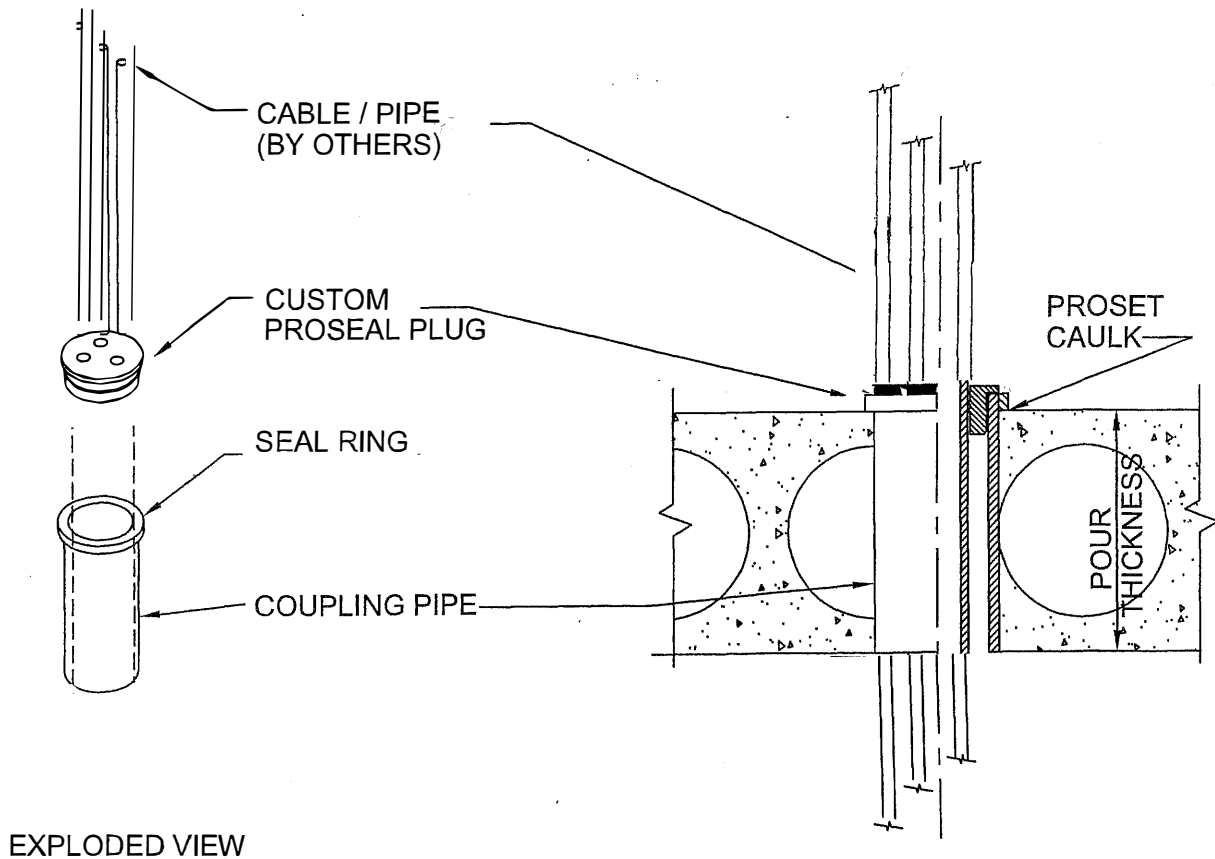


# PROSEAL PLUG SLEEVE ASSEMBLY

FOR PRECAST HOLLOW CORE FLOORS



EXPLODED VIEW

Size	Part No.	Description	Price	Unit Total
2"	P2543H-G-CH	Sleeve Coupling	4.95	
7/8"-3/8"	P23878	Refrigeration ProSeal	2.95	7.90
Multi-Hole	C20000	Blank ProSeal Plug	2.95	

Plug Drilled to accommodate various size openings: .75 per hole

Larger sizes through 6" are also available for multiple openings-See Component P-10.



W.H. Directory Reference 97 Edition  
Firestop Device  
W.H. Design No. PS/PHV 120-03  
F Rating 2 Hr. or 3 Hrs. or 4 Hrs.



**PROSET**<sup>®</sup>  
**SYSTEMS**  
FIRESTOP PENETRATOR™

DATE :

5-31-21

DRG. NO.

A1003-DHCp