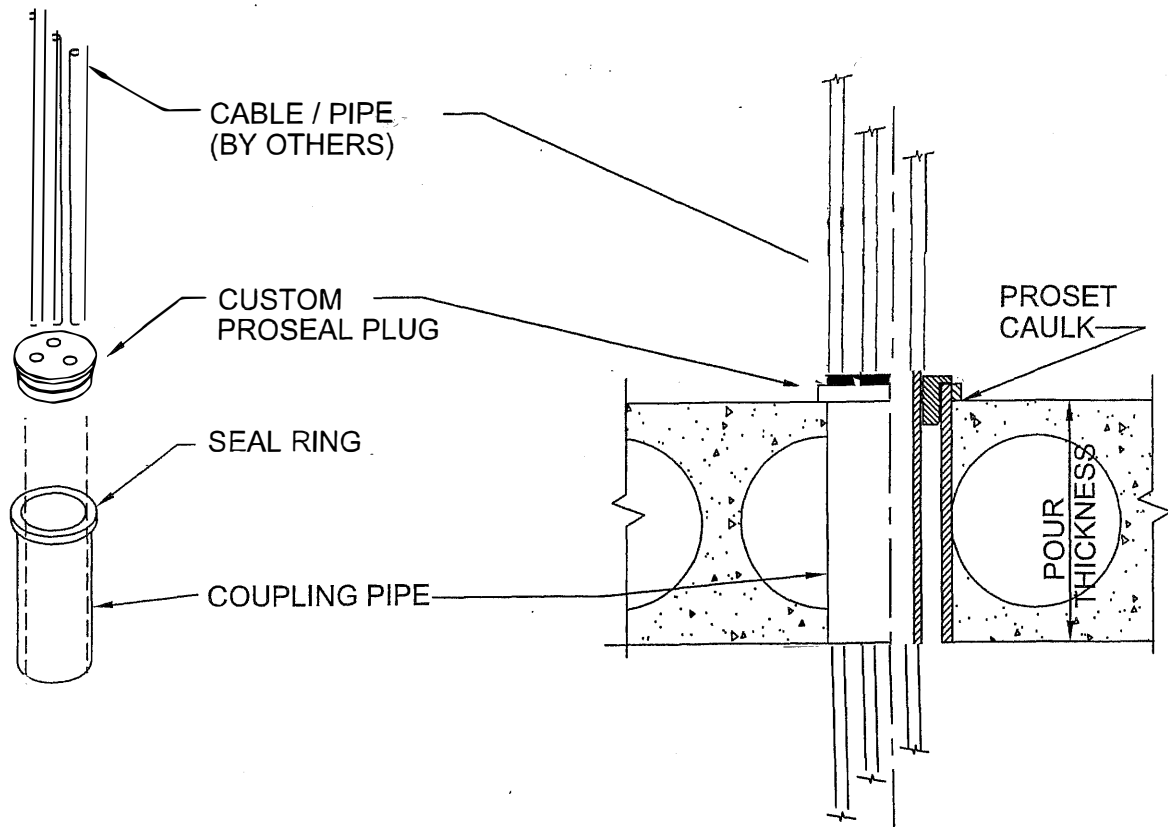


PROSEAL PLUG SLEEVE ASSEMBLY

FOR PRECAST HOLLOW CORE FLOORS



EXPLODED VIEW

IMPORTANT NOTES :

1. For 2" Coupling Pipe drill a 2 3/4" cored hole.
2. Install a bead of ProSet Caulk around the coupling flange to waterproof.
3. Insert pass through cable or pipe up through the sleeve coupling.
4. Install the custom drilled split ProSeal Plug around the pipe & drive into the sleeve coupling.



W.H. Directory Reference 97 Edition
Firestop Device
W.H. Design No. PS/PHV 120-03
F Rating 2 Hr. or 3 Hrs. or 4 Hrs.



PROSET[®]
SYSTEMS
FIRESTOP PENETRATOR™

DATE :

5-31-21

DRG. NO.

A-1003-DHC