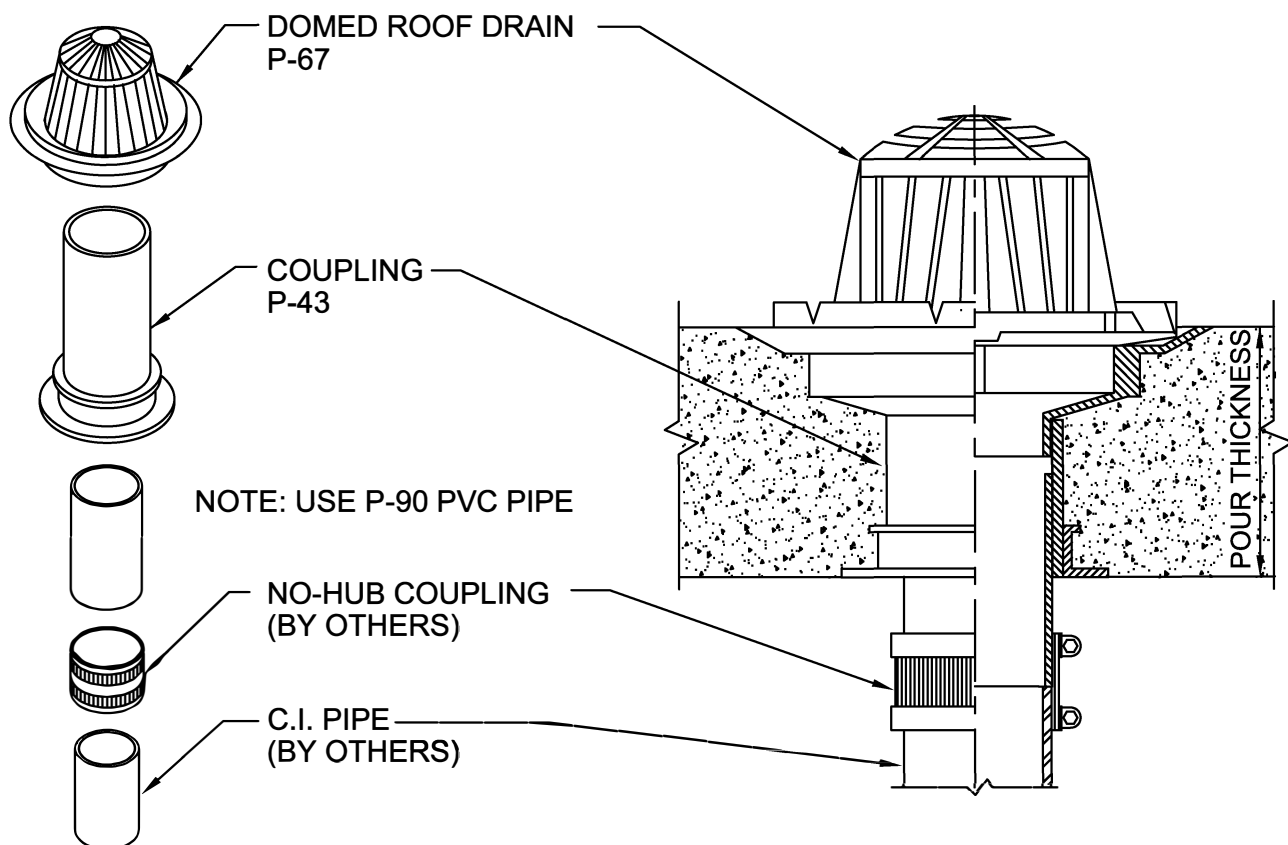


# ROOF DRAIN FITTING ASSEMBLY

CONCRETE ON WOOD FORM  
FOR FIRE RATED ROOF



SEE DRAWINGS B-6500-B,C OR D FOR INSTALLATION  
IN TUNNEL FORMS, METAL DECK OR EXISTING CONC.

## IMPORTANT NOTES :

1. Remove the dome & clamping ring use duct tape over the top roof drain flange to protect during concrete pour.
2. Use nails through the flange holes to mount the drain to deck.
3. After the concrete pour, insert & solvent weld the proper length P-90 pipe into the bottom of drain coupling.
4. Install the S-47 No-Hub adaptor coupling from the P-90 pipe to other cast iron pipe.
5. Install clamping ring to water proofing material - install the cast iron dome top.

Note : This assembly is only required when roof is fire rated, when rating is not required, the P-90 pipe can be omitted.



W.H. Directory Reference 99 Edition  
Firestop Device  
W.H. Design No. PS/PH 120-02  
F Rating 2 Hrs.



**PROSET**<sup>®</sup>  
**SYSTEMS**  
FIRESTOP PENETRATOR™

DATE :  
5-31-21

DRG. NO.  
B-6700-A  
B,C OR D