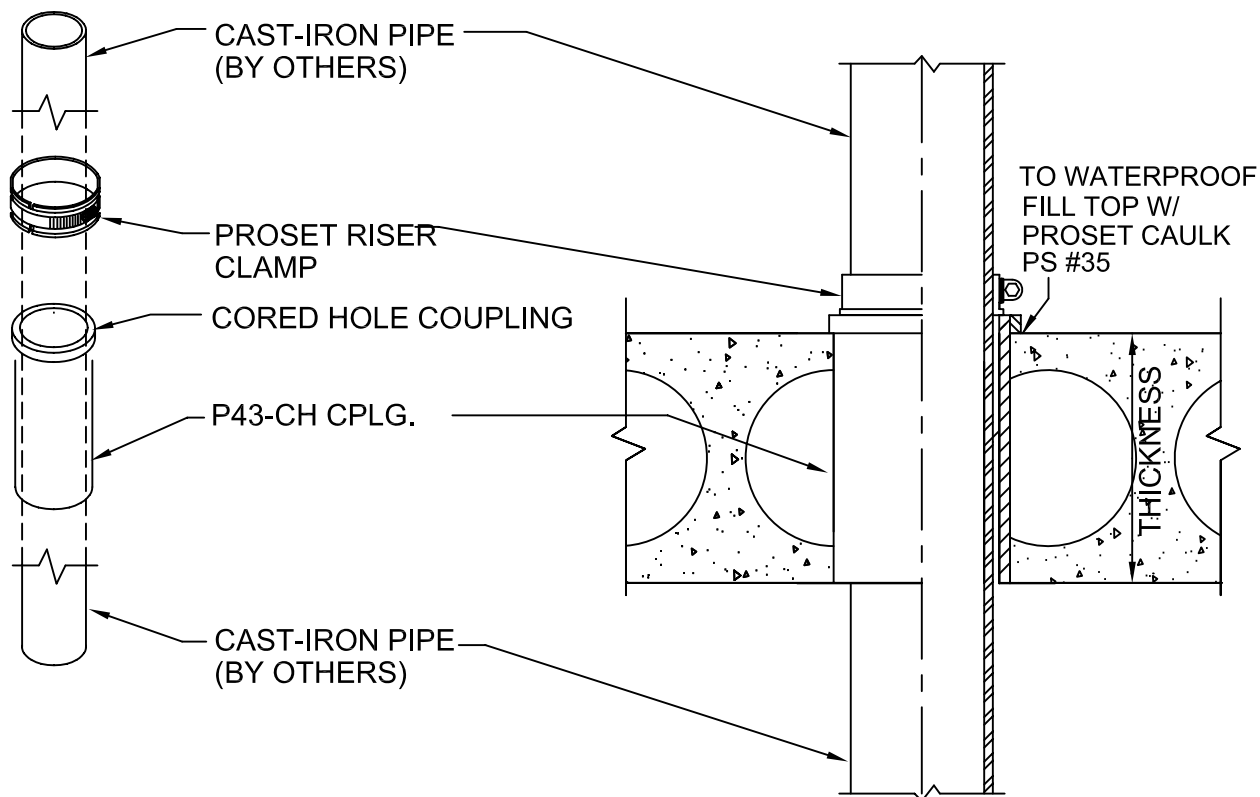


# C.I. STACK STUB - OPTION 4

PRECAST CONCRETE OR EXISTING CONCRETE  
FOR FLOORS OR WALLS



## IMPORTANT NOTES :

1. Core a 2 3/4" hole for 2" - 4" hole for 3" - 5" hole for 4" - 7-1/2" for 6".
2. Install a bead of ProSet Caulk around the coupling flange to waterproof.
3. Insert the cast iron pipe through the coupling.
4. Fill any void at top with ProSet Caulking to waterproof.
5. Install riser clamp around the pipe to support and draft stop. Clamp on both sides for walls.
6. When ordering riser clamp - Use suffix CI for cast iron pipe.
7. Use Black letter Sleeve Pipe for cast iron pipe.

Option 4. Use when cast iron pipe passes completely through the penetration, such as rainwater piping. Must install a ProSet Riser Clamp.



W.H. Directory Reference 97 Edition  
Firestop Device  
W.H. Design No. PS/PHV 180-01  
F Rating 3 Hrs.



**PROSET**<sup>®</sup>  
**SYSTEMS**  
FIRESTOP PENETRATOR™

DATE :  
1-10-08

DRG . NO .  
B-4804-DHC